

DOSSY

浙江丰登电气

接线端头及接头

DOSSY FITTING

TERMINALS & CONNECTORS

产品选型手册/Products Catalog



CE

SGS

RoHS



浙江丰登电气有限公司
Zhejiang Fengdeng Electric Limited

Brief Introduction

公司简介

浙江丰登电气有限公司创办于2005年，经过十几年的发展，已成为专业从事各类接线端子及接头的设计、开发和生产的综合型工贸一体化企业，为电力、通讯、机械、建筑、石油、化工、航空、交通、铁路运输、汽车制造、家用电器、机械、电气装置等各行业提供配套的高品质产品和优质服务。

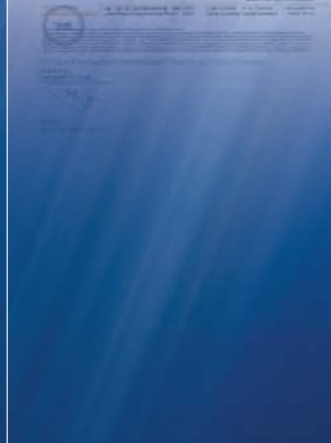
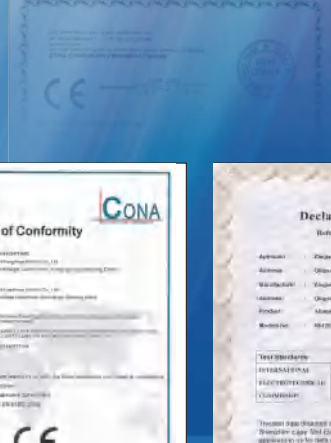
卓越品质源于对每个细节的精益求精，丰登电气拥有雄厚的技术力量、先进的生产工艺和完善的检测设备，一直秉承“卓越品质，超越客户需求”的理念，严格按照ISO9001国际标准的要求建立质量体系，应用于产品设计、制造和服务全过程的控制，已取得了中国质量认证中心颁发的ISO9001国际质量体系认证和CCC认证，产品已通过CE欧盟认证和符合ROHS标准的SGS环保认证，产品热销全国各地，并出口中东、东南亚、欧盟、美国、澳大利亚、南美等国家和地区。

丰登电气致力于提供“安全可靠、适用稳定”的电气产品，恪守“科技领先、质量第一、诚信经营、用户至上”的承诺，竭诚为国内外新老客户提供最优质、最真诚的服务。

Zhejiang Fengdeng Electric Limited. was founded in 2005 , after more than 10 years of development, it has become a comprehensive integration of industry and trade company, which engaged in design, development and production of various terminals and connectors professionally. Dossy electric provides the high-quality matched products and excellent services for various industries, such as electricity, communications, machinery, construction, petroleum, chemical, aviation, transportation, railway transportation, automobile manufacturing, household appliances, electrical installations etc.

The excellence of every detail is the root of excellent quality. DOSSY electric has strong technical force, the advanced technique of production and complete testing equipments. DOSSY electric has maintained "Excellent quality, Exceeding customer needs" business purposes. DOSSY electric has established quality system according to the ISO9001 international standards, which applied in the whole process control of the product design, manufacturing and service. DOSSY electric has obtained CCC Certification and the Quality Certification of ISO9001 international quality system which issued by the China Quality Certification Center. The products has passed EU CE Certification ,conform to the ROHS standards and SGS Environmental Protection Certification, which saled from coast to coast and exported in the Middle East, Southeast Asia, the European Union, the United States, Australia, South America and other countries and regions.

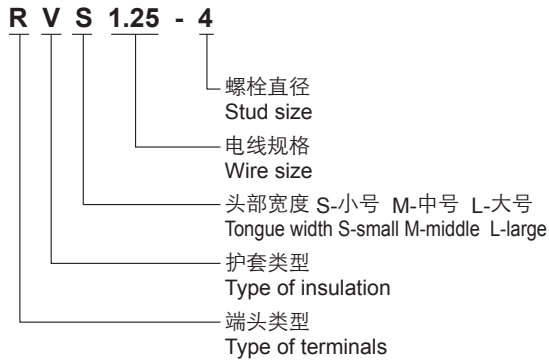
DOSSY electric is engaged in the supply of electrical products with the quality of "Safe, Reliable, Suitable and Steady", observes the commitment of "Leader in science and technology, Honest operation, Quality and Customer first", provides highest quality and the most sincere services for the new and old, domestic and foreign customers.



制造先进优质产品，提供专业一流服务

Manufacturing advanced high quality products,
Providing professional first class services

Terminal 端头类型说明 Category Introduction



说明1(Introduction 1)

R	圆形端头 Ring terminals
S	叉形端头 Spade terminals
H	钩形端头 Hook terminals
PT	针形端头 Pin terminals
FD	母接头 Female Disconnects
MD	公接头 Male Disconnects
FR	子弹形母接头 Female Receptacle Disconnects
MP	子弹形公接头 Male Bullet Disconnects
DB	片形端头 Blade terminals
LS	锁扣叉形端头 Locking Spade terminals
FS	凸形叉形端头 Flange Spade terminals
LB	凹片形端头 Lipped Blade terminals
BV	长形中间接头 Butt Connectors
FLD	旗形母接头 Flag Female Disconnects
FDF	母全绝端头 Female Disconnects Fully Ins
PVT	短形中间接头 Parallel Connectors
PBD	肩背形公、母接头 Piggy Back Disconnects

说明2(Introduction 2)

规格 Specification	对应尺寸 Size
110	0.110" (2.8mm)
187	0.187" (4.75mm)
205	0.205" (5.2mm)
250	0.250" (6.35mm)
312	0.312" (8.0mm)
375	0.375" (9.4mm)
156	0.156" (4mm)
176	0.176" (4.5mm)
195	0.195" (5mm)

说明3(Introduction 3)

电线规格 Wire size	电线使用范围 Wire range (mm ²)	美国线规 (A.W.G.)
1.25	0.5-1.5	22-16
2	1.5-2.5	16-14
3.5	2.5-4	14-12
5.5	4-6	12-10
8	6-10	8
14	10-16	6
22	16-25	4
38	25-35	2
60	50-70	1/0
70	70-95	2/0
80	95-120	3/0
100	120-150	4/0
150	150-185	250/300MCM
180	185-240	300/350MCM
200	240-300	400/500MCM
325	300-400	500/600MCM

说明4(Introduction 4)

螺栓直径 Stud size		螺栓通过口(孔)直径 Hole size(mm)
mm	Inch	
3	#4	3.2
3.5	#6	3.7
4	#8	4.3
5	#10	5.3
6	1/4	6.4
8	5/16	8.4
10	3/8	10.5
11	7/16	11.5
12	1/2	13.0
14	9/16	15.0
16	5/8	17.0
18	11/16	19.0
20	3/4	21.0
22	7/8	23.0
24	15/16	25.0





Products Center 产品总汇

TU-JTK 型叉型预绝缘端头
Insulated Spade Terminals



P1

TU 型叉形裸端头
Non-Insulated Spade Terminals



P2

TO-JTK 型圆形预绝缘端头
Insulated Ring Terminals



P3

TO 型圆形裸端头
Non-Insulated Ring Terminals



P4-P7

TZ-JTK 型针形预绝缘端头
Insulated Pin Terminals



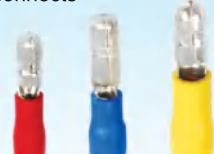
P8

TZ 型针形裸端头
Non-Insulated Pin Terminals



P8

子弹形公预绝缘接头
Insulated Bullet Male Disconnects



P9

子弹形母全绝缘接头
Insulated Bullet Female Disconnects



P9

公预绝缘接头
Insulated Male Disconnects



P10

母预绝缘接头
Insulated Female Disconnects



P10

TL-JTK 型短形全绝缘中间接头
Insulated Parallel Connectors



P11

TL-JTK 型长形全绝缘中间接头
Insulated Butt Connectors



P11

TL 型中间裸接头
Non-Insulated Butt Connectors



P11

母全绝缘接头
Fully Insulated Female Disconnects



P12

肩背形公母预绝缘接头
Insulated Piggy Back Disconnects



P12

片形预绝缘端头
Insulated Blade Terminals



P13

片形裸端头
Non-Insulated Blade Terminals



P13

TG-JT 型管形预绝缘端头
Insulated Cord End Terminals



P14

TG 型管形裸端头
Non-Insulated Cord End Terminals



P15-P16

双线管形预绝缘端头
Insulated Twin Cord End Terminals



P17

快速连接接头
Quick Splice Connectors



P17

凸缘叉形预绝缘端头
Insulated Flange Spade Terminals



P18

凹片形预绝缘端头
Insulated Lipped Blade Terminals



P18

锁扣叉形预绝缘端头
Insulated Locking Spade Terminals



P19

钩形预绝缘端头
Insulated Hook Terminals



P19

锁扣叉形裸端头
Non-Insulated Locking Spade Terminals



P20

钩形裸端头
Non-Insulated Hook Terminals



P20

螺旋式压线帽
Screw-On Wire Connectors



P21

闭端端子
Closed-End Wire Connectors



P21

长形全绝缘中间接头(尼龙)
Insulated Butt Connectors
(Nylon)



P21

旗形母绝缘接头(尼龙)
Insulated Flag Female Disconnects
(Nylon)



P22

公、母全绝缘接头(尼龙 N型)
Fully Insulated Male and Female
Disconnects (Nylon N Type)



P22

公、母全绝缘接头(尼龙 NY型)
Fully Insulated Male and Female
Disconnects (Nylon NY Type)



P23

子弹形公母全绝缘接头(尼龙)
Fully Insulated Bullet Male and
Female Disconnects (Nylon)



P23

绝缘软套管
Terminal Insulation



P24

C45 插针裸端头
C45 Insert Needle Naked
Terminals



P24

热缩防水中间接头
Heat Shrink Water Proof Butt
Connectors



P24

端子压线钳
Terminal Crimping Tools



P25

端子组套
Terminal Assortment Kits



P26-P27

JGK 型铜接线端头
Copper Connecting Terminals
(JGK Type)



P28

JGA 型铜接线端头
Copper Connecting Terminals
(JGA Type)



P28

JGY 型铜接线端头
Copper Connecting Terminals
(JGY Type)



P29

JGB 型铜接线端头
Copper Connecting Terminals
(JGB Type)



P29

DT 型铜接线端头
Copper Connecting Terminals
(DT Type)



P30

DL 型铝接线端头
Aluminium Connecting Terminals
(DL Type)



P30

DTL-1 型铜、铝接线端头
Copper Aluminium Connecting
Terminals (DTL-1 Type)



P31

DTL-2 型铜、铝接线端头
Copper Aluminium Connecting
Terminals (DTL-2 Type)



P31

AUS 型铜接线端头
Copper Connecting Terminals
(AUS Type)



P32

GTY 型铜接线管
Copper Connecting Tube
(GTY Type)



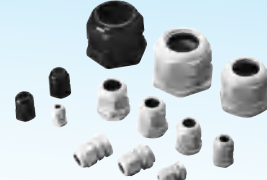
P32

接插件
Open Barrel Terminals



P33

电缆防水接头
Cable Glands



P34

接线端子
Terminal Blocks



P35

自锁式尼龙扎带
Self-Locking Nylon Cable Ties



P36

不锈钢扎带
Stainless Steel Cable Ties



P37

扎线固定座
Saddle Type Tie Mounts



P38

定位片
Tie Mounts



P38

膨胀管
Expand Nails



P38

圆形固定夹
Circle Fixing Clips



P39

方形固定夹
Square Fixing Clips



P39

R型固定夹
R Type Cable Clamps



P40

号码管
Cable Markers



P40

卷式保护带(缠绕管)
Spiral Wrapping Bands



P40

热缩管
Heat Shrink Tube



P41

SM/TSM 型绝缘子
Insulator (SM/TSM Type)



P42

尼龙圆形预绝缘端头(带铜套)
Nylon Insulated Ring Terminals
(With Copper Sleeve)



P43

热缩端头
Heat Shrink Terminals



P43

三路/四路连接接头
3 Ways/4 Ways Connecting
Disconnects



P43

镀金端头
Gold Plated Terminals



P43

TU-JTK 型叉型预绝缘端头 Insulated Spade Terminals

Material
Insulation: PVC
Terminal Body: Copper
Plating: Tin



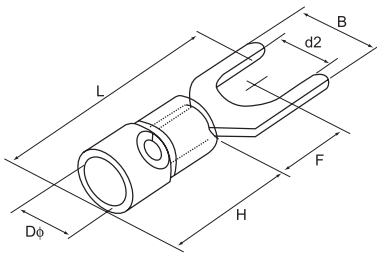
电线范围 Wire range: 0.5~1.5mm² (美国线规 A.W.G. 22~16) 最大电流: I_{max}=19A

型号规格 Item No	美制螺栓号 Stud size	尺寸Dimension(mm)						颜色 Color
		d2	B	L	F	H	Dφ	
SV1.25-3.2	#4	3.2	5.7	21.2	6.5	10.0	4.3	红色 Red
SVS1.25-3.5	#6	3.7	5.7	21.2	6.5			
SVL1.25-3.5	#6	3.7	6.4	21.2	6.5			
SVS1.25-4	#8	4.3	6.4	21.2	6.5			
SVM1.25-4	#8	4.3	7.2	21.2	6.5			
SVL1.25-4	#8	4.3	8.1	21.2	6.5			
SVS1.25-5	#10	5.3	8.1	21.2	6.5			
SVL1.25-5	#10	5.3	9.5	21.2	6.5			
SVS1.25-6	1/4	6.4	9.5	21.2	6.5			
SVL1.25-6	1/4	6.4	12.0	27.2	11.0			
SV1.25-8	5/16	8.4	14.0	29.0	12.5			



电线范围 Wire range: 1.5~2.5mm² (美国线规 A.W.G. 16~14) 最大电流: I_{max}=27A

型号规格 Item No	美制螺栓号 Stud size	尺寸Dimension(mm)						颜色 Color
		d2	B	L	F	H	Dφ	
SV2-3.2	#4	3.2	5.7	21.2	6.5	10.0	4.9	蓝色 Blue
SVS2-3.5	#6	3.7	5.7	21.2	6.5			
SVL2-3.5	#6	3.7	6.0	21.2	6.5			
SVS2-4	#8	4.3	6.4	21.2	6.5			
SVM2-4	#8	4.3	7.2	21.2	6.5			
SVL2-4	#8	4.3	8.1	21.2	6.5			
SVS2-5	#10	5.3	8.1	21.2	6.5			
SVL2-5	#10	5.3	9.5	21.2	6.5			
SVS2-6	1/4	6.4	9.5	21.2	6.5			
SVL2-6	1/4	6.4	12.0	27.2	11.0			
SV2-8	5/16	8.4	14.0	29.0	12.5			



电线范围 Wire range: 2.5~4mm² (美国线规 A.W.G. 14~12) 最大电流: I_{max}=37A

型号规格 Item No	美制螺栓号 Stud size	尺寸Dimension(mm)						颜色 Color
		d2	B	L	F	H	Dφ	
SV3.5-3	#4	3.2	5.7	24.8	7.0	13.0	6.2	黑色 Black
SV3.5-4	#8	4.3	8.0	24.8	7.0			
SV3.5-5	#10	5.3	8.0	24.8	7.0			
SV3.5-6	1/4	6.4	12.0	28.0	12.1			
SV3.5-8	5/16	8.4	12.0	33.7	13.7			

电线范围 Wire range: 4~6mm² (美国线规 A.W.G. 12~10) 最大电流: I_{max}=48A

型号规格 Item No	美制螺栓号 Stud size	尺寸Dimension(mm)						颜色 Color
		d2	B	L	F	H	Dφ	
SV5.5-3.5	#6	3.7	8.3	25.2	7.5	13.0	6.7	黄色 Yellow
SVS5.5-4	#8	4.3	8.3	25.2	7.5			
SVL5.5-4	#8	4.3	9.0	25.2	7.5			
SV5.5-5	#10	5.3	9.0	25.2	7.5			
SVS5.5-6	1/4	6.4	9.0	25.2	7.5			
SVL5.5-6	1/4	6.4	12.0	31.2	12.0			
SV5.5-8	5/16	8.4	14.0	30.0	11.5			

TU 型叉形裸端头 Non-Insulated Spade Terminals

Material
Terminal Body: Copper
Plating: Tin



电线范围 Wire range: 0.5~1.5mm² (美国线规 A.W.G. 22~16) 最大电流: I_{max}=19A

型号规格 Item No	美制螺栓号 Stud size	尺寸Dimension(mm)						
		d2	B	L	F	E	Dφ	dφ
SNB1.25-3.2	#4	3.2	5.7	16.0	6.5	4.8	3.4	1.7
SNBS1.25-3.5	#6	3.7	5.7	16.0	6.5			
SNBL1.25-3.5	#6	3.7	6.4	16.0	6.5			
SNBS1.25-4	#8	4.3	6.4	16.0	6.5			
SNBM1.25-4	#8	4.3	7.2	16.0	6.5			
SNBL1.25-4	#8	4.3	8.1	16.0	6.5			
SNBS1.25-5	#10	5.3	8.1	16.0	6.5			
SNBL1.25-5	#10	5.3	9.5	16.0	6.5			
SNBS1.25-6	1/4	6.4	9.5	16.0	6.5			
SNBL1.25-6	1/4	6.4	12.0	22.0	11.0			
SNB1.25-8	5/16	8.4	14.5	23.5	12.5			

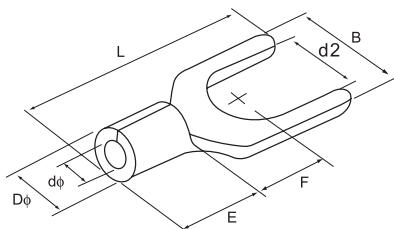


电线范围 Wire range: 1.5~2.5mm² (美国线规 A.W.G. 16~14) 最大电流: I_{max}=27A

型号规格 Item No	美制螺栓号 Stud size	尺寸Dimension(mm)						
		d2	B	L	F	E	Dφ	dφ
SNB2-3.2	#4	3.2	5.7	16.0	6.5	4.8	4.1	2.3
SNBS2-3.5	#6	3.7	5.7	16.0	6.5			
SNBL2-3.5	#6	3.7	6.0	16.0	6.5			
SNBS2-4	#8	4.3	6.4	16.0	6.5			
SNBM2-4	#8	4.3	7.2	16.0	6.5			
SNBL2-4	#8	4.3	8.1	16.0	6.5			
SNBS2-5	#10	5.3	8.1	16.0	6.5			
SNBL2-5	#10	5.3	9.5	16.0	6.5			
SNBS2-6	1/4	6.4	9.5	16.0	6.5			
SNBL2-6	1/4	6.4	12.0	22.0	11.0			
SNB2-8	5/16	8.4	14.5	23.5	12.5			

电线范围 Wire range: 2.5~4mm² (美国线规 A.W.G. 14~12) 最大电流: I_{max}=37A

型号规格 Item No	美制螺栓号 Stud size	尺寸Dimension(mm)						
		d2	B	L	F	E	Dφ	dφ
SNB3.5-3	#4	3.2	5.7	18.3	7.0	6.0	5.0	3.0
SNB3.5-4	#8	4.3	8.0	18.3	7.0			
SNB3.5-5	#10	5.3	8.0	18.3	7.0			
SNB3.5-6	1/4	6.4	12.0	21.5	12.1			



电线范围 Wire range: 4~6mm² (美国线规 A.W.G. 12~10) 最大电流: I_{max}=48A

型号规格 Item No	美制螺栓号 Stud size	尺寸Dimension(mm)						
		d2	B	L	F	E	Dφ	dφ
SNB5.5-3.5	#6	3.7	8.3	19.5	7.5	6.8	5.6	3.4
SNBS5.5-4	#8	4.3	8.3	19.5	7.5			
SNBL5.5-4	#8	4.3	9.0	19.5	7.5			
SNB5.5-5	#10	5.3	9.0	19.5	7.5			
SNB S5.5-6	1/4	6.4	9.0	19.5	7.5			
SNBL5.5-6	1/4	6.4	12.0	25.5	12.0			
SNB5.5-8	5/16	8.4	14.0	24.5	11.5			

电线范围 Wire range: 6~25mm² (美国线规 A.W.G. 8~4)

型号规格 Item No	美制螺栓号 Stud size	尺寸Dimension(mm)							最大电流 I _{max}
		d2	B	L	F	E	Dφ	dφ	
SNB8-4	#8	4.3	8.7	23.0	6.0	8.5	7.2	4.5	62A
SNB8-5	#10	5.3	12.0	24.5	5.7	8.5	7.2	4.5	62A
SNB8-6	1/4	6.4	12.0	24.5	5.7	8.5	7.2	4.5	62A
SNB8-8	5/16	8.4	14.5	28.0	8.3	8.5	7.2	4.5	62A
SNB14-6	1/4	6.4	12.0	28.0	7.5	10.5	9.0	5.8	88A
SNB14-8	5/16	8.4	14.0	28.0	7.5	10.5	9.0	5.8	88A
SNB22-8	5/16	8.4	14.0	34.5	9.0	12.0	11.5	7.7	115A

TO-JTK 型圆形预绝缘端头 Insulated Ring Terminals

Material
Insulation: PVC
Terminal Body: Copper
Plating: Tin



电线范围 Wire range: 0.5~1.5mm² (美国线规 A.W.G. 22~16) 最大电流: I_{max}=19A

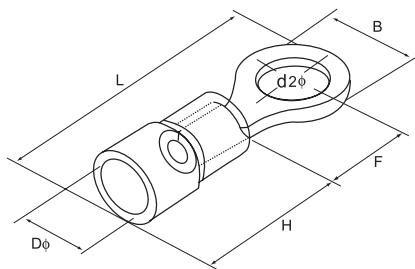
型号规格 Item No	美制螺栓号 Stud size	尺寸Dimension(mm)						颜色 Color
		d2	B	L	F	H	Dφ	
RV1.25-3.2	#4	3.2	5.7	17.8	4.95	10.0	4.3	红色 Red
RVS1.25-3.5	#6	3.7	5.7	17.8	4.95			
RVM1.25-3.5	#6	3.7	6.6	20.1	6.3			
RVL1.25-3.5	#6	3.7	8.0	21.5	7.0			
RVS1.25-4	#8	4.3	6.6	20.1	6.3			
RVL1.25-4	#8	4.3	8.0	21.5	7.0			
RVS1.25-5	#10	5.3	8.0	21.5	7.0			
RVL1.25-5	#10	5.3	9.8	23.0	8.5			
RVS1.25-6	1/4	6.4	9.8	23.0	8.5			
RV1.25-6	1/4	6.4	11.6	27.5	11.1			
RV1.25-8	5/16	8.4	11.6	27.5	11.1			
RV1.25-10	3/8	10.5	13.6	31.6	13.9			
RV1.25-12	1/2	13.0	19.2	36.0	16.5			



电线范围 Wire range: 1.5~2.5mm² (美国线规 A.W.G. 16~14) 最大电流: I_{max}=27A

型号规格 Item No	美制螺栓号 Stud size	尺寸Dimension(mm)						颜色 Color
		d2	B	L	F	H	Dφ	
RV2-3.2	#4	3.2	6.6	17.8	4.3	10.0	4.9	蓝色 Blue
RVS2-3.5	#6	3.7	6.6	17.8	4.3			
RVM2-3.5	#6	3.7	6.6	21.0	7.0			
RVL2-3.5	#6	3.7	8.5	22.5	7.75			
RVS2-4	#8	4.3	6.6	21.0	7.0			
RVL2-4	#8	4.3	8.5	22.5	7.75			
RVS2-5	#10	5.3	8.5	22.5	7.75			
RVL2-5	#10	5.3	9.5	22.5	7.25			
RV2-6	1/4	6.4	12.0	27.6	11.0			
RV2-8	5/16	8.4	12.0	27.6	11.0			
RV2-10	3/8	10.5	13.6	30.2	13.9			
RV2-12	1/2	13.0	19.2	36.5	16.5			

电线范围 Wire range: 2.5~4mm² (美国线规 A.W.G. 14~12) 最大电流: I_{max}=37A



型号规格 Item No	美制螺栓号 Stud size	尺寸Dimension(mm)						颜色 Color
		d2	B	L	F	H	Dφ	
RV3.5-4	#8	4.3	8.0	24.5	7.7	13.0	6.2	黑色 Black
RVS3.5-5	#10	5.3	8.0	24.5	7.7			
RVL3.5-5	#10	5.3	12.0	27.9	7.7			
RV3.5-6	1/4	6.4	12.0	27.9	7.7			
RV3.5-8	5/16	8.4	15.0	32.0	13.5			
RV3.5-10	3/8	10.5	15.0	32.0	13.5			

电线范围 Wire range: 4~6mm² (美国线规 A.W.G. 12~10) 最大电流: I_{max}=48A

型号规格 Item No	美制螺栓号 Stud size	尺寸Dimension(mm)						颜色 Color
		d2	B	L	F	H	Dφ	
RV5.5-3.5	#6	3.7	7.2	21.4	5.9	13.0	6.7	黄色 Yellow
RVS5.5-4	#8	4.3	7.2	21.4	5.9			
RVL5.5-4	#8	4.3	9.5	25.5	8.3			
RV5.5-5	#10	5.3	9.5	25.5	8.3			
RV5.5-6	1/4	6.4	12.0	31.5	13.0			
RV5.5-8	5/16	8.4	15.0	33.7	13.7			
RV5.5-10	3/8	10.5	15.0	33.7	13.7			
RV5.5-12	1/2	13.0	19.2	38.1	16.0			

TO 型圆形裸端头 Non-Insulated Ring Terminals

Material
Terminal Body: Copper
Plating: Tin



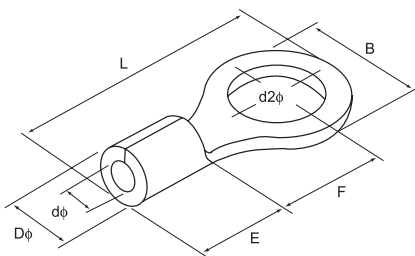
电线范围 Wire range: 0.5~1.5mm² (美国线规 A.W.G. 22~16) 最大电流: I_{max}=19A

型号规格 Item No	美制螺栓号 Stud size	尺寸Dimension(mm)						
		d2	B	L	F	E	Dφ	dφ
RNB1.25-3.2	#4	3.2	5.7	12.6	4.95	4.8	3.4	1.7
RNBS1.25-3.5	#6	3.7	5.7	12.6	4.95			
RNBM1.25-3.5	#6	3.7	6.6	14.4	6.3			
RNBL1.25-3.5	#6	3.7	8.0	15.8	7.0			
RNBS1.25-4	#8	4.3	6.6	14.4	6.3			
RNBL1.25-4	#8	4.3	8.0	15.8	7.0			
RNB1.25-5	#10	5.3	8.0	15.8	7.0			
RNBL1.25-5	#10	5.3	9.8	18.0	8.5			
RNBS1.25-6	1/4	6.4	9.8	18.0	8.5			
RNB1.25-6	1/4	6.4	11.6	21.8	11.1			
RNB1.25-8	5/16	8.4	11.6	21.8	11.1			
RNB1.25-10	3/8	10.5	13.6	25.5	13.9			
RNB1.25-12	1/2	13.0	19.2	31.0	16.5			

电线范围 Wire range: 1.5~2.5mm² (美国线规 A.W.G. 16~14) 最大电流: I_{max}=27A

型号规格 Item No	美制螺栓号 Stud size	尺寸Dimension(mm)						
		d2	B	L	F	E	Dφ	dφ
RNB2-3.2	#4	3.2	6.6	12.3	4.3	4.8	4.1	2.3
RNBS2-3.5	#6	3.7	6.6	12.3	4.3			
RNBM2-3.5	#6	3.7	6.6	16.0	7.0			
RNBL2-3.5	#6	3.7	8.5	16.8	7.75			
RNBS2-4	#8	4.3	6.6	16.0	7.0			
RNBL2-4	#8	4.3	8.5	16.8	7.75			
RNBS2-5	#10	5.3	8.5	16.8	7.75			
RNBL2-5	#10	5.3	9.5	16.8	7.25			
RNB2-6	1/4	6.4	12.0	21.8	11.0			
RNB2-8	5/16	8.4	12.0	21.8	11.0			
RNB2-10	3/8	10.5	13.6	25.5	13.9			
RNB2-12	1/2	13.0	19.2	31.0	16.5			

电线范围 Wire range: 2.5~4mm² (美国线规 A.W.G. 14~12) 最大电流: I_{max}=37A



型号规格 Item No	美制螺栓号 Stud size	尺寸Dimension(mm)						
		d2	B	L	F	E	Dφ	dφ
RNB3.5-4	#8	4.3	8.0	18.0	7.7	6.0	5.0	3.0
RNBS3.5-5	#10	5.3	8.0	18.0	7.7			
RNBL3.5-5	#10	5.3	12.0	21.4	7.7			
RNB3.5-6	1/4	6.4	12.0	21.4	7.7			
RNB3.5-8	5/16	8.4	15.0	27.0	13.5			
RNB3.5-10	3/8	10.5	15.0	27.0	13.5			

电线范围 Wire range: 4~6mm² (美国线规 A.W.G. 12~10) 最大电流: I_{max}=48A

型号规格 Item No	美制螺栓号 Stud size	尺寸Dimension(mm)						
		d2	B	L	F	E	Dφ	dφ
RNB5.5-3.5	#6	3.7	7.2	15.7	5.9	6.8	5.6	3.4
RNBS5.5-4	#8	4.3	7.2	15.7	5.9			
RNBL5.5-4	#8	4.3	9.5	19.8	8.3			
RNB5.5-5	#10	5.3	9.5	19.8	8.3			
RNB5.5-6	1/4	6.4	12.0	25.8	13.0			
RNB5.5-8	5/16	8.4	15.0	28.0	13.7			
RNB5.5-10	3/8	10.5	15.0	28.0	13.7			
RNB5.5-12	1/2	13.0	19.2	32.4	16.0			

TO 型圆形裸端头 Non-Insulated Ring Terminals

Material
Terminal Body: Copper
Plating: Tin



电线范围 Wire range: 6~10mm² (美国线规 A.W.G. 8) 最大电流: I_{max}=62A

型号规格 Item No	美制螺栓号 Stud size	尺寸Dimension(mm)						
		d2	B	L	F	E	Dφ	dφ
RNB8-4	#8	4.3	8.8	23.8	9.3	8.5	7.2	4.5
RNBS8-5	#10	5.3	8.8	23.8	11.1			
RNBM8-5	#10	5.3	12.0	23.8	9.3			
RNBL8-5	#10	5.3	15.0	29.8	13.8			
RNBS8-6	1/4	6.4	12.0	23.8	9.3			
RNBL8-6	1/4	6.4	15.0	29.8	13.8			
RNB8-8	5/16	8.4	15.0	29.8	13.8			
RNB8-10	3/8	10.5	15.0	29.8	13.8			
RNB8-12	1/2	13.0	20.0	33.5	15.0			

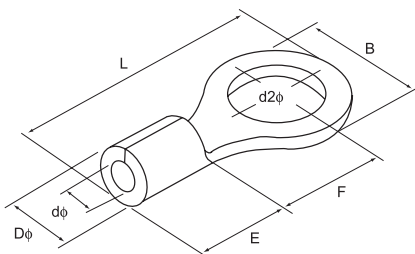


电线范围 Wire range: 10~16mm² (美国线规 A.W.G. 6) 最大电流: I_{max}=88A

型号规格 Item No	美制螺栓号 Stud size	尺寸Dimension(mm)									
		d2	B	L	F	E	Dφ	dφ			
RNB14-4	#8	4.3	12.0	29.8	13.3	10.5	9.0	5.8			
RNB14-5	#10	5.3	12.0	29.8	13.3						
RNBS14-6	1/4	6.4	12.0	29.8	13.3						
RNBL14-6	1/4	6.4	16.0	32.8	13.3						
RNB14-8	5/16	8.4	16.0	32.8	14.5						
RNB14-10	3/8	10.5	16.0	32.8	14.5						
RNB14-12	1/2	13.0	22.0	41.0	19.5						

电线范围 Wire range: 16~25mm² (美国线规 A.W.G. 4) 最大电流: I_{max}=115A

型号规格 Item No	美制螺栓号 Stud size	尺寸Dimension(mm)						
		d2	B	L	F	E	Dφ	dφ
RNBS22-5	#10	5.3	12.2	33.2	14.5	12.0	11.5	7.7
RNBL22-5	#10	5.3	16.5	33.7	13.5			
RNBS22-6	1/4	6.4	12.2	33.2	14.5			
RNBL22-6	1/4	6.4	16.5	33.7	13.5			
RNB22-8	5/16	8.4	16.5	33.7	13.5			
RNB22-10	3/8	10.5	16.5	33.7	13.5			
RNB22-11	7/16	11.5	22.0	42.5	19.5			
RNB22-12	1/2	13.0	22.0	42.5	19.5			



电线范围 Wire range: 25~35mm² (美国线规 A.W.G. 2) 最大电流: I_{max}=160A

型号规格 Item No	美制螺栓号 Stud size	尺寸Dimension(mm)						
		d2	B	L	F	E	Dφ	dφ
RNB38-5	#10	5.3	15.3	39.0	18.3	14.0	13.3	9.4
RNB38-6	1/4	6.4	15.3	39.0	18.3			
RNBS38-8	5/16	8.4	15.3	39.0	18.3			
RNBL38-8	5/16	8.4	22.0	42.7	17.7			
RNBS38-10	3/8	10.5	15.3	39.0	18.3			
RNBL38-10	3/8	10.5	22.0	42.7	17.7			
RNB38-11	7/16	11.5	22.0	42.7	17.7			
RNB38-12	1/2	13.0	22.0	42.7	17.7			

TO型圆形裸端头 Non-Insulated Ring Terminals

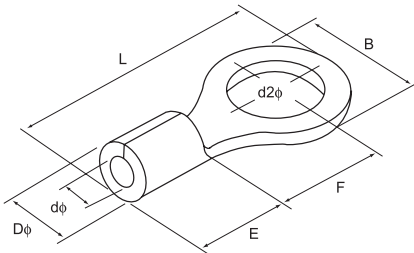
Material
Terminal Body: Copper
Plating: Tin



电线范围 Wire range: 35~50mm² (美国线规 A.W.G. 1/0) 最大电流: I_{max}=215A

型号规格 Item No	美制螺栓号 Stud size	尺寸Dimension(mm)						
		d2	B	L	F	E	Dφ	dφ
RNB60-6	1/4	6.4	22.0	49.7	20.7	18.0	15.4	11.4
RNB60-8	5/16	8.4						
RNB60-10	3/8	10.5						
RNB60-11	7/16	11.5						
RNB60-12	1/2	13.0						
RNB60-14	9/16	15.0	32.0	57.5	23.5	18.0	15.4	11.4
RNB60-16	5/8	17.0						
RNB60-18	11/16	19.0						
RNB60-20	3/4	21.0						
RNB60-22	7/8	23.0						

电线范围 Wire range: 50~70mm² (美国线规 A.W.G. 2/0) 最大电流: I_{max}=235A



型号规格 Item No	美制螺栓号 Stud size	尺寸Dimension(mm)						
		d2	B	L	F	E	Dφ	dφ
RNB70-6	1/4	6.4	24.0	51.0	20.0	19.0	17.5	13.3
RNB70-8	5/16	8.4						
RNB70-10	3/8	10.5						
RNB70-11	7/16	11.5						
RNB70-12	1/2	13.0						
RNB70-14	9/16	15.0	32.0	61.0	26.0	19.0	17.5	13.3
RNB70-16	5/8	17.0						
RNB70-18	11/16	19.0						
RNB70-20	3/4	21.0						
RNB70-22	7/8	23.0						

电线范围 Wire range: 70~95mm² (美国线规 A.W.G. 3/0) 最大电流: I_{max}=255A

型号规格 Item No	美制螺栓号 Stud size	尺寸Dimension(mm)						
		d2	B	L	F	E	Dφ	dφ
RNB80-6	1/4	6.4	27.0	54.2	20.7	20.0	19.5	14.5
RNB80-8	5/16	8.4						
RNB80-10	3/8	10.5						
RNB80-11	7/16	11.5						
RNB80-12	1/2	13.0						
RNB80-14	9/16	15.0	32.0	68.0	32.0	20.0	19.5	14.5
RNB80-16	5/8	17.0						
RNB80-18	11/16	19.0						
RNB80-20	3/4	21.0						
RNB80-22	7/8	23.0						

电线范围 Wire range: 95~120mm² (美国线规 A.W.G. 4/0) 最大电流: I_{max}=300A

型号规格 Item No	美制螺栓号 Stud size	尺寸Dimension(mm)						
		d2	B	L	F	E	Dφ	dφ
RNB100-6	1/4	6.4	28.5	55.6	20.4	21.0	22.1	16.4
RNB100-8	5/16	8.4						
RNB100-10	3/8	10.5						
RNB100-11	7/16	11.5						
RNB100-12	1/2	13.0						
RNB100-14	9/16	15.0	32.0	69.0	32.0	21.0	22.1	16.4
RNB100-16	5/8	17.0						
RNB100-18	11/16	19.0						
RNB100-20	3/4	21.0						
RNB100-22	7/8	23.0						

TO 型圆形裸端头 Non-Insulated Ring Terminals

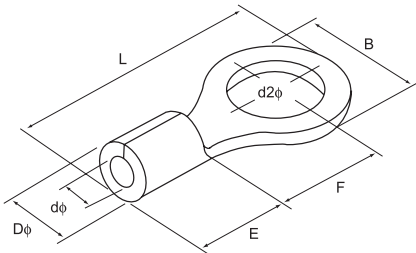
Material
Terminal Body: Copper
Plating: Tin



电线范围 Wire range: 120~150mm² (美国线规 A.W.G. 250/300MCM) 最大电流: I_{max}=395A

型号规格 Item No	美制螺栓号 Stud size	尺寸Dimension(mm)						
		d2	B	L	F	E	Dφ	dφ
RNB150-8	5/16	8.4	36.0	66.0	23.0	27.0	26.6	19.5
RNB150-10	3/8	10.5						
RNB150-11	7/16	11.5						
RNB150-12	1/2	13.0						
RNB150-14	9/16	15.0						
RNB150-16	5/8	17.0	36.0	81.0	36.0	27.0	26.6	19.5
RNB150-18	11/16	19.0						
RNB150-20	3/4	21.0						
RNB150-22	7/8	23.0						
RNB150-24	15/16	25.0						
RNB150-27	1	28.0						

电线范围 Wire range: 150~185mm² (美国线规 A.W.G. 300/350MCM) 最大电流: I_{max}=440A



型号规格 Item No	美制螺栓号 Stud size	尺寸Dimension(mm)						
		d2	B	L	F	E	Dφ	dφ
RNB180-8	5/16	8.4	38.5	69.0	24.5	28.5	28.6	21.0
RNB180-10	3/8	10.5						
RNB180-11	7/16	11.5						
RNB180-12	1/2	13.0						
RNB180-14	9/16	15.0						
RNB180-16	5/8	17.0	38.5	86.6	39.0	28.5	28.6	21.0
RNB180-18	11/16	19.0						
RNB180-20	3/4	21.0						
RNB180-22	7/8	23.0						
RNB180-24	15/16	25.0						
RNB180-27	1	28.0						

电线范围 Wire range: 185~240mm² (美国线规 A.W.G. 400/500MCM) 最大电流: I_{max}=470A

型号规格 Item No	美制螺栓号 Stud size	尺寸Dimension(mm)						
		d2	B	L	F	E	Dφ	dφ
RNB200-8	5/16	8.4	44.0	72.0	24.5	31.5	32.6	24.0
RNB200-10	3/8	10.5						
RNB200-11	7/16	11.5						
RNB200-12	1/2	13.0						
RNB200-14	9/16	15.0						
RNB200-16	5/8	17.0	44.0	91.1	37.5	31.5	32.6	24.0
RNB200-18	11/16	19.0						
RNB200-20	3/4	21.0						
RNB200-22	7/8	23.0						
RNB200-24	15/16	25.0						
RNB200-27	1	28.0						

电线范围 Wire range: 300~400mm² (美国线规 A.W.G. 500/600MCM) 最大电流: I_{max}=650A

型号规格 Item No	美制螺栓号 Stud size	尺寸Dimension(mm)						
		d2	B	L	F	E	Dφ	dφ
RNB325-8	5/16	8.4	50.0	88.0	33.5	35.5	37.1	28.0
RNB325-10	3/8	10.5						
RNB325-11	7/16	11.5						
RNB325-12	1/2	13.0						
RNB325-14	9/16	15.0						
RNB325-16	5/8	17.0	50.5	105.7	45.0	35.5	37.1	28.0
RNB325-18	11/16	19.0						
RNB325-20	3/4	21.0						
RNB325-22	7/8	23.0						
RNB325-24	15/16	25.0						
RNB325-27	1	28.0						

TZ-JTK 型针形预绝缘端头 Insulated Pin Terminals

Material
Insulation: PVC
Terminal Body: Copper
Plating: Tin



电线范围 Wire range: 0.5~1.5mm² (美国线规 A.W.G. 22~16) 最大电流: I_{max}=19A

型号规格 Item No	尺寸Dimension(mm)				颜色 Color
	F	L	H	Dφ	
PTV1.25-9	1.9	19.0	10.0	4.3	红色 Red
PTV1.25-10	1.9	20.0			
PTV1.25-12	1.9	22.0			
PTV1.25-13	1.9	23.0			
PTV1.25-18	1.9	28.0			

电线范围 Wire range: 1.5~2.5mm² (美国线规 A.W.G. 16~14) 最大电流: I_{max}=27A

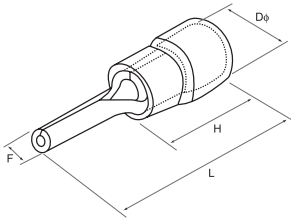
型号规格 Item No	尺寸Dimension(mm)				颜色 Color
	F	L	H	Dφ	
PTV2-9	1.9	19.0	10.0	4.9	蓝色 Blue
PTV2-10	1.9	20.0			
PTV2-12	1.9	22.0			
PTV2-13	1.9	23.0			
PTV2-18	1.9	28.0			

电线范围 Wire range: 2.5~4mm² (美国线规 A.W.G. 14~12) 最大电流: I_{max}=37A

型号规格 Item No	尺寸Dimension(mm)				颜色 Color
	F	L	H	Dφ	
PTV3.5-10	2.8	20.0	13.0	6.2	黑色 Black
PTV3.5-13	2.8	25.5			

电线范围 Wire range: 4~6mm² (美国线规 A.W.G. 12~10) 最大电流: I_{max}=48A

型号规格 Item No	尺寸Dimension(mm)				颜色 Color
	F	L	H	Dφ	
PTV5.5-13	2.8	25.5	13.0	6.7	黄色 Yellow



TZ 型针形裸端头 Non-Insulated Pin Terminals

Material
Terminal Body: Copper
Plating: Tin



电线范围 Wire range: 0.5~1.5mm² (美国线规 A.W.G. 22~16) 最大电流: I_{max}=19A

型号规格 Item No	尺寸Dimension(mm)				
	F	L	H	Dφ	dφ
PTN1.25-9	1.9	13.8	4.8	3.4	1.7
PTN1.25-10	1.9	14.8			
PTN1.25-12	1.9	16.8			
PTN1.25-13	1.9	17.8			
PTN1.25-18	1.9	22.8			

电线范围 Wire range: 1.5~2.5mm² (美国线规 A.W.G. 16~14) 最大电流: I_{max}=27A

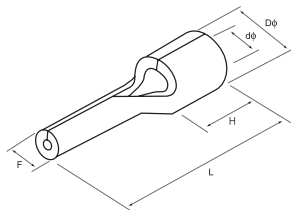
型号规格 Item No	尺寸Dimension(mm)				
	F	L	H	Dφ	dφ
PTN2-9	1.9	13.8	4.8	4.1	2.3
PTN2-10	1.9	14.8			
PTN2-12	1.9	16.8			
PTN2-13	1.9	17.8			
PTN2-18	1.9	22.8			

电线范围 Wire range: 2.5~4mm² (美国线规 A.W.G. 14~12) 最大电流: I_{max}=37A

型号规格 Item No	尺寸Dimension(mm)				
	F	L	H	Dφ	dφ
PTN3.5-10	2.8	14.8	6.0	5.0	3.0
PTN3.5-13	2.8	19.8			

电线范围 Wire range: 4~6mm² (美国线规 A.W.G. 12~10) 最大电流: I_{max}=48A

型号规格 Item No	尺寸Dimension(mm)				
	F	L	H	Dφ	dφ
PTN5.5-13	2.8	19.8	6.0	5.6	3.4



子弹形公预绝缘接头 Insulated Bullet Male Disconnects

Material
Insulation: PVC
Terminal Body: Brass
Plating: Tin

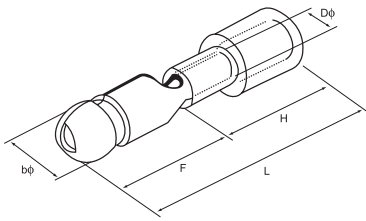


电线范围 Wire range: 0.5~1.5mm² (美国线规 A.W.G. 22~16) 最大电流: I_{max}=10A

型号规格 Item No	尺寸Dimension(mm)					颜色 Color
	bφ	F	Dφ	H	L	
MPD1.25-156	4.0	11.0	1.7	10.0	21.0	红色 Red
MPD1.25-176	4.5	14.0	1.7	10.0	24.0	

电线范围 Wire range: 1.5~2.5mm² (美国线规 A.W.G. 16~14) 最大电流: I_{max}=15A

型号规格 Item No	尺寸Dimension(mm)					颜色 Color
	bφ	F	Dφ	H	L	
MPD2-156	4.0	11.0	2.3	10.0	21.0	蓝色 Blue
MPD2-176	4.5	14.0	2.3	10.0	24.0	
MPD2-195	5.0	11.0	2.3	10.0	21.0	



电线范围 Wire range: 4~6mm² (美国线规 A.W.G. 12~10) 最大电流: I_{max}=24A

型号规格 Item No	尺寸Dimension(mm)					颜色 Color
	bφ	F	Dφ	H	L	
MPD5.5-195	5.0	12.0	3.4	13.0	25.0	黄色 Yellow

子弹形母全绝缘接头 Insulated Bullet Female Disconnects

Material
Insulation: PVC
Terminal Body: Brass
Plating: Tin

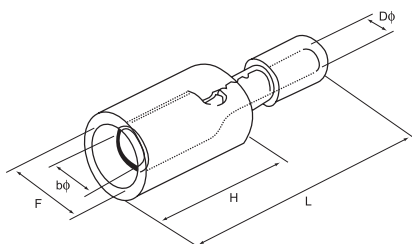


电线范围 Wire range: 0.5~1.5mm² (美国线规 A.W.G. 22~16) 最大电流: I_{max}=10A

型号规格 Item No	尺寸Dimension(mm)					颜色 Color
	bφ	F	Dφ	H	L	
FRD1.25-156	4.0	6.3	1.7	13.0	24.0	红色 Red
FRD1.25-176	4.5	6.3	1.7	13.0	24.0	

电线范围 Wire range: 1.5~2.5mm² (美国线规 A.W.G. 16~14) 最大电流: I_{max}=15A

型号规格 Item No	尺寸Dimension(mm)					颜色 Color
	bφ	F	Dφ	H	L	
FRD2-156	4.0	6.3	2.3	14.0	24.5	蓝色 Blue
FRD2-176	4.5	6.3	2.3	14.0	24.5	
FRD2-195	5.0	7.0	2.3	14.0	24.5	



电线范围 Wire range: 4~6mm² (美国线规 A.W.G. 12~10) 最大电流: I_{max}=24A

型号规格 Item No	尺寸Dimension(mm)					颜色 Color
	bφ	F	Dφ	H	L	
FRD5.5-195	5.0	7.0	3.4	14.0	29.5	黄色 Yellow

公预绝缘接头 Insulated Male Disconnects

Material
Insulation: PVC
Terminal Body: Brass
Plating: Tin

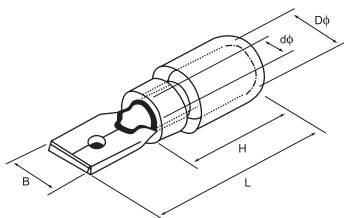


电线范围 Wire range: 0.5~1.5mm² (美国线规 A.W.G. 22~16) 最大电流: I_{max}=10A

型号规格 Item No	接插规格(mm) Nema Tab	尺寸Dimension(mm)					颜色 Color
		B	dφ	Dφ	L	H	
MDD1.25-110(5)	0.5× 2.8	2.8	1.7	4.3	17.7	10.0	红色 Red
MDD1.25-110(8)	0.8× 2.8	2.8	1.7	4.3	17.7	10.0	
MDD1.25-187(5)	0.5× 4.75	4.75	1.7	4.3	20.0	10.0	
MDD1.25-187(8)	0.8× 4.75	4.75	1.7	4.3	20.0	10.0	
MDD1.25-250	0.8× 6.35	6.35	1.7	4.3	21.0	10.0	

电线范围 Wire range: 1.5~2.5mm² (美国线规 A.W.G. 16~14) 最大电流: I_{max}=15A

型号规格 Item No	接插规格(mm) Nema Tab	尺寸Dimension(mm)					颜色 Color
		B	dφ	Dφ	L	H	
MDD1.25-110(5)	0.5× 2.8	2.8	2.3	4.3	7.7	10.0	蓝色 Blue
MDD1.25-110(8)	0.8× 2.8	2.8	2.3	4.3	7.7	10.0	
MDD2-187(5)	0.5× 4.75	4.75	2.3	4.3	20.0	10.0	
MDD2-187(8)	0.8× 4.75	4.75	2.3	4.3	20.0	10.0	
MDD2-250	0.8× 6.35	6.35	2.3	4.3	21.0	10.0	



电线范围 Wire range: 4~6mm² (美国线规 A.W.G. 12~10) 最大电流: I_{max}=24A

型号规格 Item No	接插规格(mm) Nema Tab	尺寸Dimension(mm)					颜色 Color
		B	dφ	Dφ	L	H	
MDD5.5-250	0.8× 6.35	6.35	3.4	5.7	25.0	13.0	黄色 Yellow

母预绝缘接头 Insulated Female Disconnects

Material
Insulation: PVC
Terminal Body: Brass
Plating: Tin



电线范围 Wire range: 0.5~1.5mm² (美国线规 A.W.G. 22~16) 最大电流: I_{max}=10A

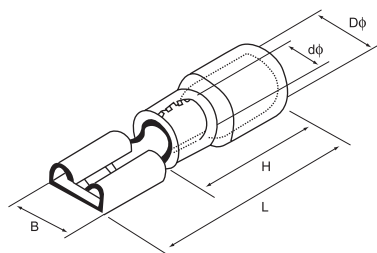
型号规格 Item No	接插规格(mm) Nema Tab	尺寸Dimension(mm)					颜色 Color
		B	dφ	Dφ	L	H	
FDD1.25-110(5)	0.5× 2.8	3.8	1.7	3.8	19.0	10.0	红色 Red
FDD1.25-110(8)	0.8× 2.8	3.8	1.7	3.8	19.0	10.0	
FDD1.25-187(5)	0.5× 4.75	5.6	1.7	3.8	19.0	10.0	
FDD1.25-187(8)	0.8× 4.75	5.6	1.7	3.8	19.0	10.0	
FDD1.25-205	0.5× 5.2	6.5	1.7	3.8	20.0	10.0	
FDD1.25-250	0.8× 6.35	7.4	1.7	3.8	21.0	10.0	

电线范围 Wire range: 1.5~2.5mm² (美国线规 A.W.G. 16~14) 最大电流: I_{max}=15A

型号规格 Item No	接插规格(mm) Nema Tab	尺寸Dimension(mm)					颜色 Color
		B	dφ	Dφ	L	H	
FDD2-110(5)	0.5× 2.8	3.8	2.3	4.3	19.0	10.0	蓝色 Blue
FDD2-110(8)	0.8× 2.8	3.8	2.3	4.3	19.0	10.0	
FDD2-187(5)	0.5× 4.75	5.6	2.3	4.3	19.0	10.0	
FDD2-187(8)	0.8× 4.75	5.6	2.3	4.3	19.0	10.0	
FDD2-205	0.5× 5.2	6.5	2.3	4.3	20.0	10.0	
FDD2-250	0.8× 6.35	7.4	2.3	4.3	21.0	10.0	
FDD2-312	0.8× 8.0	9.0	2.3	4.3	23.0	10.0	

电线范围 Wire range: 4~6mm² (美国线规 A.W.G. 12~10) 最大电流: I_{max}=24A

型号规格 Item No	接插规格(mm) Nema Tab	尺寸Dimension(mm)					颜色 Color
		B	dφ	Dφ	L	H	
FDD5.5-250	0.8× 6.35	7.4	3.4	5.7	25.0	13.0	黄色 Yellow
FDD5.5-375	1.2× 9.4	10.9	3.4	5.7	29.6	13.0	

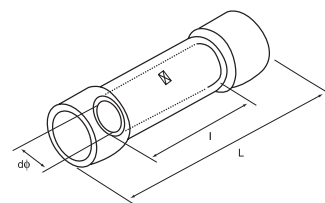


TL-JTK 型短形全绝缘中间接头 Insulated Parallel Connectors

Material
Insulation: PVC
Terminal Body: Copper
Plating: Tin



型号规格 Item No	尺寸Dimension(mm)			电线范围 Wire range		最大电流 I _{max}	颜色 Color
	l	dφ	L	A.W.G.	mm ²		
PVT1.25	8.0	1.7	16.0	22-16	0.5-1.5	19A	红色 Red
PVT2	8.0	2.3	16.0	16-14	1.5-2.5	27A	蓝色 Blue
PVT5.5	8.5	3.4	20.5	12-10	4-6	48A	黄色 Yellow



TL-JTK 型长形全绝缘中间接头 Insulated Butt Connectors

Material
Insulation: PVC
Terminal Body: Copper
Plating: Tin

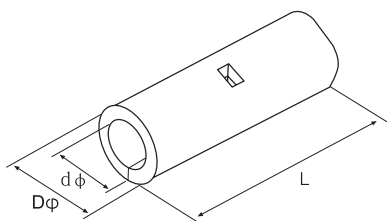
型号规格 Item No	尺寸Dimension(mm)			电线范围 Wire range		最大电流 I _{max}	颜色 Color
	l	dφ	L	A.W.G.	mm ²		
BV1.25	15.0	1.7	26.0	22-16	0.5-1.5	19A	红色 Red
BV2	15.0	2.3	26.0	16-14	1.5-2.5	27A	蓝色 Blue
BV5.5	15.0	3.4	26.0	12-10	4-6	48A	黄色 Yellow
BV8	21.0	4.5	32.0	8	6-10	62A	红色 Red
BV14	26.0	5.8	42.0	6	10-16	88A	蓝色 Blue
BV22	29.0	7.7	50.0	4	16-25	115A	黄色 Yellow
BV38	32.0	9.4	55.0	2	25-35	160A	红色 Red



TL 型中间裸接头 Non-Insulated Butt Connectors

Material
Terminal Body: Copper
Plating: Tin

型号规格 Item No	尺寸Dimension(mm)			电线范围 Wire range	
	dφ	Dφ	L	A.W.G.	mm ²
BN1.25	1.7	3.3	15.0	22-16	0.5-1.5
BN2	2.3	3.9	15.0	16-14	1.5-2.5
BN3.5	3.0	5.0	15.0	14-12	2.5-4
BN5.5	3.4	5.4	15.0	12-10	4-6
BN8	4.6	7.0	21.0	8	6-10
BN14	5.9	8.9	26.0	6	10-16
BN22	7.8	11.3	29.0	4	16-25
BN38	9.5	13.2	32.0	2	25-35
BN60	11.4	15.3	36.0	1/0	35-50
BN70	13.3	17.5	37.0	2/0	50-70
BN80	14.5	19.5	38.0	3/0	70-95
BN100	16.4	22.1	38.0	4/0	95-120
BN150	19.5	26.4	54.0	250/300MCM	150
BN180	21.0	28.5	57.0	300/350MCM	185
BN200	24.0	32.4	63.0	400/500MCM	240
BN325	28.0	37.0	72.0	500/600MCM	300
PNT1.25	1.7	3.3	8.0	22-16	0.5-1.5
PNT2	2.3	4.0	8.0	16-14	1.5-2.5
PNT5.5	3.4	5.4	8.5	12-10	4-6



母全绝缘接头

Fully Insulated Female Disconnects

Material
Insulation: PVC
Terminal Body: Brass
Plating: Tin

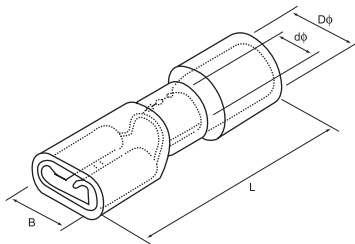


电线范围 Wire range: 0.5~1.5mm² (美国线规 A.W.G. 22~16) 最大电流: I_{max}=10A

型号规格 Item No	接插规格(mm) Nema Tab	尺寸Dimension(mm)				颜色 Color
		B	dφ	Dφ	L	
FDFD1.25-110(5)	0.5×2.8	3.8	1.7	3.8	20.0	红色 Red
FDFD1.25-110(8)	0.8×2.8	3.8	1.7	3.8	20.0	
FDFD1.25-187(5)	0.5×4.75	5.6	1.7	3.8	20.0	
FDFD1.25-187(8)	0.8×4.75	5.6	1.7	3.8	20.0	
FDFD1.25-250	0.8×6.35	7.4	1.7	3.8	21.5	

电线范围 Wire range: 1.5~2.5mm² (美国线规 A.W.G. 16~14) 最大电流: I_{max}=15A

型号规格 Item No	接插规格(mm) Nema Tab	尺寸Dimension(mm)				颜色 Color
		B	dφ	Dφ	L	
FDFD2-110(5)	0.5×2.8	3.8	2.3	4.3	20.0	蓝色 Blue
FDFD2-110(8)	0.8×2.8	3.8	2.3	4.3	20.0	
FDFD2-187(5)	0.5×4.75	5.6	2.3	4.3	22.0	
FDFD2-187(8)	0.8×4.75	5.6	2.3	4.3	22.0	
FDFD2-250	0.8×6.35	7.4	2.3	4.3	24.0	



电线范围 Wire range: 4~6mm² (美国线规 A.W.G. 12~10) 最大电流: I_{max}=24A

型号规格 Item No	接插规格(mm) Nema Tab	尺寸Dimension(mm)				颜色 Color
		B	dφ	Dφ	L	
FDFD5.5-187(5)	0.5×4.8	5.6	3.4	5.7	23.8	黄色 Yellow
FDFD5.5-250	0.8×6.35	7.4	3.4	5.7	25.5	
FDFD5.5-375	1.2×9.4	10.9	3.4	5.7	30.0	

肩背形公母预绝缘接头

Insulated Piggy Back Disconnects

Material
Insulation: PVC
Terminal Body: Brass
Plating: Tin

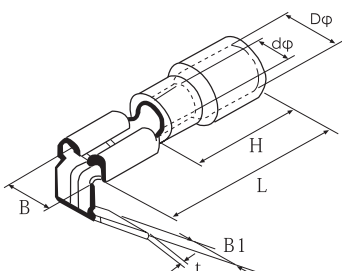


电线范围 Wire range: 0.5~1.5mm² (美国线规 A.W.G. 22~16) 最大电流: I_{max}=10A

型号规格 Item No	接插规格(mm) Nema Tab	尺寸Dimension(mm)					颜色 Color	
		B	B1	H	Dφ	dφ		
PBDD1.25-250	0.8×6.35	7.4	6.35	10.0	3.8	1.7	21.5	红色 Red

电线范围 Wire range: 1.5~2.5mm² (美国线规 A.W.G. 16~14) 最大电流: I_{max}=15A

型号规格 Item No	接插规格(mm) Nema Tab	尺寸Dimension(mm)					颜色 Color	
		B	B1	H	Dφ	dφ		
PBDD2-250	0.8×6.35	7.4	6.35	10.0	4.3	2.3	21.5	蓝色 Blue



电线范围 Wire range: 4~6mm² (美国线规 A.W.G. 12~10) 最大电流: I_{max}=24A

型号规格 Item No	接插规格(mm) Nema Tab	尺寸Dimension(mm)					颜色 Color	
		B	B1	H	Dφ	dφ		
PBDD5.5-250	0.8×6.35	7.4	6.35	13.0	5.7	3.4	25.0	黄色 Yellow

片形预绝缘端头 Insulated Blade Terminals

Material
Insulation: PVC
Terminal Body: Copper
Plating: Tin

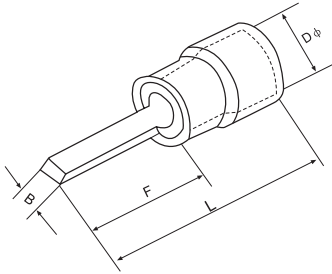


电线范围 Wire range: 0.5~1.5mm² (美国线规 A.W.G. 22~16) 最大电流: I_{max}=19A

型号规格 Item No	尺寸Dimension(mm)				颜色 Color
	B	L	F	Dφ	
DBV1.25-10	2.3	20.0	10.0	4.3	红色 Red
DBV1.25-11	3.0	21.0	11.0		
DBV1.25-14	3.0	24.0	14.0		
DBV1.25-18	2.2	28.0	18.0		

电线范围 Wire range: 1.5~2.5mm² (美国线规 A.W.G. 16~14) 最大电流: I_{max}=27A

型号规格 Item No	尺寸Dimension(mm)				颜色 Color
	B	L	F	Dφ	
DBV2-9	2.8	19.0	9.0	4.9	蓝色 Blue
DBV2-10	2.4	20.0	10.0		
DBV2-14	2.4	24.0	14.0		
DBV2-18	2.2	28.0	18.0		



电线范围 Wire range: 4~6mm² (美国线规 A.W.G. 12~10) 最大电流: I_{max}=48A

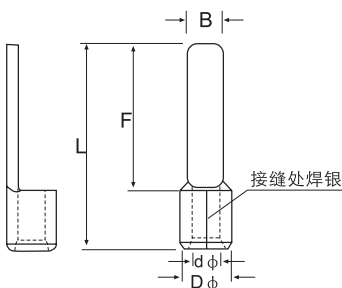
型号规格 Item No	尺寸Dimension(mm)				颜色 Color
	B	L	F	Dφ	
DBV5.5-10	2.8	22.5	10.0	5.6	黄色 Yellow
DBV5.5-14	4.5	26.5	14.0		
DBV5.5-18	4.5	30.5	18.0		

片形裸端头 Non-Insulated Blade Terminals

Material
Terminal Body: Copper
Plating: Tin

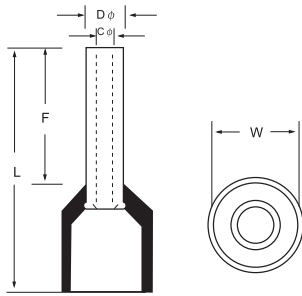


型号规格 Item No	尺寸Dimension(mm)					电线范围 Wire range	
	B	F	L	Dφ	dφ	A.W.G.	mm ²
DBN1.25-10	2.3	10.0	14.8	3.4	1.7	22-16	0.5-1.5
DBN1.25-11	3.0	11.0	15.8				
DBN1.25-14	3.0	14.0	18.8				
DBN1.25-18	2.2	18.0	22.8				
DBN2-9	2.8	9.0	13.8	4.1	2.3	16-14	1.5-2.5
DBN2-10	2.4	10.0	14.8				
DBN2-14	2.4	14.0	18.8				
DBN2-18	2.2	18.0	22.8				
DBN5.5-10	2.8	10.0	16.0	5.6	3.4	12-10	4-6
DBN5.5-14	4.5	14.0	20.0				
DBN5.5-18	4.5	18.0	24.0				
DBN8-14	5.0	14.0	22.5	7.2	4.5	8	6-10
DBN14-16	6.0	16.0	30.0	9.0	5.8	6	10-16



TG-JT 型管形预绝缘端头 Insulated Cord End Terminals

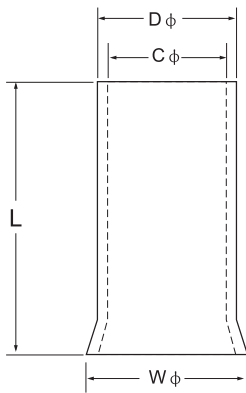
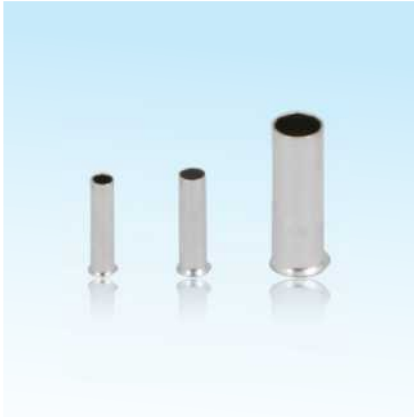
Material
Insulation: P.P.
Terminal Body: Copper
Plating: Tin



型号规格 Item No	尺寸 Dimension(mm)					电线范围 Wire range		法国颜色 French color	德国颜色 German color	DIN颜色 DIN color
	F	L	W	Dφ	Cφ	A.W.G.	mm ²			
E0505	5.0	11.0								
E0506	6.0	12.0								
E0508	8.0	14.0	2.6	1.3	1.0	22	0.5	白色 White	橙色 Orange	白色 White
E0510	10.0	16.0								
E0512	12.0	18.0								
E7506	6.0	12.3								
E7508	8.0	14.3								
E7510	10.0	16.3	2.8	1.5	1.2	20	0.75	蓝色 Blue	白色 White	灰色 Grey
E7512	12.0	18.3								
E7518	18.0	24.3								
E1006	6.0	12.3								
E1008	8.0	14.3								
E1010	10.0	16.3	3.0	1.7	1.4	18	1.0	红色 Red	黄色 Yellow	红色 Red
E1012	12.0	18.3								
E1018	18.0	24.3								
E1508	8.0	14.3								
E1510	10.0	16.3								
E1512	12.0	18.3	3.5	2.0	1.7	16	1.5	黑色 Black	红色 Red	黑色 Black
E1515	15.0	21.3								
E1518	18.0	24.3								
E2508	8.0	15.4								
E2510	10.0	17.4								
E2512	12.0	19.4	4.0	2.6	2.3	14	2.5	灰色 Grey	蓝色 Blue	蓝色 Blue
E2518	18.0	25.4								
E2525	25.0	32.4								
E4009	9.0	16.4								
E4010	10.0	17.4								
E4012	12.0	19.4	4.5	3.2	2.8	12	4.0	橙色 Orange	灰色 Grey	灰色 Grey
E4018	18.0	25.4								
E6012	12.0	20.5	6.0	3.9	3.5	10	6.0	绿色 Green	黑色 Black	黄色 Yellow
E6018	18.0	26.5								
E10-12	12.0	20.8	7.5	4.9	4.5	8	10	棕色 Brown	乳白色 Ivory	红色 Red
E10-18	18.0	26.8								
E16-12	12.0	22.0	8.7	6.2	5.8	6	16	乳白色 Ivory	绿色 Green	蓝色 Blue
E16-18	18.0	28.0								
E25-12	12.0	24.0								
E25-16	16.0	28.0								
E25-18	18.0	30.0	11.0	7.9	7.5	4	25	黑色 Black	棕色 Brown	黄色 Yellow
E25-22	22.0	34.0								
E35-16	16.0	30.0								
E35-18	18.0	32.0	12.5	8.7	8.3	2	35	红色 Red	米色 Beige	红色 Red
E35-22	22.0	36.0								
E35-25	25.0	39.0								
E50-12	12.0	28.0	15.0	10.9	10.3	1/0	50	蓝色 Blue	橄榄色 Olive	蓝色 Blue
E50-20	20.0	36.0								
E70-20	20.0	37.0								
E70-25	25.0	42.0	16.0	14.3	13.5	2/0	70	黄色 Yellow	黄色 Yellow	黄色 Yellow
E70-27	27.0	44.0								
E95-25	25.0	44.0	18.5	15.6	14.8	3/0	95	红色 Red	红色 Red	红色 Red
E120-27	27.0	47.6								
E120-32	32.0	52.6	20.3	17.7	16.7	4/0	120	蓝色 Blue	蓝色 Blue	蓝色 Blue
E150-25	25.0	50.6								
E150-27	27.0	52.6	23.4	20.6	19.6	250/300 MCM	150	黄色 Yellow	黄色 Yellow	黄色 Yellow
E150-32	32.0	57.6								

TG 型管形裸端头 Non-Insulated Cord End Terminals

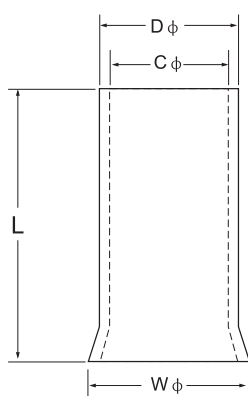
Material
Terminal Body: Copper
Plating: Tin



型号规格 Item No	尺寸Dimension(mm)				电线范围 Wire range	
	L	Dφ	Cφ	Wφ	A.W.G.	mm ²
EN0306	6.0	1.1	0.8	1.5	24	0.3
EN0308	8.0					
EN0505	5.0	1.3	1.0	1.7	22	0.5
EN0506	6.0					
EN0508	8.0					
EN0510	10.0					
EN0512	12.0					
EN7506	6.0	1.5	1.2	1.9	20	0.75
EN7508	8.0					
EN7510	10.0					
EN7512	12.0					
EN7515	15.0					
EN1006	6.0	1.7	1.4	2.2	18	1.0
EN1008	8.0					
EN1010	10.0					
EN1012	12.0					
EN1015	15.0					
EN1018	18.0					
EN1507	7.0	2.0	1.7	2.5	16	1.5
EN1508	8.0					
EN1510	10.0					
EN1512	12.0					
EN1515	15.0					
EN1518	18.0					
EN2506	6.0	2.6	2.3	3.3	14	2.5
EN2507	7.0					
EN2508	8.0					
EN2510	10.0					
EN2512	12.0					
EN2515	15.0					
EN2518	18.0					
EN4009	9.0					
EN4010	10.0					
EN4012	12.0					
EN4015	15.0					
EN4018	18.0					

TG 型管形裸端头 Non-Insulated Cord End Terminals

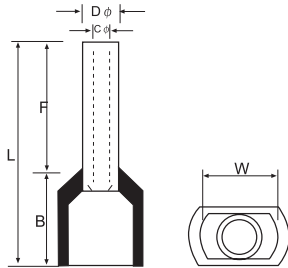
Material
Terminal Body: Copper
Plating: Tin



型号规格 Item No	尺寸Dimension(mm)				电线范围 Wire range	
	L	Dφ	Cφ	Wφ	A.W.G.	mm ²
EN6006	6.0					
EN6010	10.0					
EN6012	12.0	3.9	3.5	4.7	10	6
EN6015	15.0					
EN6018	18.0					
EN10-12	12.0					
EN10-15	15.0					
EN10-16	16.0	4.9	4.5	5.8	8	10
EN10-18	18.0					
EN16-12	12.0					
EN16-15	15.0					
EN16-16	16.0					
EN16-18	18.0					
EN16-20	20.0	6.2	5.8	7.2	6	16
EN16-22	22.0					
EN16-25	25.0					
EN16-30	30.0					
EN25-12	12.0					
EN25-15	15.0					
EN25-16	16.0					
EN25-18	18.0					
EN25-20	20.0	7.9	7.5	9.1	4	25
EN25-22	22.0					
EN25-25	25.0					
EN25-30	30.0					
EN35-12	12.0					
EN35-15	15.0					
EN35-16	16.0					
EN35-18	18.0	8.7	8.3	10.2	2	35
EN35-20	20.0					
EN35-25	25.0					
EN35-30	30.0					
EN50-12	12.0					
EN50-18	18.0					
EN50-22	22.0	10.9	10.3	12.7	1/0	50
EN50-25	25.0					
EN50-30	30.0					
EN70-22	22.0					
EN70-25	25.0	14.3	13.5	15.8	2/0	70
EN70-30	30.0					
EN90-25	25.0					
EN90-30	30.0	15.6	14.8	17.3	3/0	95
EN90-32	32.0					
EN120-30	30.0					
EN120-32	32.0					
EN120-34	34.0	17.7	16.7	20.2	4/0	120
EN120-38	38.0					
EN150-32	32.0					
EN150-34	34.0	20.6	19.6	23.0	250/300 MCM	150
EN150-38	38.0					
EN185-32	32.0					
EN185-40	40.0	21.4	20.2	23.9	300/350 MCM	185

双线管形预绝缘端头 Insulated Twin Cord End Terminals

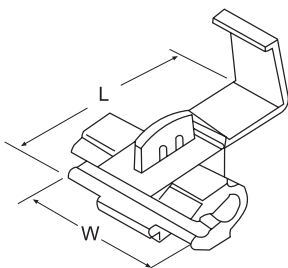
Material
Insulation: P.P.
Terminal Body: Copper
Plating: Tin



型号规格 Item No	尺寸Dimension(mm)						电线范围 Wire range		法国颜色 French color	德国颜色 German color	DIN颜色 DIN color
	F	L	W	B	Dφ	Cφ	A.W.G.	mm ²			
TE0508	8.0	14.5	5.0	6.5	1.8	1.5	2× 22	2× 0.5	白色 White	橙色 Orange	白色 White
TE7508	8.0	14.7	5.5	6.7	2.1	1.8	2× 20	2× 0.75	蓝色 Blue	白色 White	灰色 Grey
TE7510	10.0	16.7									
TE1008	8.0	15.1	5.5	7.1	2.3	2.0	2× 18	2× 1.0	红色 Red	黄色 Yellow	红色 Red
TE1010	10.0	17.1									
TE1508	8.0	15.5	6.4	7.5	2.6	2.3	2× 16	2× 1.5	黑色 Black	红色 Red	黑色 Black
TE1510	10.0	17.5									
TE1512	12.0	19.5	8.0	8.5	3.3	2.9	2× 14	2× 2.5	灰色 Grey	蓝色 Blue	蓝色 Blue
TE2510	10.0	18.5									
TE2512	12.0	20.5									
TE2513	13.0	21.5									
TE4012	12.0	23.1	8.8	11.1	4.2	3.8	2× 12	2× 4	橙色 Orange	灰色 Grey	灰色 Grey
TE6014	14.0	26.1	9.5	12.1	5.3	4.9	2× 10	2× 6	绿色 Green	黑色 Black	黄色 Yellow
TE10-14	14.0	26.6	12.6	12.6	6.9	6.5	2× 8	2× 10	棕色 Brown	乳白色 Ivory	红色 Red
TE16-14	14.0	31.3	19.0	17.3	8.7	8.6	2× 6	2× 16	乳白色 Ivory	绿色 Green	蓝色 Blue

快速连接接头 Quick Splice Connectors

Material
Insulation: P.P.
Terminal Body: Brass
Plating: Tin



型号规格 Item No	尺寸Dimension(mm)		电线范围 Wire range		最大电流 I _{max}	颜色 Color
	W	L	A.W.G.	mm ²		
878100 (801P3)	20.0	27.0	22-18	0.5-1.0	10A	红色Red
878101 (802P3)	20.0	27.0	18-14	0.75-2.5	15A	蓝色Blue
878201 (805P3)	20.5	34.5	12-10	4-6	24A	黄色Yellow
878006	10.0	38.0	22-18	0.5-1.0	10A	红色Red
878106	10.0	38.0	18-14	0.75-2.5	15A	蓝色Blue
878206	10.0	38.0	12	4	24A	黄色Yellow
878109	28.0	31.0	18-14	0.75-2.5	15A	黑色Black

凸缘叉形预绝缘端头 Insulated Flange Spade Terminals

Material
Insulation: PVC
Terminal Body: Copper
Plating: Tin

电线范围 Wire range: 0.5~1.5mm² (美国线规 A.W.G. 22-16) 最大电流: I_{max}=19A

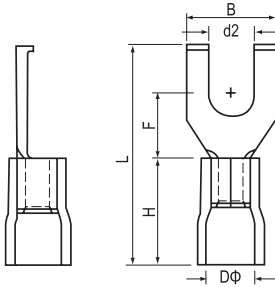
型号规格 Item No	美制螺栓号 Stud size	尺寸Dimension(mm)						颜色 Color
		d2	B	L	F	H	Dφ	
FSV1.25-3.5	#6	3.7	7.5	19.0	5.1	10.0	4.3	红色 Red
FSV1.25-4	#8	4.3	7.5	19.0	5.1			
FSV1.25-5	#10	5.3	7.5	19.0	5.1			

电线范围 Wire range: 1.5~2.5mm² (美国线规 A.W.G. 16-14) 最大电流: I_{max}=27A

型号规格 Item No	美制螺栓号 Stud size	尺寸Dimension(mm)						颜色 Color
		d2	B	L	F	H	Dφ	
FSV2-3.5	#6	3.7	7.5	19.0	5.2	10.0	4.9	蓝色 Blue
FSV2-4	#8	4.3	7.5	19.0	5.2			
FSV2-5	#10	5.3	7.5	19.0	5.2			

电线范围 Wire range: 4~6mm² (美国线规 A.W.G. 12-10) 最大电流: I_{max}=48A

型号规格 Item No	美制螺栓号 Stud size	尺寸Dimension(mm)						颜色 Color
		d2	B	L	F	H	Dφ	
FSV5.5-3.5	#6	3.7	8.5	25.5	7.5	13.0	6.7	黄色 Yellow
FSV5.5-4	#8	4.3	8.5	25.5	7.5			
FSV5.5-5	#10	5.3	8.5	25.5	7.5			



凹片形预绝缘端头 Insulated Lipped Blade Terminals

Material
Insulation: PVC
Terminal Body: Copper
Plating: Tin

电线范围 Wire range: 0.5~1.5mm² (美国线规 A.W.G. 22-16) 最大电流: I_{max}=19A

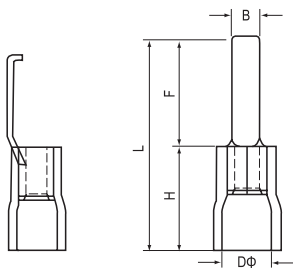
型号规格 Item No	尺寸Dimension(mm)					颜色 Color
	B	L	F	H	Dφ	
LBV1.25-3	3.0	26.8	16.8	10.0	4.3	红色 Red
LBV1.25-4.6	4.6	26.8	16.8			

电线范围 Wire range: 1.5~2.5mm² (美国线规 A.W.G. 16-14) 最大电流: I_{max}=27A

型号规格 Item No	尺寸Dimension(mm)					颜色 Color
	B	L	F	H	Dφ	
LBV2-3	3.0	26.8	16.8	10.0	4.9	蓝色 Blue
LBV2-4.6	4.6	26.8	16.8			

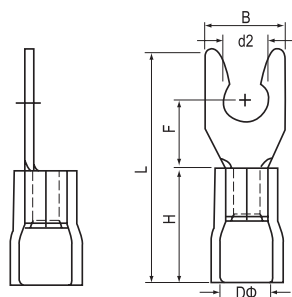
电线范围 Wire range: 4~6mm² (美国线规 A.W.G. 12-10) 最大电流: I_{max}=48A

型号规格 Item No	尺寸Dimension(mm)					颜色 Color
	B	L	F	H	Dφ	
LBV5.5-3	3.0	29.8	16.8	13.0	6.7	黄色 Yellow
LBV5.5-4.6	4.6	29.8	16.8			



锁扣叉形预绝缘端头 Insulated Locking Spade Terminals

Material
Insulation: PVC
Terminal Body: Copper
Plating: Tin



电线范围 Wire range: 0.5~1.5mm² (美国线规 A.W.G. 22-16) 最大电流: I_{max}=19A

型号规格 Item No	美制螺栓号 Stud size	尺寸Dimension(mm)						颜色 Color
		d2	B	L	F	H	Dφ	
LSV1.25-3.5	#6	3.7	6.4	21.2	6.5	10.0	4.3	红色 Red
LSVS1.25-4	#8	4.3	7.2	21.2	6.5			
LSVL1.25-4	#8	4.3	8.1	21.2	6.5			
LSVS1.25-5	#10	5.3	8.1	21.2	6.5			
LSVL1.25-5	#10	5.3	9.5	21.2	6.5			

电线范围 Wire range: 1.5~2.5mm² (美国线规 A.W.G. 16-14) 最大电流: I_{max}=27A

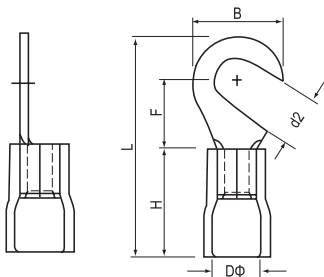
型号规格 Item No	美制螺栓号 Stud size	尺寸Dimension(mm)						颜色 Color
		d2	B	L	F	H	Dφ	
LSV2-3.5	#6	3.7	6.0	21.2	6.5	10.0	4.9	蓝色 Blue
LSVS2-4	#8	4.3	7.2	21.2	6.5			
LSVL2-4	#8	4.3	8.1	21.2	6.5			
LSVS2-5	#10	5.3	8.1	21.2	6.5			
LSVL2-5	#10	5.3	9.5	21.2	6.5			

电线范围 Wire range: 4~6mm² (美国线规 A.W.G. 12-10) 最大电流: I_{max}=48A

型号规格 Item No	美制螺栓号 Stud size	尺寸Dimension(mm)						颜色 Color
		d2	B	L	F	H	Dφ	
LSV5.5-3.5	#6	3.7	8.3	25.2	7.5	13.0	6.7	黄色 Yellow
LSV5.5-4	#8	4.3	8.3	25.2	7.5			
LSV5.5-5	#10	5.3	9.0	25.2	7.5			
LSV5.5-6	1/4	6.4	12.0	31.2	12.0			

钩形预绝缘端头 Insulated Hook Terminals

Material
Insulation: PVC
Terminal Body: Copper
Plating: Tin



电线范围 Wire range: 0.5~1.5mm² (美国线规 A.W.G. 22-16) 最大电流: I_{max}=19A

型号规格 Item No	美制螺栓号 Stud size	尺寸Dimension(mm)						颜色 Color
		d2	B	L	F	H	Dφ	
HV1.25-3.5	#6	3.7	8.0	21.0	7.0	10.0	4.3	红色 Red
HV1.25-4	#8	4.3	8.0	21.0	7.0			
HV1.25-5	#10	5.3	8.0	21.0	7.0			
HV1.25-6	1/4	6.4	11.6	27.0	11.0			

电线范围 Wire range: 1.5~2.5mm² (美国线规 A.W.G. 16-14) 最大电流: I_{max}=27A

型号规格 Item No	美制螺栓号 Stud size	尺寸Dimension(mm)						颜色 Color
		d2	B	L	F	H	Dφ	
HV2-3.5	#6	3.7	8.5	22.0	7.75	10.0	4.9	蓝色 Blue
HV2-4	#8	4.3	8.5	22.0	7.75			
HV2-5	#10	5.3	9.5	22.0	7.25			
HV2-6	1/4	6.4	12.0	27.0	11.0			

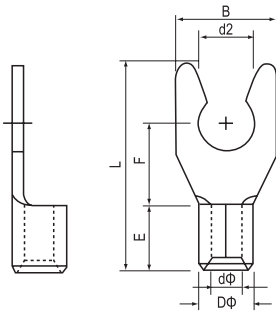
电线范围 Wire range: 4~6mm² (美国线规 A.W.G. 12-10) 最大电流: I_{max}=48A

型号规格 Item No	美制螺栓号 Stud size	尺寸Dimension(mm)						颜色 Color
		d2	B	L	F	H	Dφ	
HV5.5-3.5	#6	3.7	7.2	21.4	5.9	13.0	6.7	黄色 Yellow
HV5.5-4	#8	4.3	9.5	25.5	8.25			
HV5.5-5	#10	5.3	9.5	25.5	8.25			
HV5.5-6	1/4	6.4	12.0	31.5	13.0			

锁扣叉形裸端头

Non-Insulated Locking Spade Terminals

Material
Terminal Body: Copper
Plating: Tin



电线范围 Wire range: 0.5~1.5mm² (美国线规 A.W.G. 22-16) 最大电流: I_{max}=19A

型号规格 Item No	美制螺栓号 Stud size	尺寸Dimension(mm)						
		d2	B	F	L	E	Dφ	dφ
LSNB1.25-3.5	#6	3.7	6.4					
LSNBS1.25-4	#8	4.3	7.2					
LSNBL1.25-4	#8	4.3	8.1	6.5	16.0	4.8	3.4	1.7
LSNBS1.25-5	#10	5.3	8.1					
LSNBL1.25-5	#10	5.3	9.5					

电线范围 Wire range: 1.5~2.5mm² (美国线规 A.W.G. 16-14) 最大电流: I_{max}=27A

型号规格 Item No	美制螺栓号 Stud size	尺寸Dimension(mm)						
		d2	B	F	L	E	Dφ	dφ
LSNB2-3.5	#6	3.7	6.0					
LSNBS2-4	#8	4.3	7.2					
LSNBL2-4	#8	4.3	8.1	6.5	16.0	4.8	4.1	2.3
LSNBS2-5	#10	5.3	8.1					
LSNBL2-5	#10	5.3	9.5					

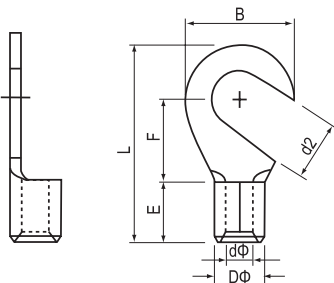
电线范围 Wire range: 4~6mm² (美国线规 A.W.G. 12-10) 最大电流: I_{max}=48A

型号规格 Item No	美制螺栓号 Stud size	尺寸Dimension(mm)						
		d2	B	F	L	E	Dφ	dφ
LSNB5.5-3.5	#6	3.7	8.3					
LSNB5.5-4	#8	4.3	8.3	7.5	19.5	6.0	5.6	3.4
LSNB5-5	#10	5.3	9.0					
LSNB5-6	1/4	6.4	12.0	12.0	24.5			

钩形裸端头

Non-Insulated Hook Terminals

Material
Terminal Body: Copper
Plating: Tin



电线范围 Wire range: 0.5~1.5mm² (美国线规 A.W.G. 22-16) 最大电流: I_{max}=19A

型号规格 Item No	美制螺栓号 Stud size	尺寸Dimension(mm)						
		d2	B	F	L	E	Dφ	dφ
HNB1.25-3.5	#6	3.7	8.0	7.0	15.8			
HNB1.25-4	#8	4.3	8.0	7.0	15.8	4.8	3.4	1.7
HNB1.25-5	#10	5.3	8.0	7.0	15.8			
HNB1.25-6	1/4	6.4	11.6	11.0	21.8			

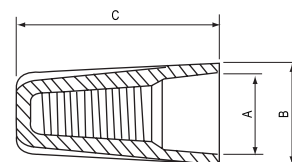
电线范围 Wire range: 1.5~2.5mm² (美国线规 A.W.G. 16-14) 最大电流: I_{max}=27A

型号规格 Item No	美制螺栓号 Stud size	尺寸Dimension(mm)						
		d2	B	F	L	E	Dφ	dφ
HNB2-3.5	#6	3.7	8.5	7.8	16.8			
HNB2-4	#8	4.3	8.5	7.8	16.8	4.8	4.1	2.3
HNB2-5	#10	5.3	9.5	7.3	16.8			
HNB2-6	1/4	6.4	12.0	11.0	21.8			

电线范围 Wire range: 4~6mm² (美国线规 A.W.G. 12-10) 最大电流: I_{max}=48A

型号规格 Item No	美制螺栓号 Stud size	尺寸Dimension(mm)						
		d2	B	F	L	E	Dφ	dφ
HNB5.5-3.5	#6	3.7	7.2	6.1	15.7			
HNB5.5-4	#8	4.3	9.5	9.5	19.8			
HNB5.5-5	#10	5.3	9.5	9.5	19.8	6.0	5.6	3.4
HNB5.5-6	1/4	6.4	12.0	10.3	22.5			
HNB5.5-8	5/16	8.4	15.0	13.5	27.0			

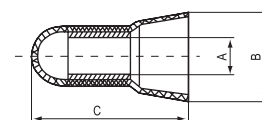
螺旋式压线帽 Screw-On Wire Connectors



Material
Insulation: PVC
Terminal Body: Steel
Plating: Zn

型号规格 Item No	尺寸Dimension(mm)			电线范围 Wire range(mm ²)	颜色 Color
	A	B	C		
SP1	6.70	8.60	15.20	最少Min 0.75×1+0.5×1 最多Max 1.5×2	灰色 Gray
SP2	7.40	9.80	17.60	最少Min 0.75×3 最多Max 1.5×3	蓝色 Blue
SP3	9.90	12.70	22.00	最少Min 0.75×3 最多Max 1.5×3+1×1	橙色 Orange
SP4	11.20	14.00	24.60	最少Min 0.25×1+0.75×1 最多Max 2.5×4+0.75×1	黄色 Yellow
SP6	13.30	16.40	26.50	最少Min 0.25×2 最多Max 6×2+4×2	红色 Red

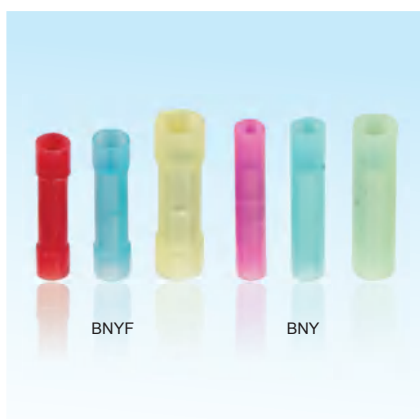
闭端端子 Closed-End Wire Connectors



Material
Insulation: Nylon
Terminal Body: Copper
Plating: Tin

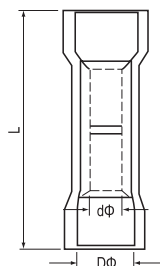
型号规格 Item No	尺寸Dimension(mm)			电线范围 Wire range		颜色 Color
	A	B	C	A.W.G.	mm ²	
CE1	2.60	7.80	18.00	22-16	0.5-1.5	原色 Nature
CE2	3.10	9.50	19.70	16-14	1.5-2.5	原色 Nature
CE5	4.40	12.50	25.50	12-18	4-6	原色 Nature
CE8	5.30	14.60	27.70	8	6-10	原色 Nature
PB1	2.3	6.6	15.2	22-16	0.5-1.5	原色 Nature
PB2	3.1	6.9	15.2	16-14	1.5-2.5	原色 Nature
PB5	4.0	10.0	17.8	12-10	4-6	原色 Nature
PB8	5.0	12.6	22.0	8	6-10	原色 Nature

长形全绝缘中间接头(尼龙) Insulated Butt Connectors (Nylon)



Material
Insulation: Nylon
Terminal Body: Copper
Plating: Tin

型号规格 Item No	尺寸Dimension(mm)			电线范围 Wire range		最大电流 I _{max}	颜色 Color
	L	D Φ	d Φ	A.W.G.	mm ²		
BNYF 1.25	25.2	3.2	1.7	22-16	0.5-1.5	19A	红色 Red
BNYF 2	25.4	3.8	2.3	16-14	1.5-2.5	27A	蓝色 Blue
BNYF 5.5	27.7	5.3	3.4	12-10	4-6	48A	黄色 Yellow
BNY 1.25	27.9	3.2	1.7	22-16	0.5-1.5	19A	红色 Red
BNY 2	27.8	3.8	2.3	16-14	1.5-2.5	27A	蓝色 Blue
BNY 5.5	27.7	5.3	3.4	12-10	4-6	48A	黄色 Yellow

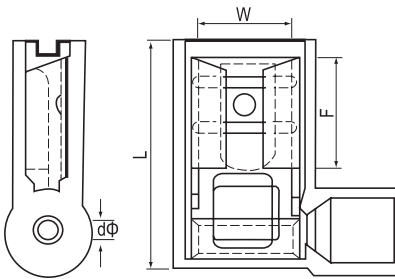


旗形母绝缘接头(尼龙) Insulated Flag Female Disconnects (Nylon)

Material
Insulation: Nylon
Terminal Body: Brass
Plating: Tin



型号规格 Item No	接插规格 Nema Tab (mm)	尺寸Dimension(mm)				电线范围 Wire range		最大电流 Imax	颜色 Color
		W	F	L	dΦ	A.W.G.	mm ²		
FLDNY1.25-187	0.5 x 4.75	5.0	7.0	15.0	1.7	22-16	0.5-1.5	10A	红色 Red
FLDNY1.25-250	0.8 x 6.35	6.6	7.6	16.0	1.7	22-16	0.5-1.5	10A	红色 Red
FLDNY2-187	0.5 x 4.75	5.0	7.0	15.2	2.3	16-14	1.5-2.5	15A	蓝色 Blue
FLDNY2-250	0.8 x 6.35	6.6	7.6	16.0	2.3	16-14	1.5-2.5	15A	蓝色 Blue
FLDNY5.5-250	0.8 x 6.35	7.0	7.6	17.5	3.4	12-10	4-6	24A	黄色 Yellow

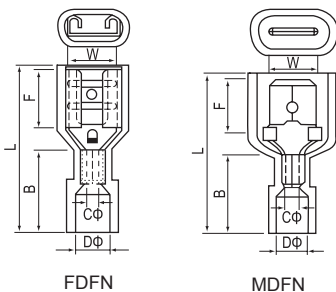


公、母全绝缘接头(尼龙 N型) Fully Insulated Male and Female Disconnects (Nylon N Type)

Material
Insulation: Nylon
Terminal Body: Brass
Plating: Tin



型号规格 Item No	接插规格(mm) Nema Tab	尺寸Dimension(mm)						电线范围 Wire range		最大电流 Imax	颜色 Color
		W	F	L	B	DΦ	CΦ	A.W.G.	mm ²		
FDFN1.25-110	0.5× 2.8	3.2	6.4	19.2	11.0	4.0	1.7	22-16	0.5-1.5	10A	红色 Red
	0.8× 2.8										
FDFN1.25-187	0.5× 4.75	5.0	6.5	20.2	11.0	4.0	1.7	22-16	0.5-1.5	10A	红色 Red
	0.8× 4.75										
FDFN2-187	0.5× 4.75	5.0	6.5	20.2	11.0	4.5	2.3	16-14	1.5-2.5	15A	蓝色 Blue
	0.8× 4.75										
FDFN1.25-250	0.8× 6.35	6.6	7.3	22.0	11.0	4.0	1.7	22-16	0.5-1.5	10A	红色 Red
MDFN1.25-250		6.35	7.7	24.0							
FDFN2-250	0.8× 6.35	6.6	7.3	22.0	11.0	4.5	2.3	16-14	1.5-2.5	15A	蓝色 Blue
MDFN2-250		6.35	7.7	24.0							
FDFN5.5-250	0.8× 6.35	6.6	7.3	24.0	13.0	6.3	3.4	12-10	4-6	24A	黄色 Yellow
MDFN5.5-250		6.35	7.7	25.0							

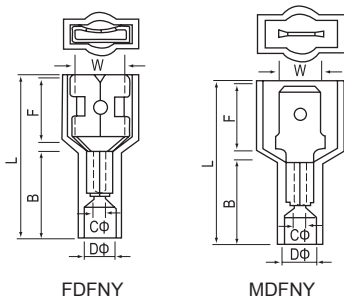


公、母全绝缘接头(尼龙 NY型)

Fully Insulated Male and Female Disconnects (Nylon NY Type)

Material

Insulation: Nylon
Terminal Body: Brass
Plating: Tin



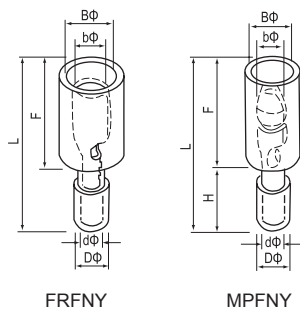
型号规格 Item No	接插规格(mm) Nema Tab	尺寸Dimension(mm)						电线范围 Wire range		最大电流 Imax	颜色 Color
		W	F	L	B	Dφ	Cφ	A.W.G.	mm ²		
FDFNY1.25-250	0.8×6.35	6.6	8.3	22.5	12.0	4.0	1.7	22-16	0.5-1.5	10A	红色 Red
MDFNY1.25-250	0.8×6.35	6.35	8.7	25.0	11.0	4.0	1.7	22-16	0.5-1.5	10A	红色 Red
FDFNY2-250	0.8×6.35	6.6	8.3	22.5	12.0	4.5	2.3	16-14	1.5-2.5	15A	蓝色 Blue
MDFNY2-250	0.8×6.35	6.35	8.7	25.0	11.0	4.5	2.3	16-14	1.5-2.5	15A	蓝色 Blue
FDFNY5.5-250	0.8×6.35	6.6	8.3	23.0	12.0	5.0	3.4	12-10	4-6	24A	黄色 Yellow
MDFNY5.5-250	0.8×6.35	6.35	8.7	25.0	11.0	5.0	3.4	12-10	4-6	24A	黄色 Yellow

子弹形公母全绝缘接头(尼龙)

Fully Insulated Bullet Male and Female Disconnects (Nylon)

Material

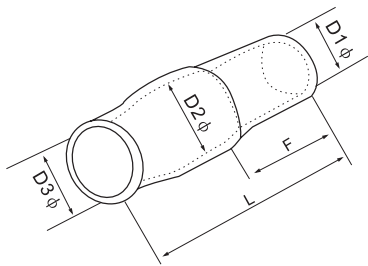
Insulation: Nylon
Terminal Body: Brass
Plating: Tin



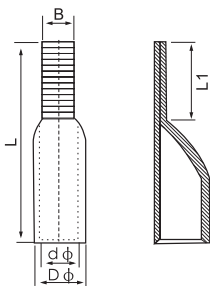
型号规格 Item No	尺寸Dimension(mm)							电线范围 Wire range		最大电流 Imax	颜色 Color
	Bφ	bφ	Dφ	dφ	L	F	H	A.W.G.	mm ²		
FRFNY1.25-156	6.9	3.9	4.3	1.8	24.5	13.5	11.0	22-16	0.5-1.5	19A	红色 Red
MPFNY1.25-156	7.4	4.0	4.3	1.8	25.5	14.8	11.0	22-16	0.5-1.5	19A	红色 Red
FRFNY2-156	6.9	3.9	5.0	2.4	24.5	13.5	11.0	16-14	1.5-2.5	27A	蓝色 Blue
MPFNY2-156	7.4	4.0	5.0	2.4	25.5	14.8	11.0	16-14	1.5-2.5	27A	蓝色 Blue

绝缘软套管 Terminal Insulation

Material
Insulation: PVC



型号规格 Item No	尺寸Dimension(mm)				
	D1φ	D2φ	D3φ	L	F
V-1.25	2.8	3.3	3.1	13.0	7.0
V-2	3.3	4.5	3.7	15.0	7.0
V-3.5	4.2	5.7	4.1	20.0	8.0
V-5.5	4.8	5.7	5.2	20.0	8.0
V-8	6.2	7.2	6.2	20.0	9.0
V-14	7.5	10.0	8.0	27.0	11.0
V-22	10.5	12.0	9.5	30.0	15.0
V-38	12.5	14.0	11.8	36.0	16.5
V-60	15.0	16.8	13.5	39.0	19.0
V-70	16.0	17.5	14.5	43.0	20.0
V-80	17.0	19.0	16.0	47.0	22.0
V-100	19.0	22.0	18.0	54.0	24.0
V-125	21.0	24.0	20.0	57.0	25.0
V-150	23.0	24.5	22.0	65.0	30.0
V-200	27.0	32.0	24.0	65.0	30.0
V-240	29.0	38.0	26.5	77.0	39.0
V-325	29.0	38.0	29.0	77.0	40.0
V-400	42.0	45.0	36.0	85.0	41.0
V-500	46.0	48.0	40.0	88.0	42.0
V-630	52.0	54.0	44.0	92.0	47.0



C45 插针裸端头 C45 Insert Needle Naked Terminals

Material
Terminal Body: Copper
Plating: Tin

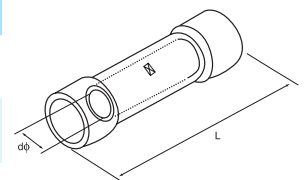
型号规格 Item No	尺寸Dimension(mm)				
	Dφ	dφ	L	L1	B
C45-10	7.5	5.0	34.0	13.5	7.0
C45-16	8.5	6.0	35.0	14.0	7.0
C45-25	10.0	7.0	36.0	14.5	7.0
C45-35	11.0	8.0	37.0	15.0	7.0
C45-50	13.0	10.0	41.0	15.5	7.0
C45-70	16.0	12.0	45.0	16.0	7.0
C45-95	18.0	14.0	50.0	18.0	9.0
C45-120	20.0	15.0	57.0	20.0	9.0
C45-150	22.0	17.0	67.0	24.0	9.0
C45-185	24.0	19.0	77.0	28.0	9.0
C45-240	26.0	21.0	85.0	31.0	9.0

热缩防水中间接头 Heat Shrink Water Proof Butt Connectors

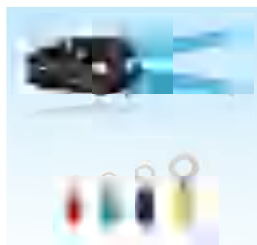
Material
Insulation: PE
Terminal Body: Copper
Plating: Tin



型号规格 Item No	尺寸Dimension(mm)		电线范围 Wire range		最大电流 Imax	颜色 Color
	dφ	L	A.W.G.	mm ²		
BHT1.25	1.7	34.0	22-16	0.5-1.5	19A	红色 Red
BHT2	2.3	34.0	16-14	1.5-2.5	27A	蓝色 Blue
BHT5	3.4	41.0	12-10	4-6	48A	黄色 Yellow



端子压线钳 Terminal Crimping Tools



DS-30J

工具参数 Tool parameters	
压接能力 Capacity	0.5~6.0 mm ²
美国标准 A.W.G.	22~10 A.W.G.
长度 Length	230 mm
重量 Weight	0.6 kg



DS-10

工具参数 Tool parameters	
压接能力 Capacity	1.5~10.0 mm ²
美国标准 A.W.G.	16~8 A.W.G.
长度 Length	230 mm
重量 Weight	0.6 kg



DS-03B

工具参数 Tool parameters	
压接能力 Capacity	0.5~6.0 mm ²
美国标准 A.W.G.	22~10 A.W.G.
长度 Length	230 mm
重量 Weight	0.6 kg



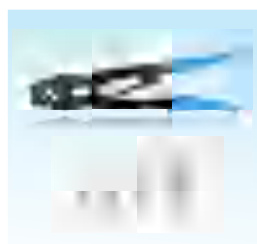
DS-06WF

工具参数 Tool parameters	
压接能力 Capacity	0.5~6.0 mm ²
美国标准 A.W.G.	22~10 A.W.G.
长度 Length	230 mm
重量 Weight	0.6 kg



DS-02C

工具参数 Tool parameters	
压接能力 Capacity	0.25~2.5 mm ²
美国标准 A.W.G.	24~14 A.W.G.
长度 Length	190 mm
重量 Weight	0.4 kg



DS-38

工具参数 Tool parameters	
压接能力 Capacity	5.5~38 mm ²
美国标准 A.W.G.	10~2 A.W.G.
长度 Length	367 mm
重量 Weight	0.95 kg



DS-07FL

工具参数 Tool parameters	
压接能力 Capacity	0.5~2.5 mm ²
美国标准 A.W.G.	22~14 A.W.G.
长度 Length	250 mm
重量 Weight	0.55 kg



DS-103

工具参数 Tool parameters	
压接能力 Capacity	0.5~6.0 mm ²
美国标准 A.W.G.	22~10 A.W.G.
长度 Length	230 mm
重量 Weight	0.6 kg



DS-8-6-4

方形压线模
Square pressure line mode

工具参数 Tool parameters	
压接能力 Capacity	0.25~6.0 mm ²
美国标准 A.W.G.	24~10 A.W.G.
长度 Length	180 mm
重量 Weight	0.38 kg



DS-313

5合1多功能钳 适用于剥线、剪线及压裸端头
Five in one multifunctional crimping pliers
For stripping, cutting wires and crimping
Non-Insulated terminals

工具参数 Tool parameters	
压接能力 Capacity	0.5~6.0 mm ²
美国标准 A.W.G.	22~10 A.W.G.
长度 Length	235 mm
重量 Weight	0.22 kg



DS-313C

用于剪线、剥线和压接绝缘的端子
For cutting cable, skinning, press
insulated terminals or Non-Insulated
terminals.

工具参数 Tool parameters	
压接能力 Capacity	0.5~6.0 mm ²
美国标准 A.W.G.	22~10 A.W.G.
长度 Length	235 mm
重量 Weight	0.22 kg



DS-240 液压压著工具

适用于电缆线铜铝端子的压接
It is applicable to press connection of cable
copper and aluminum terminals.

工具参数 Tool parameters	
压力	10 ton
行程	16 mm
重量	4.8 kg
模具配置	16~240 mm ²
外箱包装尺寸	545 x 130 x 235 mm ²

端子组套 Terminal Assortment Kits



DS-84171 10pcs



DS-85434 5pcs



DS-85688 18pcs



DS-1012 1012pcs 45type Assortment



DS-87503 70pcs



DS-87504 70pcs



DS-87505 70pcs



DS-76 76pcs 18type Assortment



DS-85 85pcs 6type Assortment

端子组套 Terminal Assortment Kits



DS-150 150pcs 18type Assortment



DS-158 158pcs 5type Assortment



DS-175 175pcs 18type Assortment



DS-180 180pcs 18type Assortment



DS-300 300pcs 18type Assortment



DS-450 450pcs 18type Assortment



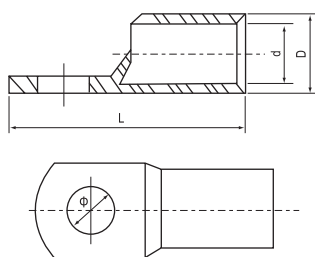
DS-500 500pcs 18type Assortment



DS-520 520pcs 18type Assortment

JGK 型铜接线端头 Copper Connecting Terminals(JGK Type)

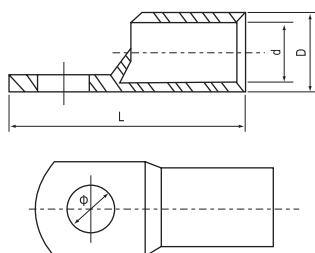
Material
Terminal Body: Copper
Plating: Tin



型号规格 Item No	尺寸Dimension(mm)			
	φ	D	d	L
SC(JGK)-1.5	φ 4.2, φ 5.2	3.5	1.8	18
SC(JGK)-2.5	φ 4.2, φ 5.2, φ 6.2,	4	2.5	19
SC(JGK)-4	φ 5.2, φ 6.2	4.8	3.1	21
SC(JGK)-6	φ 5.2, φ 6.2, φ 8.2	5.5	3.8	24
SC(JGK)-10	φ 6.2, φ 8.2	6.8	4.8	25.5
SC(JGK)-16	φ 6.2, φ 8.2, φ 10.5	7.5	5.5	30.5
SC(JGK)-25	φ 6.2, φ 8.2, φ 10.5	9	7	34
SC(JGK)-35	φ 6.2, φ 8.2, φ 10.5, φ 12.5	10.5	8.2	38
SC(JGK)-50	φ 8.2, φ 10.5, φ 12.5	12.5	9.8	45
SC(JGK)-70	φ 8.2, φ 10.5, φ 12.5	14.5	11.5	50
SC(JGK)-95	φ 10.5, φ 12.5	17.5	13.8	55.5
SC(JGK)-120	φ 12.5, φ 16.5	19.5	15.5	63
SC(JGK)-150	φ 12.5, φ 16.5	21	16.5	71
SC(JGK)-185	φ 16.5	23.5	18.8	78
SC(JGK)-240	φ 16.5	26.5	21	92
SC(JGK)-300	φ 16.5, φ 20.5	30	24	102
SC(JGK)-400	φ 16.5, φ 20.5	34	26.5	113
SC(JGK)-500	φ 16.5, φ 20.5	38	30	123
SC(JGK)-630	φ 20.5	45	35	135
SC(JGK)-800	φ 22.5	50	39	170
SC(JGK)-1000	φ 22.5	56	44	200

JGA 型铜接线端头 Copper Connecting Terminals(JGA Type)

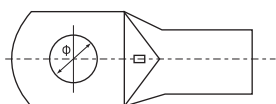
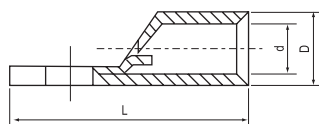
Material
Terminal Body: Copper
Plating: Tin



型号规格 Item No	尺寸Dimension(mm)			
	φ	D	d	L
SC(JGA)-1.5	φ 4.2, φ 5.2	3.5	1.8	18
SC(JGA)-2.5	φ 4.2, φ 5.2, φ 6.2,	4	2.5	19
SC(JGA)-4	φ 5.2, φ 6.2	4.8	3.1	21
SC(JGA)-6	φ 5.2, φ 6.2, φ 8.2	5.5	3.8	24
SC(JGA)-10	φ 6.2, φ 8.2	6.8	4.8	25.5
SC(JGA)-16	φ 6.2, φ 8.2, φ 10.5	7.5	5.5	30.5
SC(JGA)-25	φ 6.2, φ 8.2, φ 10.5	9	7	34
SC(JGA)-35	φ 6.2, φ 8.2, φ 10.5, φ 12.5	10.5	8.2	38
SC(JGA)-50	φ 8.2, φ 10.5, φ 12.5	12.5	9.8	45
SC(JGA)-70	φ 8.2, φ 10.5, φ 12.5	14.5	11.5	50
SC(JGA)-95	φ 10.5, φ 12.5	17.5	13.8	55.5
SC(JGA)-120	φ 12.5, φ 16.5	19.5	15.5	63
SC(JGA)-150	φ 12.5, φ 16.5	21	16.5	71
SC(JGA)-185	φ 16.5	23.5	18.8	78
SC(JGA)-240	φ 16.5	26.5	21	92
SC(JGA)-300	φ 16.5, φ 20.5	30	24	102
SC(JGA)-400	φ 16.5, φ 20.5	34	26.5	113
SC(JGA)-500	φ 16.5, φ 20.5	38	30	123
SC(JGA)-630	φ 20.5	45	35	135
SC(JGA)-800	φ 22.5	50	39	170
SC(JGA)-1000	φ 22.5	56	44	200

JGY 型铜接线端头 Copper Connecting Terminals(JGY Type)

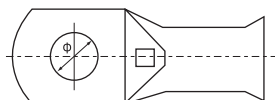
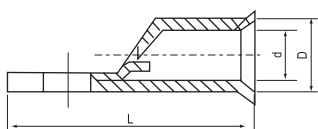
Material
Terminal Body: Copper
Plating: Tin



型号规格 Item No	尺寸Dimension(mm)			
	φ	D	d	L
SC(JGY)-1.5	φ 4.2, φ 5.2	3.5	1.8	18
SC(JGY)-2.5	φ 4.2, φ 5.2, φ 6.2,	4	2.5	19
SC(JGY)-4	φ 5.2, φ 6.2	4.8	3.1	21
SC(JGY)-6	φ 5.2, φ 6.2, φ 8.2	5.5	3.8	24
SC(JGY)-10	φ 6.2, φ 8.2	6.8	4.8	25.5
SC(JGY)-16	φ 6.2, φ 8.2, φ 10.5	7.5	5.5	30.5
SC(JGY)-25	φ 6.2, φ 8.2, φ 10.5	9	7	34
SC(JGY)-35	φ 6.2, φ 8.2, φ 10.5, φ 12.5	10.5	8.2	38
SC(JGY)-50	φ 8.2, φ 10.5, φ 12.5	12.5	9.8	45
SC(JGY)-70	φ 8.2, φ 10.5, φ 12.5	14.5	11.5	50
SC(JGY)-95	φ 10.5, φ 12.5	17.5	13.8	55.5
SC(JGY)-120	φ 12.5, φ 16.5	19.5	15.5	63
SC(JGY)-150	φ 12.5, φ 16.5	21	16.5	71
SC(JGY)-185	φ 16.5	23.5	18.8	78
SC(JGY)-240	φ 16.5	26.5	21	92
SC(JGY)-300	φ 16.5, φ 20.5	30	24	102
SC(JGY)-400	φ 16.5, φ 20.5	34	26.5	113
SC(JGY)-500	φ 16.5, φ 20.5	38	30	123
SC(JGY)-630	φ 20.5	45	35	135
SC(JGY)-800	φ 22.5	50	39	170
SC(JGY)-1000	φ 22.5	56	44	200

JGB 型铜接线端头 Copper Connecting Terminals(JGB Type)

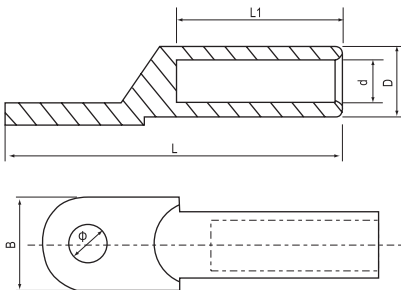
Material
Terminal Body: Copper
Plating: Tin



型号规格 Item No	尺寸Dimension(mm)			
	φ	D	d	L
SC(JGB)-1.5	φ 4.2, φ 5.2	3.5	1.8	18
SC(JGB)-2.5	φ 4.2, φ 5.2, φ 6.2,	4	2.5	19
SC(JGB)-4	φ 5.2, φ 6.2	4.8	3.1	21
SC(JGB)-6	φ 5.2, φ 6.2, φ 8.2	5.5	3.8	24
SC(JGB)-10	φ 6.2, φ 8.2	6.8	4.8	25.5
SC(JGB)-16	φ 6.2, φ 8.2, φ 10.5	7.5	5.5	30.5
SC(JGB)-25	φ 6.2, φ 8.2, φ 10.5	9	7	34
SC(JGB)-35	φ 6.2, φ 8.2, φ 10.5, φ 12.5	10.5	8.2	38
SC(JGB)-50	φ 8.2, φ 10.5, φ 12.5	12.5	9.8	45
SC(JGB)-70	φ 8.2, φ 10.5, φ 12.5	14.5	11.5	50
SC(JGB)-95	φ 10.5, φ 12.5	17.5	13.8	55.5
SC(JGB)-120	φ 12.5, φ 16.5	19.5	15.5	63
SC(JGB)-150	φ 12.5, φ 16.5	21	16.5	71
SC(JGB)-185	φ 16.5	23.5	18.8	78
SC(JGB)-240	φ 16.5	26.5	21	92
SC(JGB)-300	φ 16.5, φ 20.5	30	24	102
SC(JGB)-400	φ 16.5, φ 20.5	34	26.5	113
SC(JGB)-500	φ 16.5, φ 20.5	38	30	123
SC(JGB)-630	φ 20.5	45	35	135
SC(JGB)-800	φ 22.5	50	39	170
SC(JGB)-1000	φ 22.5	56	44	200

DT 型铜接线端头 Copper Connecting Terminals(DT Type)

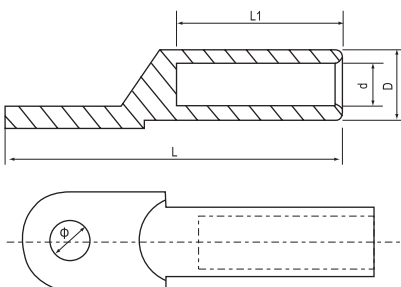
Material
Terminal Body: Copper



型号规格 Item No	尺寸Dimension(mm)					
	φ	D	d	L	L1	B
DT-10	8.5	9	5.3	62	28	16
DT-16	8.5	10	6.5	68	30	16
DT-25	8.5	11	7	70	33	18
DT-35	10.5	12	8.5	80	36	20.5
DT-50	10.5	14	9.5	85	38	23
DT-70	12.5	16	11.5	95	43	26
DT-95	12.5	18	13.5	104	46	28
DT-120	14.5	20	15	112	49	30
DT-150	14.5	22	16.5	120	51	34
DT-185	16.5	25	18.5	125	55	37
DT-240	16.5	27	21	136	60	40
DT-300	21	31	23.5	155	66	50
DT-400	21	34	26.5	170	75	50
DT-500	21	38	29	190	75	60
DT-630	21	45	35	220	85	80
DT-800	21	50	38	260	85	100

DL 型铝接线端头 Aluminium Connecting Terminals (DL Type)

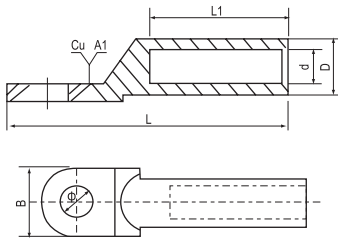
Material
Terminal Body: Aluminium



型号规格 Item No	尺寸Dimension(mm)				
	φ	D	d	L	L1
DL-10	8.5	9	6	68	28
DL-16	8.5	10	6	70	30
DL-25	8.5	12	7	75	34
DL-35	10.5	14	8.5	85	38
DL-50	10.5	16	9.8	90	40
DL-70	12.5	18	11.5	102	48
DL-95	12.5	21	13.5	112	51
DL-120	14.5	23	15	120	53
DL-150	14.5	25	16.5	126	56
DL-185	16.5	27	18.5	133	58
DL-240	16.5	30	21	140	60
DL-300	21	34	24	160	65
DL-400	21	38	26	170	70
DL-500	21	47	29	190	75
DL-630	21	54	35	220	85
DL-800	21	60	38	250	100

DTL-1型铜、铝接线端头 Copper Aluminium Connecting Terminals (DTL-1 Type)

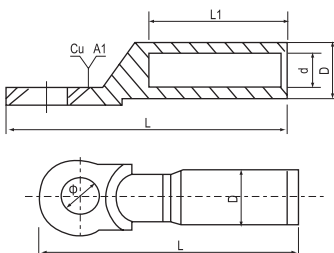
Material
Terminal Body: Copper,
Aluminium



型号规格 Item No	尺寸Dimension(mm)					
	φ	D	d	L	L1	B
DTL-1-10	8.5	10	6	68	28	16
DTL-1-16	8.5	11	6	70	30	16
DTL-1-25	8.5	12	7	75	34	18
DTL-1-35	10.5	14	8.5	85	38	20.5
DTL-1-50	10.5	16	9.8	90	40	23
DTL-1-70	12.5	18	11.5	102	48	26
DTL-1-95	12.5	21	13.5	112	50	28
DTL-1-120	14.5	23	15	120	53	30
DTL-1-150	14.5	25	16.5	126	56	34
DTL-1-185	16.5	27	18.5	133	58	37
DTL-1-240	16.5	30	21	140	60	40
DTL-1-300	21	34	23.5	160	65	50
DTL-1-400	21	38	27	170	70	55
DTL-1-500	21	47	29	225	75	60
DTL-1-630	21	54	35	245	80	80
DTL-1-800	21	60	38	270	90	100

DTL-2型铜、铝接线端头 Copper Aluminium Connecting Terminals (DTL-2 Type)

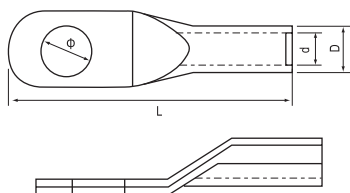
Material
Terminal Body: Copper,
Aluminium



型号规格 Item No	尺寸Dimension(mm)				
	φ	D	d	L	L1
DTL-2-16	13	16	5.5	87	42
DTL-2-25	13	16	6.5	87	42
DTL-2-35	13	16	8	87	42
DTL-2-50	13	20	9	87	43
DTL-2-70	13	20	11	87	43
DTL-2-95	13	20	12.5	87	43
DTL-2-120	13	25	13.5	111	60
DTL-2-150	13	25	15.5	111	60
DTL-2-185	13	32	17.5	116	60
DTL-2-240	13	32	19.5	116	60
DTL-2-300	13	34	22.5	120	62

AUS型铜接线端头 Copper Connecting Terminals(AUS Type)

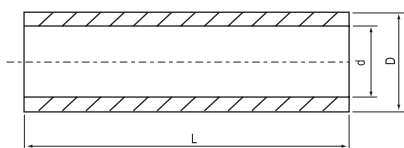
Material
Terminal Body: Copper
Plating: Tin



型号规格 Item No	尺寸Dimension(mm)			
	φ	D	d	L
AUS-6	φ 5.2, φ 6.2, φ 8.2	5.5	4.1	37.5
AUS-10	φ 6.2, φ 8.2	6.5	5.1	37.5
AUS-16	φ 6.2, φ 8.2, φ 10.5	8	6	47
AUS-25	φ 6.2, φ 8.2, φ 10.5	10.5	8	52
AUS-35	φ 6.2, φ 8.2, φ 10.5, φ 12.5	12.5	9.5	55
AUS-50	φ 8.2, φ 10.5, φ 12.5	14.5	10.9	69
AUS-70	φ 8.2, φ 10.5, φ 12.5	16.5	12.7	72
AUS-95	φ 10.5, φ 12.5	19	14.8	80
AUS-120	φ 12.5, φ 16.5	20.5	16.1	86
AUS-150	φ 12.5, φ 16.5	23.5	18	95
AUS-185	φ 16.5	26	20.6	100
AUS-240	φ 16.5	28	22.4	112
AUS-300	φ 16.5, φ 20.5	30	23.6	119
AUS-400	φ 16.5, φ 20.5	34	26	140
AUS-500	φ 16.5, φ 20.5, φ 22.5	38	29	150
AUS-630	φ 20.5, φ 22.5	45	35	160

GTY型铜接线管 Copper Connecting Tube (GTY Type)

Material
Terminal Body: Copper
Plating: Tin



型号规格 Item No	尺寸Dimension(mm)		
	D	d	L
GTY-1.5	3.5	2.5	20
GTY-2.5	4	3	20
GTY-4	4.8	3.5	20
GTY-6	5.5	4.1	25
GTY-10	6.7	5	30
GTY-16	7.5	5.8	35
GTY-25	9	7.2	40
GTY-35	10.5	8.5	45
GTY-50	12.5	10.1	50
GTY-70	14.5	11.7	55
GTY-95	17	13.8	60
GTY-120	19.5	15.9	65
GTY-150	20.5	16.7	70
GTY-185	23.5	19.1	75
GTY-240	26	21.4	80
GTY-300	30	24.6	85
GTY-400	34	27.4	90
GTY-500	38	30.8	100
GTY-630	45	35.8	110
GTY-800	50	40.4	150
GTY-1000	55	45	170

接插件 Open Barrel Terminals



型号规格 Item No	电线范围 Wire range	尺寸 Dimension(mm)			材质 Material
		D	W	L	
DJ431-3A	0.5-1.0	3.2	10.0	22.5	黄铜 Brass
DJ431-5A	0.5-1.0	5.2	10.0	22.5	
DJ431-6A	0.5-1.0	6.2	12.0	24.0	
DJ431-8B	1.0-1.5	8.2	15.0	26.0	
DJ431-10B	1.0-1.5	10.2	18.0	28.0	

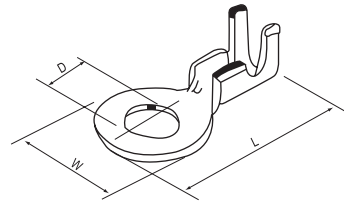


图 Fig	型号规格 Item No	电线范围 Wire range	尺寸 Dimension(mm)		材质 Material
			W	L	
A	DJ611-2.8x0.5A	0.5-0.8	2.8	21.0	黄铜 Brass
B	DJ611-6.3A	0.5-0.8	6.3	25.0	
B	DJ611-6.3B	1.0-1.5	6.3	25.0	
B	DJ612-6.3C	2.0-2.5	6.3	25.0	
C	DJ617-6.3B	1.0-1.5	6.3	19.2	

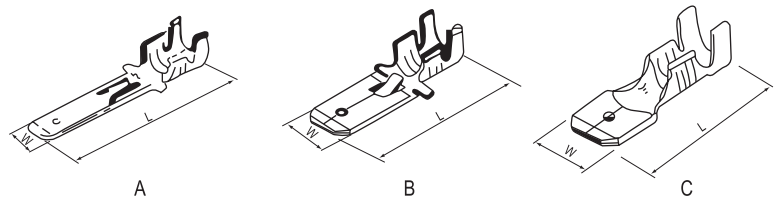
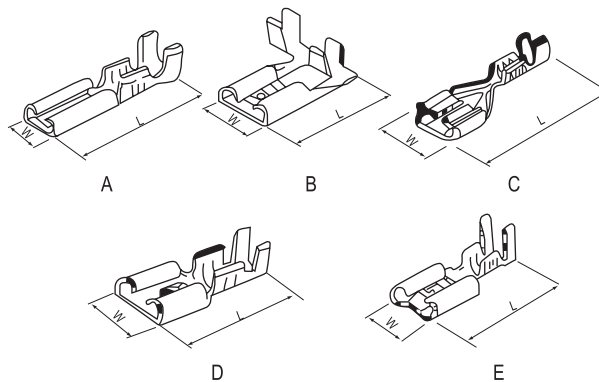
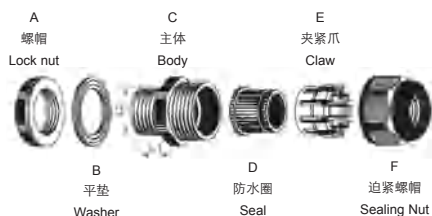


图 Fig	型号规格 Item No	电线范围 Wire range	尺寸 Dimension(mm)		材质 Material
			W	L	
A	DJ621-E2.8x0.5A	0.5-0.8	4.0	16.0	黄铜 Brass
B	DJ627-4.8A	0.5-0.8	5.7	14.0	
C	DJ622-D4.8B	1.0-1.5	5.7	19.5	
D	DJ621-J6.3A	0.5-0.8	7.5	19.5	
E	DJ622-D6.3B	1.0-1.5	8.0	17.0	



电缆防水接头 Cable Glands



产品材质: A.C.E.F部位采用UL认可的尼龙PA66, B.D部位采用丁腈橡胶。

螺纹规格: 公制(Metric), 德制(PG), 英制(G), 美制(NPT)。

颜色种类: 黑色(RAL9005)、浅灰(RAL7035)、银色(RAL7001), 特殊颜色可定做。

Material: Parts A, C, E are made of UL approved nylon PA66, parts B and D are made of nitrile butadiene rubber (NBR).

Thread spec.: Metric, PG, G, NPT.

Color: Black(RAL9005), light grey (RAL7035), silver(RAL7001) as well as special colors that can be designed at request.

产品型号 Model	螺纹规格 Thread Size	适用电缆 Cable Range (mm)	螺纹外径 Thread O. D. L2 (mm)	螺纹长度 Thread Length L1 (mm)	扳手直径 Spanner Size A & F (mm)	数量/袋 Qty/bag
PG7	PG7	3~6.5	12.5	9	18/16	100
PG9	PG9	4~8	15.2	9	22/19	100
PG11	PG11	5~10	18.6	9	24/22	100
PG13.5	PG13.5	6~11	20.4	10	27/24	100
PG16	PG16	10~13	22.5	10	30/27	100
PG19	PG19	12~15	24	10	30/28	100
PG21	PG21	13~18	28.3	12	35/33	100
PG25	PG25	16~21	30	12	37/35	50
PG29	PG29	18~25	37	12	45/42	50
PG36	PG36	22~32	47	15	58/52	20
PG42	PG42	32~38	54	18	62/58	20
PG48	PG48	37~44	59.3	18	70/64	20
PG63	PG63	42~50	71	30	83/77	10
M8	M8x1.25	2.5~4.5	8	8	13/12	100
M10	M10x1.5	3~6	10	8	15/13	100
M12	M12x1.5	3~6.5	12	9	18/16	100
M16	M16x1.5	4~8	16	9	22/19	100
M18	M18x1.5	5~10	18	9	24/22	100
M20	M20x1.5	6~11	20	10	27/24	100
M22	M22x1.5	10~13	22	10	30/27	100
M24	M24x1.5	12~15	24	10	30/28	100
M25	M25x1.5	12~15	25	11	31/28	100
M27	M27x1.5	13~18	27	12	35/33	100
M28	M28x1.5	13~18	28	12	35/33	100
M30	M30x1.5	16~21	30	12	37/35	50
M32	M32x1.5	16~21	32	12	38/35	50
M36	M36x1.5	18~25	36	12	45/42	50
M40	M40x1.5	22~32	40	15	52/52	20
M46	M46x1.5	22~32	46	15	58/52	20
M50	M50x1.5	32~38	50	18	62/58	20
M58	M58x1.5	37~44	58	18	70/64	20
M63	M63x1.5	37~44	63	18	72/64	20
M71	M71x1.5	42~50	71	30	83/77	10
MG12A	M12x1.5	4.5~8	12	9	18/19	100
MG16A	M16x1.5	6~10	16	15	22/22	100
MG20A	M20x1.5	9~14	20	15	27/27	100
MG25A	M25x1.5	13~18	25	15	33/33	100
MG32A	M32x1.5	18~25	32	15	41/41	20
MG40A	M40x1.5	24~30	40	20	50/50	20
MG50A	M50x1.5	31~41	50	22	60/62	20
MG63A	M63x1.5	44~51	63	25	75/75	20
MG90A	M90x2	66~77	90	25	110/110	5

接线端子

Terminal Blocks

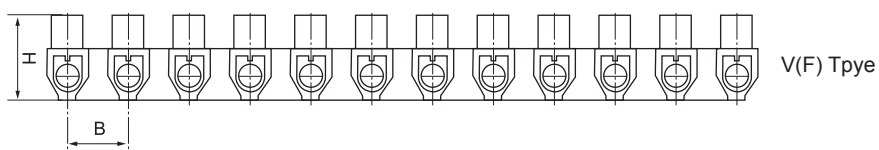
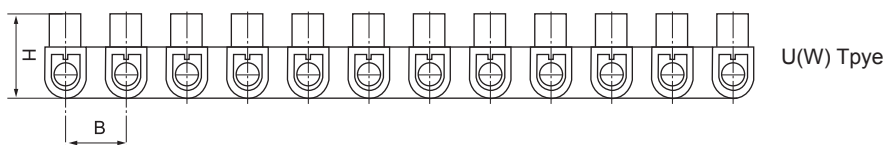
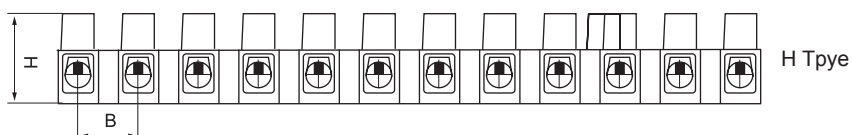
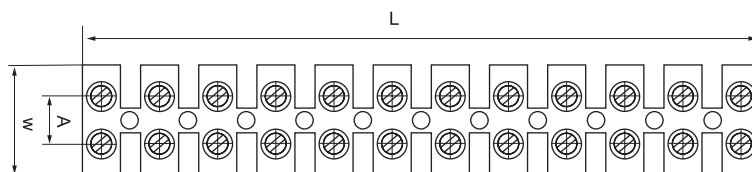


接线端子：H、U(W)、V(F)型。

材质：采用PA、PE或PP料制成。

Terminal blocks: H, U(W), V(F) type.

Material: Made from PA, PE or PP.



型号规格 Item No	尺寸Dimension(mm)					电线范围 Wire range mm ²	电压 Volt	电流 Amp	包装 Packing
	L	W	H	A	B				
3A	93	16	12	6	8	4	400V	3A	10PCS
6A	115	15.7	13	6.5	9.5	6	400V	6A	
10A	126	20.2	15.5	8.4	10.5	10	400V	10A	
16A	139	23	17.7	10.3	12	12	400V	16A	
20A	155	25	19.2	11.5	13.5	14	400V	20A	
30A	171	26	20.5	12	14.5	16	400V	30A	
60A	192	30	26	13.5	16.5	25	400V	60A	
80A	205	33	27	15	17	35	400V	80A	
100A	250	46	31	22	21	40	400V	100A	

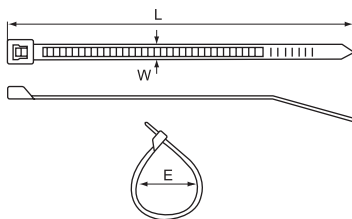
自锁式尼龙扎带 Self-Locking Nylon Cable Ties

材质：采用UL认可之尼龙66料制成，防火等级94V-2，耐酸、耐蚀、绝缘性良好，不易老化、承受力强。

颜色：标准色为本色(白色)，另备有黑色，特殊颜色欢迎订做。

Material: Nylon 66, 94V-2 certificated by UL, heat-resisting, erosion control, insulate well and not apt to age.

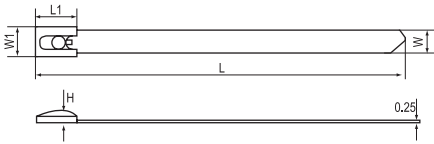
Color: Natural (or white, standard color), black and other colors are available as requested.



型号规格 Item No	长 L		宽 W(mm)	最大束线径E(mm) Max. bundle dia.	拉力Min tensile strength		包装 Packing
	Inch	mm			lbs	kgs	
3× 60	2 3/8"	60	2.5	11	18	8	100PCS & 1000PCS
3× 80	3 3/16"	80	2.5	16	18	8	
3× 100	4"	100	2.5	22	18	8	
3× 120	4 3/4"	120	2.5	30	18	8	
3× 150	6"	150	2.5	35	18	8	
3× 160	6 1/4"	160	2.5	40	18	8	
3× 200	8"	200	2.5	50	18	8	
4× 100	4"	100	3.5	22	40	18	100PCS & 500PCS
4× 120	4 3/4"	120	3.5	30	40	18	
4× 150	6"	150	3.5	35	40	18	
4× 180	7"	180	3.5	42	40	18	
4× 200	8"	200	3.5	50	40	18	
4× 250	10"	250	3.5	65	40	18	
4× 300	11 5/8"	300	3.5	80	40	18	
4× 370	14 1/2"	370	3.5	102	40	18	
5× 100	4"	100	4.8	22	50	22	100PCS & 250PCS
5× 120	4 3/4"	120	4.8	30	50	22	
5× 150	6"	150	4.8	35	50	22	
5× 180	7"	180	4.8	42	50	22	
5× 200	8"	200	4.8	50	50	22	
5× 250	10"	250	4.8	65	50	22	
5× 300	11 5/8"	300	4.8	82	50	22	
5× 350	13 3/4"	350	4.8	90	50	22	
5× 380	15"	380	4.8	102	50	22	
5× 400	15 3/4"	400	4.8	105	50	22	
5× 430	17 3/4"	430	4.8	120	50	22	
5× 450	17.7"	450	4.8	125	50	22	
5× 500	19 11/16"	500	4.8	150	50	22	
5× 530	20"	530	4.8	155	50	22	
8× 150	6"	150	7	35	120	55	100PCS & 250PCS
8× 180	7"	180	7	42	120	55	
8× 200	8"	200	7	50	120	55	
8× 250	10"	250	7	65	120	55	
8× 300	11 5/8"	300	7	82	120	55	
8× 350	13 3/4"	350	7	90	120	55	
8× 370	14 1/2"	370	7.6	102	120	55	
8× 400	15 3/4"	400	7	105	120	55	
8× 450	17 3/4"	450	7	118	120	55	
8× 500	19 11/16"	500	7	150	120	55	
8× 550	21 4/5"	550	7	165	120	55	
10× 400	15 3/4"	400	8.8	105	175	80	100PCS
10× 450	17 3/4"	450	8.8	130	175	80	
10× 500	19 11/16"	500	8.8	150	175	80	
10× 550	21 11/16"	550	8.8	165	175	80	
10× 650	25 9/16"	650	8.8	190	175	80	
10× 760	29 1/2"	760	8.8	220	175	80	
10× 800	31 1/2"	800	8.8	230	175	80	
10× 900	36 1/4"	900	8.8	265	200	90	
10× 1020	40 1/6"	1020	8.8	295	200	90	
10× 1200	48"	1200	8.8	345	200	90	
12× 650	25 3/5"	650	11	165	250	114	100PCS
12× 760	35 1/2"	760	11	225	250	114	

不锈钢扎带

Stainless Steel Cable Ties



不锈钢电缆扎带的技术性能完全符合IEC92号《船舶电气设备》和GB1113-85《包塑金属电缆扎带》等有关规定。

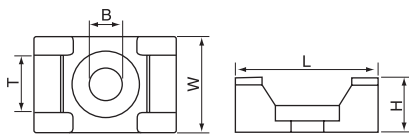
扎带本体材质由304不锈钢带精制而成。适用于露天、潮湿、高温等室内外场所捆扎电缆，具有抗磨、抗腐蚀、抗放射和防火性能。

扎带宽度为4.6mm和8.0mm，可订制任何长度。

Material: 304# Steel

Any length can be available.

规格(宽×长) Specification (W×L) (mm)	长 Length		厚度 Thickness (mm)	最大捆径(Φ) Max. bundled diameter (mm)	拉力范围 Tensile strength		包装(支/袋) Package (pcs/bag)
	Inch	mm			LB	KG	
4.6× 100	4"	100	0.25	23	122	55	100
4.6× 150	6"	150	0.25	38	122	55	100
4.6× 200	8"	200	0.25	52	122	55	100
4.6× 250	10"	250	0.25	68	122	55	100
4.6× 300	12"	300	0.25	84	122	55	100
4.6× 350	14"	350	0.25	103	122	55	100
4.6× 400	16"	400	0.25	114	122	55	100
4.6× 450	18"	450	0.25	118	122	55	100
4.6× 500	20"	500	0.25	148	122	55	100
4.6× 600	24"	600	0.25	178	122	55	100
4.6× 700	28"	700	0.25	198	122	55	100
4.6× 800	32"	800	0.25	240	122	55	100
4.6× 900	36"	900	0.25	270	122	55	100
4.6× 1000	40"	1000	0.25	305	122	55	100
4.6× 1200	48"	1200	0.25	371	122	55	100
4.6× 1300	52"	1300	0.25	403	122	55	100
8.0× 150	6"	150	0.25	38	180	80	100
8.0× 175	7"	175	0.25	42	180	80	100
8.0× 200	8"	200	0.25	52	180	80	100
8.0× 250	10"	250	0.25	68	180	80	100
8.0× 300	12"	300	0.25	84	180	80	100
8.0× 350	14"	350	0.25	103	180	80	100
8.0× 400	16"	400	0.25	114	180	80	100
8.0× 450	18"	450	0.25	118	180	80	100
8.0× 500	20"	500	0.25	148	180	80	100
8.0× 600	24"	600	0.25	178	180	80	100
8.0× 800	32"	800	0.25	198	180	80	100
8.0× 1000	40"	1000	0.25	240	180	80	100
8.0× 1100	44"	1100	0.25	270	180	80	100
8.0× 1200	48"	1200	0.25	305	180	80	100
8.0× 1300	52"	1300	0.25	371	180	80	100
8.0× 1400	56"	1400	0.25	403	180	80	100



扎线固定座 Saddle Type Tie Mounts

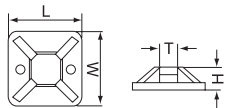
材质：UL合格之尼龙66(本色)或PE，防火等级94V-2。

用途：先将固定座以螺丝固定，再以扎线带绕绑电线，马鞍形设计使电线易于固定。

Material: UL approved nylon 66 or PE, 94V-2.

Application: Saddle design provide maximum stability to wire bundles. To apply, simply fix mount with a screw and secure wire bundles with MG nylon cable ties.

型号规格 Item No	长 L(mm)	宽 W(mm)	高 H(mm)	带孔 T	固定孔 B	包装 Packing
MG-0	9	7	5	5	4	1000PCS/Bag
MG-1	15	10	7	7	4	
MG-2	22	15	9	9	5	
MG-2L	22	15	9	9	6	



定位片 Tie Mounts

材质：采用UL认可之尼龙66制成，防火等级94V-2。背附进口双面胶，绝缘性能好、耐久性、不易老化。

使用方法：将定位片背面双面胶撕开，贴于机板固定，再用扎带捆扎电线。

用途：省时、简便、供面板不可钻孔时使用。

Material: UL approved nylon 66, 94V-2, with imported adhesive sticker. Good insulation, long lasting and uneasy to age.

Usage: Remove the cover of the adhesive and stick the piece properly. then put in cable tie for using.

Application: Used where hole-drilling is not allowed. Easy and time-saving.

型号规格 Item No	长×宽 L×W(mm)	高 H(mm)	带孔 T(mm)	包装 Packing
MG-20	20×20	6.1	5	100PCS & 1000PCS/Bag
MG-25	25×25	7.5	6.2	100PCS & 500PCS/Bag
MG-30	30×30	8.7	6.4	100PCS & 500PCS/Bag
MG-40	40×40	6.4	10.8	100PCS & 250PCS/Bag



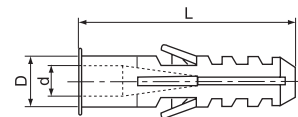
膨胀管 Expand Nails

材质：采用PE料制成。

颜色：白色，可订制其它颜色。

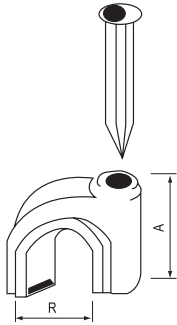
Material: PE

Color: White, other colors are available as requested



型号规格 Item No	长 L(mm)	外径 D(mm)	内径 d(mm)	包装 Packing
MG-6	29.8	5.9	4.9	1000PCS/Bag
MG-8	38.6	7.9	5.3	
MG-10	42.7	9.9	5.8	500PCS/Bag
MG-12	47.9	11.8	6.3	

圆形固定夹 Circle Fixing Clips



材质：采用PP料制成，附钢钉。

特点：用电线置于卡内，用铁锤将钢钉钉于墙壁上即可将电线固定。

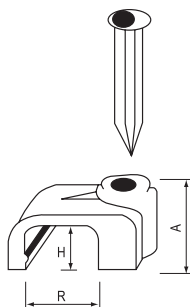
用途：一般室内配线固定电线用。

Material: PP, steel nail.

How to use: Put the cable under the clip and hammer the nail into the wall to secure the cable.

Application: Securing of cables for general indoor wiring.

型号规格 Item No	高 A(mm)	圆径 R(mm)	钢钉 Nail(mm)	包装 Packing
4mm	5.3	4	1.7× 15	100PCS/Bag & 1000PCS/Bag
5mm	6.5	5	1.7× 15	
6mm	8.1	6	1.7× 17	
7mm	8.7	7	1.8× 18	
8mm	9.6	8	1.9× 18	
9mm	10.7	9	2.0× 20	
10mm	11.7	10	2.1× 23	
12mm	12.8	12	2.3× 23	
14mm	14.9	14	2.3× 25	
16mm	16.9	16	2.3× 30	
18mm	20.8	18	2.5× 33	
20mm	23.5	20	2.8× 38	
22mm	25.0	22	2.8× 40	
25mm	27.7	25	2.8× 45	
30mm	33.0	30	3.0× 45	
32mm	35.0	32	3.2× 55	
35mm	39.0	35	3.2× 58	
40mm	45.0	40	3.5× 60	



方形固定夹 Square Fixing Clips

材质：采用PP料制成，附钢钉。

特点：用电线置于卡内，用铁锤将钢钉钉于墙壁上即可将电线固定。

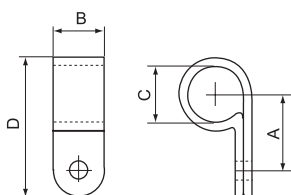
用途：一般室内配线固定电线用。

Material: PP, steel nail.

How to use: Put the cable under the clip and hammer the nail into the wall to secure the cable.

Application: Securing of cables for general indoor wiring.

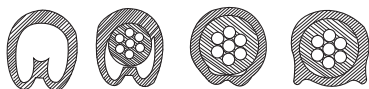
型号规格 Item No	高 A(mm)	内径		钢钉 Nail(mm)	包装 Packing
		H(mm)	R(mm)		
4mm	6.0	3.8	4	1.7× 15	100PCS/Bag & 1000PCS/Bag
5mm	6.0	3.8	5	1.7× 15	
6mm	6.5	4.1	6	1.7× 17	
7mm	7.0	4.7	7	1.9× 18	
8mm	7.5	5.0	8	2.05× 20	
9mm	8.2	5.4	9	2.05× 23	
10mm	8.6	5.7	10	2.3× 23	
12mm	9.0	6.1	12	2.3× 25	
14mm	11.2	6.5	14	2.3× 30	



R型固定夹 R Type Cable Clamps

材质：采用UL认可尼龙66料制成，防火等级94V-2。 Material: Nylon 66 94V-2 agreed by uL
 使用方法：将电线置于固定扣内，再以螺丝固定。 How to use: Put cable in, fix by screw.

型号规格 Item No	A (mm)	圆径 R(mm)	C(mm)		钢钉 Nail(mm)	包装 Packing
			mm	Inch		
1/8R	9.5	9.6	3.2	1/8"	19.8	100PCS/Bag & 1000PCS/Bag
3/16R	9.6	9.6	4.8	3/16"	19.8	
1/4R	12.0	10.0	6.35	1/4"	22.0	
5/16R	12.0	10.0	7.9	5/16"	22.0	
3/8R	12.5	12.0	9.5	3/8"	24.0	
1/2R	15.2	12.0	12.7	1/2"	31.0	
5/8R	18.2	12.0	15.8	5/8"	34.3	
3/4R	18.2	12.0	19.4	3/4"	35.0	
1R	22.0	12.0	25.4	1"	43.0	
17/16R	24.0	12.0	27.5	17/16"	50.0	
5/4R	26.2	12.0	31.8	1 1/4"	46.2	
3/2R	30.0	12.0	36.7	1 1/2"	50.0	

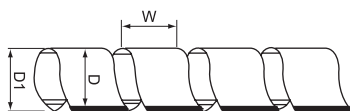
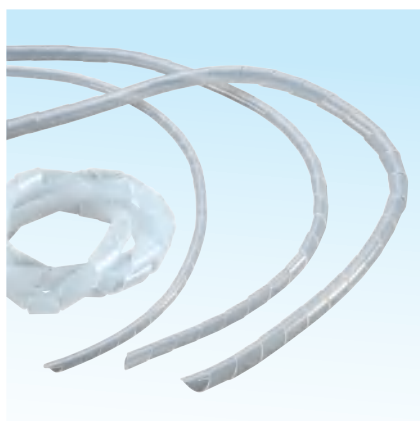


号码管 Cable Markers

材质：采用优质的PVC制成，能防止油性及其他物质侵蚀，耐温至85℃。
 构造：号码管内部成凹型，具有弹性。内径能随着电线大小而伸缩。

Material: Made from PVC, oil and erosion control, heat resisting up to 85℃.
 Structure: The inside is hollow, but elastic, the diameter can change with the needed wire.

型号规格 Item No	适用电线Approx wire		号码 markers	包装 Packing
	sq(平方)	mm		
EC-0	0.75-1.5	0.75-3	0~9 A~Z +/- \ *	100PCS/COIL & 1000PCS/COIL
EC-1	2.5	2.6-4.2		
EC-2	4.2	3.6-7.4		
EC-3	6-10	6-10		
EC-J	4	3.6-7.2		



卷式保护带(缠绕管) Spiral Wrapping Bands

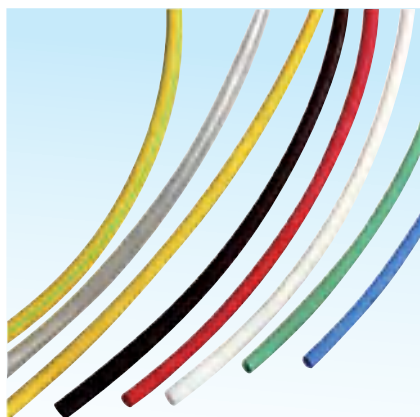
材质：采用PE料制成。
 使用方法：先用保证带固定起点一端，然后按顺时针方向环绕束紧，即可将电线束为一体。
 用途：作为保护电线不受磨损及绝缘用，并可改进电线弯曲的美观。

Material: PE.
 Usage: Fix one end with safety belt first, then circle the wires clockwise to make them tighten.
 Application: A protection wear for electric wires, and make them insulation and lock nice.

型号规格 Item No	内径 D	外径 D1	螺距 W	结束可能范围 Wrapping range(mmΦ)	包装 Packing
Φ 6	4	6	7.0	4× 50	10m/COIL
Φ 8	6	8	10.8	6× 60	
Φ 10	7.5	10	11.4	7.5× 60	
Φ 12	9	12	13.9	9× 65	
Φ 16	13	16	15.0	12× 70	
Φ 20	16	20	18.2	15× 100	
Φ 25	21	25	19.6	20× 130	

热缩管

Heat Shrink Tube



- 1、热缩管具有较好的阻燃性，且不含卤素，燃烧时无有害气体产生，低烟、无滴落。
- 2、不含重金属，符合SGS标准。安全标准：UL224 VW-1 C-UL CSA C 22.2OFT RoHS

1. DOSSY heat shrink tube boasts very good flame retardation and it does not contain halogen, so it will produce no hazardous gases when it is burnt, with low smoke and no drop.

2. It does not contain heavy metal and conforms to SGS standard.

Safety standard: UL224 VW-1 C-UL CSA C 22.2OFT RoHS

型号规格 Item No	收缩前尺寸(mm) Dimension before shrinking		收缩后尺寸(mm) Dimension after shrinking		标准包装(米/盘) Standard packaging (m/disc)	适用范围 Application (mm)
	内径Internal diameter	壁厚Wall thickness	内径Internal diameter	壁厚Wall thickness		
φ 0.8	0.9± 0.2	0.20± 0.05	0.40± 0.1	0.32± 0.05	200	0.6~0.8
φ 1.0	1.2± 0.3	0.20± 0.05	0.48± 0.1	0.32± 0.05	200	0.75~0.9
φ 1.5	1.7± 0.3	0.20± 0.05	0.73± 0.1	0.32± 0.05	200	0.95~1.4
φ 2.0	2.2± 0.3	0.25± 0.05	0.98± 0.1	0.32± 0.05	200	1.1~1.8
φ 2.5	2.6± 0.3	0.25± 0.05	1.23± 0.2	0.35± 0.05	200	1.35~2.3
φ 3.0	3.2± 0.4	0.25± 0.05	1.45± 0.2	0.35± 0.05	200	1.6~2.7
φ 3.5	3.6± 0.4	0.25± 0.05	1.72± 0.2	0.35± 0.05	200	1.85~3.2
φ 4.0	4.2± 0.4	0.25± 0.05	1.96± 0.2	0.35± 0.05	200	2.1~3.6
φ 4.5	4.6± 0.4	0.25± 0.05	2.20± 0.2	0.35± 0.05	200	2.35~4.0
φ 5.0	5.2± 0.4	0.25± 0.05	2.48± 0.2	0.35± 0.05	200	2.6~4.5
φ 6.0	6.2± 0.4	0.28± 0.15	2.96± 0.3	0.45± 0.15	200	3.1~5.4
φ 7.0	7.2± 0.4	0.28± 0.15	3.48± 0.3	0.45± 0.15	100	3.7~6.3
φ 8.0	8.2± 0.5	0.28± 0.15	3.95± 0.3	0.45± 0.15	100	4.2~7.2
φ 9.0	9.2± 0.5	0.30± 0.15	4.40± 0.3	0.50± 0.15	100	4.7~8.0
φ 10	10.2± 0.5	0.30± 0.15	4.90± 0.3	0.50± 0.15	100	5.2~9.0
φ 11	11.2± 0.5	0.30± 0.15	5.40± 0.3	0.50± 0.15	100	5.7~10
φ 12	12.2± 0.5	0.30± 0.15	5.90± 0.5	0.50± 0.15	100	6.2~11
φ 13	13.2± 0.5	0.33± 0.15	6.40± 0.5	0.50± 0.15	100	6.7~12
φ 14	14.2± 0.5	0.35± 0.15	6.90± 0.5	0.50± 0.15	100	7.3~13
φ 15	15.2± 0.6	0.38± 0.15	7.40± 0.5	0.60± 0.15	100	7.8~14
φ 16	16.2± 0.6	0.38± 0.15	7.90± 0.5	0.60± 0.15	100	8.3~15
φ 17	17.2± 0.6	0.38± 0.15	8.40± 0.5	0.60± 0.15	100	8.8~16
φ 18	18.2± 0.6	0.40± 0.15	8.90± 0.5	0.60± 0.15	100	9.3~17
φ 20	20.2± 0.8	0.40± 0.20	9.90± 0.5	0.70± 0.20	100	11.4~19
φ 22	22.2± 0.8	0.42± 0.20	10.80± 1.0	0.70± 0.20	100	12.4~21
φ 25	25.3± 0.8	0.45± 0.20	12.30± 1.0	0.70± 0.20	50	12.8~24
φ 28	28.3± 0.8	0.45± 0.20	13.50± 1.0	0.70± 0.20	50	14.4~29
φ 30	30.2± 0.8	0.45± 0.20	14.70± 1.0	0.70± 0.20	50	16~29
φ 35	35.2± 0.8	0.50± 0.20	17.30± 1.0	0.80± 0.20	50	18~34
φ 40	40.0± 1.0	0.50± 0.20	19.80± 1.0	0.80± 0.20	50	21~39
φ 50	50.0± 1.0	0.50± 0.20	24.80± 1.0	0.80± 0.20	50	26~49
φ 60	60.0± 1.0	0.60± 0.20	29.80± 1.0	0.80± 0.20	25	35~55
φ 70	70.0± 1.0	0.65± 0.20	34.00± 2.0	1.00± 0.20	25	40~65
φ 80	80.0± 1.0	0.65± 0.20	39.00± 2.0	1.00± 0.20	25	45~75
φ 90	90.0± 1.0	0.65± 0.20	44.00± 2.0	1.00± 0.20	25	50~88
φ 100	100.0± 2.0	0.65± 0.20	49.00± 2.0	1.00± 0.20	25	55~95
φ 120	120.0± 2.0	0.70± 0.20	59.00± 2.0	1.20± 0.20	25	65~115
φ 150	150.0± 2.0	0.70± 0.20	74.00± 2.0	1.20± 0.20	25	80~145
φ 180	180.0± 2.0	0.70± 0.20	88.00± 2.0	1.20± 0.20	25	95~175

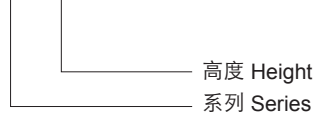
SM/TSM 型绝缘子 Insulator (SM/TSM Type)



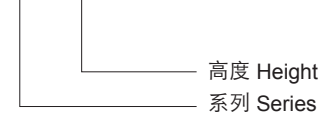
SM-20

SM-76

SM - □□



TSM - □□



工作性能 Characteristics

- 工作温度 Operating temperature: $-40^{\circ}\text{C} \sim +140^{\circ}\text{C}$
- 嵌件 Insert: 黄铜, 钢镀锌 Brass, steel with Zn plating
- 材质 Material: 不饱和聚酯树脂玻璃纤维增强模压塑料 BMC (bough moulding compound) SMC (sheet moulding compound)
- 颜色、嵌件、材质性能可依客户需求定制。
Colour, insert, material in capability accordance with customer needs

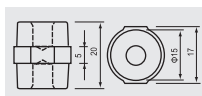
外观尺寸 Outline (mm)



TSM-20

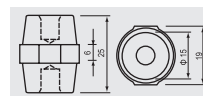
TSM-70

SM-20



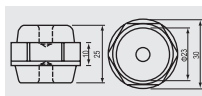
Tensile strength (LBS)	300
Voltage withstand (KV)	5
Tougue strength (FT LBS)	4
Screw (mm)	5
Screw depth (mm)	7

SM-25S



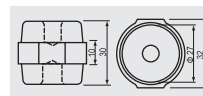
Tensile strength (LBS)	400
Voltage withstand (KV)	6
Tougue strength (FT LBS)	5
Screw (mm)	6
Screw depth (mm)	8

SM-25



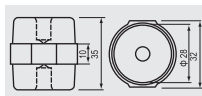
Tensile strength (LBS)	500
Voltage withstand (KV)	6
Tougue strength (FT LBS)	6
Screw (mm)	6
Screw depth (mm)	9

SM-30



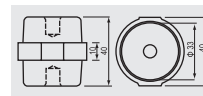
Tensile strength (LBS)	550
Voltage withstand (KV)	8
Tougue strength (FT LBS)	8
Screw (mm)	8
Screw depth (mm)	11

SM-35



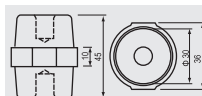
Tensile strength (LBS)	600
Voltage withstand (KV)	10
Tougue strength (FT LBS)	10
Screw (mm)	8
Screw depth (mm)	11

SM-40



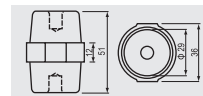
Tensile strength (LBS)	650
Voltage withstand (KV)	12
Tougue strength (FT LBS)	12
Screw (mm)	8
Screw depth (mm)	11

SM-45



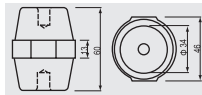
Tensile strength (LBS)	1000
Voltage withstand (KV)	14
Tougue strength (FT LBS)	20
Screw (mm)	8
Screw depth (mm)	11

SM-51



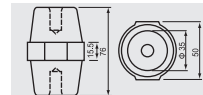
Tensile strength (LBS)	1000
Voltage withstand (KV)	15
Tougue strength (FT LBS)	20
Screw (mm)	8
Screw depth (mm)	14

SM-60



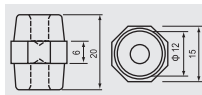
Tensile strength (LBS)	1200
Voltage withstand (KV)	20
Tougue strength (FT LBS)	35
Screw (mm)	10
Screw depth (mm)	15

SM-76



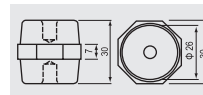
Tensile strength (LBS)	1500
Voltage withstand (KV)	25
Tougue strength (FT LBS)	40
Screw (mm)	10
Screw depth (mm)	20

TSM-20



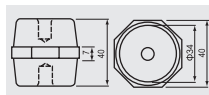
Tensile strength (LBS)	300
Voltage withstand (KV)	5
Tougue strength (FT LBS)	4
Screw (mm)	5
Screw depth (mm)	7

TSM-30



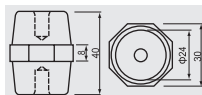
Tensile strength (LBS)	500
Voltage withstand (KV)	8
Tougue strength (FT LBS)	8
Screw (mm)	6
Screw depth (mm)	10

TSM-401 (mm)



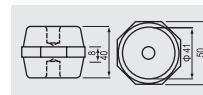
Tensile strength (LBS)	700
Voltage withstand (KV)	8
Tougue strength (FT LBS)	20
Screw (mm)	8
Screw depth (mm)	13

TSM-402



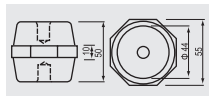
Tensile strength (LBS)	550
Voltage withstand (KV)	8
Tougue strength (FT LBS)	10
Screw (mm)	6
Screw depth (mm)	13

TSM-40



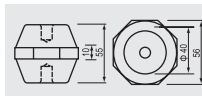
Tensile strength (LBS)	1000
Voltage withstand (KV)	8
Tougue strength (FT LBS)	30
Screw (mm)	10
Screw depth (mm)	14

TSM-50



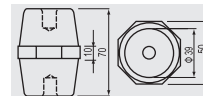
Tensile strength (LBS)	1500
Voltage withstand (KV)	15
Tougue strength (FT LBS)	40
Screw (mm)	10
Screw depth (mm)	17

TSM-55



Tensile strength (LBS)	2000
Voltage withstand (KV)	15
Tougue strength (FT LBS)	50
Screw (mm)	10
Screw depth (mm)	17

TSM-70



Tensile strength (LBS)	1500
Voltage withstand (KV)	25
Tougue strength (FT LBS)	40
Screw (mm)	10
Screw depth (mm)	17

端子新产品

Terminal New Products

尼龙预绝缘端头
Nylon Insulated Terminals



尼龙圆形预绝缘端头(带铜套)
Nylon Insulated Ring Terminals
(With Copper Sleeve)



叉形预绝缘端头(带铜套)
Insulated Spade Terminals
(With Copper Sleeve)



圆形预绝缘端头(带铜套)
Insulated Ring Terminals
(With Copper Sleeve)



母预绝缘端头(带铜套)
Insulated Female Disconnects
(With Copper Sleeve)



公预绝缘端头(带铜套)
Insulated Male Disconnects
(With Copper Sleeve)



肩背形公母预绝缘端头(带铜套)
Insulated Piggy Back Disconnects
(With Copper Sleeve)



子弹形公母预绝缘端头(带铜套)
Insulated Bullet Male and Female
Disconnects (With Copper Sleeve)



热缩端头
Heat Shrink Terminals



热缩端头
Heat Shrink Terminals



镀金端头
Gold Plated Terminals



二路连接接头
2 Ways Bullet Receptade Disconnects



三路/四路连接接头
3 Ways/4 Ways Connecting
Disconnects



特殊中间接头
Special Butt Disconnects



快接连接接头
Quick Connecting Disconnects



DOSSY 浙江丰登电气有限公司
Zhejiang Fengdeng Electric Co.,Ltd.

ADD: 浙江省乐清市柳市七里港大道198号
No.198 Qiligang Str. Liushi Town, Yueqing City, Zhejiang ,China
TEL: 0086-577-61678977 61677798
FAX: 0086-577-61677700 E-mail: info@dossyfan.com chenny@dossyfan.com
Http://acfan.en.alibaba.com