

Test Report

Report No. SCL011020344001

Page 1 of 7

Applicant SICHUAN HUACAN ELECTRONIC CO., LTD

Address HUITONG MANSION, TAISHAN ROAD, DEYANG, SICHUAN, CHINA

The following sample(s) and sample information was/were submitted and identified by/on the behalf of the client

Sample Name Lead-free tin circuit board
 Material FR-4
 Sample Received Date Mar. 22, 2016
 Testing Period Mar. 22, 2016 to Mar. 25, 2016

Test Requested As specified by client, to test Lead (Pb), Cadmium (Cd), Mercury (Hg), Hexavalent Chromium(Cr(VI)), Polybrominated Biphenyls(PBBs), Polybrominated Diphenyl Ethers(PBDEs), Phthalates(DBP, BBP, DEHP, DIBP) in the submitted sample(s).

Test Method Please refer to the following page(s).

Test Result(s) Please refer to the following page(s).

Conclusion

Tested Sample	According to directive	Result
Submitted Sample	RoHS Directive 2011/65/EU with amendment (EU) 2015/863	Pass

Pass means that the results shown on the report do not exceed the limits set by RoHS Directive 2011/65/EU with amendment (EU) 2015/863.

Sky Liu

Reviewed by *Emma Xiao*

Danny Liu

Date Mar. 25, 2016

Danny Liu
Technical Manager

No. R212669535



Centre Testing International Group Co., Ltd. Hongwei Industrial Zone, Bao'an 70 District, Shenzhen, Guangdong, China

Test Report

Report No. SCL011020344001

Page 2 of 7

Test Method

Test Item(s)	Test Method	Measured Equipment(s)
Lead (Pb)	IEC 62321-5:2013 Ed.1.0	ICP-OES
Cadmium (Cd)	IEC 62321-5:2013 Ed.1.0	ICP-OES
Mercury (Hg)	IEC 62321-4:2013 Ed.1.0	ICP-OES
Hexavalent Chromium(Cr(VI))	IEC 62321:2008 Ed.1 Annex C	UV-Vis
Polybrominated Biphenyls(PBBs)	IEC 62321-6:2015	GC-MS
Polybrominated Diphenyl Ethers(PBDEs)	IEC 62321-6:2015	GC-MS
Phthalates(DBP, BBP, DEHP, DIBP)	Refer to EN 14372:2004(E)	GC-MS

Test Report

Report No. SCL011020344001

Page 3 of 7

Test Result(s)

Tested Item(s)	Result	MDL	Limit
Lead (Pb)	N.D.	2 mg/kg	1000 mg/kg
Cadmium (Cd)	N.D.	2 mg/kg	100 mg/kg
Mercury (Hg)	N.D.	2 mg/kg	1000 mg/kg
Hexavalent Chromium (Cr(VI))	N.D.	2 mg/kg	1000 mg/kg

Tested Item(s)	Result	MDL	Limit
Polybrominated Biphenyl(PBBs)			
Monobromobiphenyl	N.D.	5 mg/kg	1000 mg/kg
Dibromobiphenyl	N.D.	5 mg/kg	
Tribromobiphenyl	N.D.	5 mg/kg	
Tetrabromobiphenyl	N.D.	5 mg/kg	
Pentabromobiphenyl	N.D.	5 mg/kg	
Hexabromobiphenyl	N.D.	5 mg/kg	
Heptabromobiphenyl	N.D.	5 mg/kg	
Octabromobiphenyl	N.D.	5 mg/kg	
Nonabromobiphenyl	N.D.	5 mg/kg	
Decabromobiphenyl	N.D.	5 mg/kg	

Tested Item(s)	Result	MDL	Limit
Polybrominated Diphenyl Ethers(PBDEs)			
Monobromodiphenyl ether	N.D.	5 mg/kg	1000 mg/kg
Dibromodiphenyl ether	N.D.	5 mg/kg	
Tribromodiphenyl ether	N.D.	5 mg/kg	
Tetrabromodiphenyl ether	N.D.	5 mg/kg	
Pentabromodiphenyl ether	N.D.	5 mg/kg	
Hexabromodiphenyl ether	N.D.	5 mg/kg	
Heptabromodiphenyl ether	N.D.	5 mg/kg	
Octabromodiphenyl ether	N.D.	5 mg/kg	
Nonabromodiphenyl ether	N.D.	5 mg/kg	
Decabromodiphenyl ether	N.D.	5 mg/kg	

Test Report

Report No. SCL01I020344001

Page 4 of 7

Tested Item(s)	Result	MDL	Limit
Phthalates			
Dibutyl phthalate(DBP) CAS#:84-74-2	N.D.	50 mg/kg	1000 mg/kg
Butylbenzyl phthalate(BBP) CAS#:85-68-7	N.D.	50 mg/kg	1000 mg/kg
Di-2-ethylhexyl phthalate(DEHP) CAS#:117-81-7	N.D.	50 mg/kg	1000 mg/kg
Diisobutyl phthalate(DIBP) CAS#:84-69-5	N.D.	50 mg/kg	1000 mg/kg

Tested Sample/Part Description PCB(Tested as a whole)

Remark:

- The sample(s) had been dissolved totally tested for Lead, Cadmium, Mercury.
- The sample(s) was tested as a whole, because it's impossible to disassemble or separate it by current equipment and technology. The result(s) shown on this report may be different from the content of any homogeneous material.
- MDL = Method Detection Limit
- N.D. = Not Detected (<MDL)
- mg/kg = ppm = parts per million

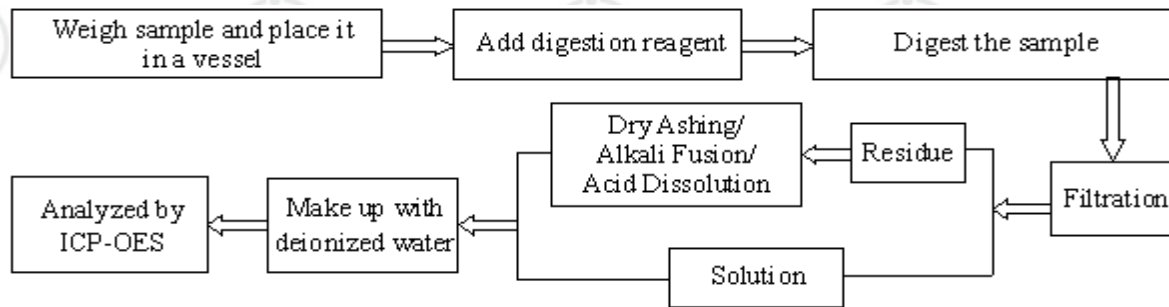
Test Report

Report No. SCL011020344001

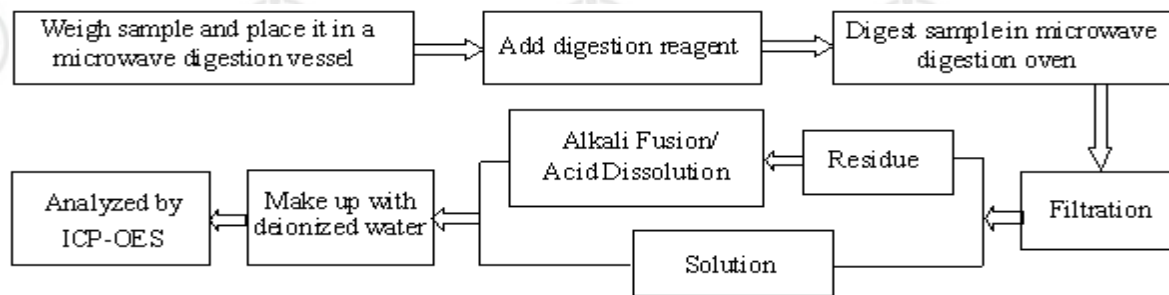
Page 5 of 7

Test Process

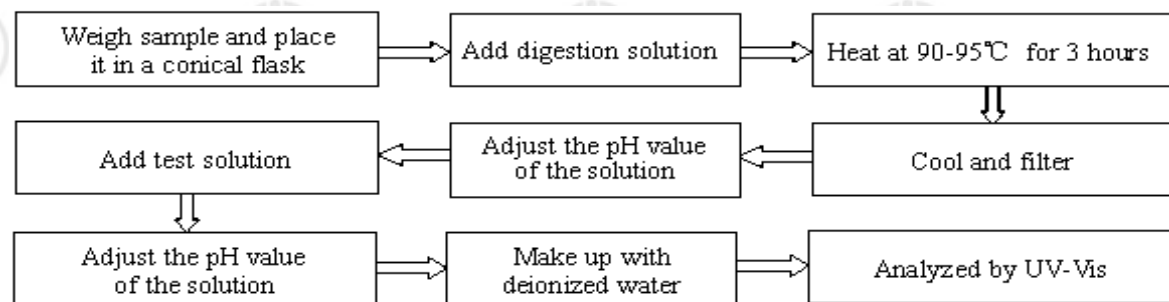
1. Lead (Pb), Cadmium (Cd)



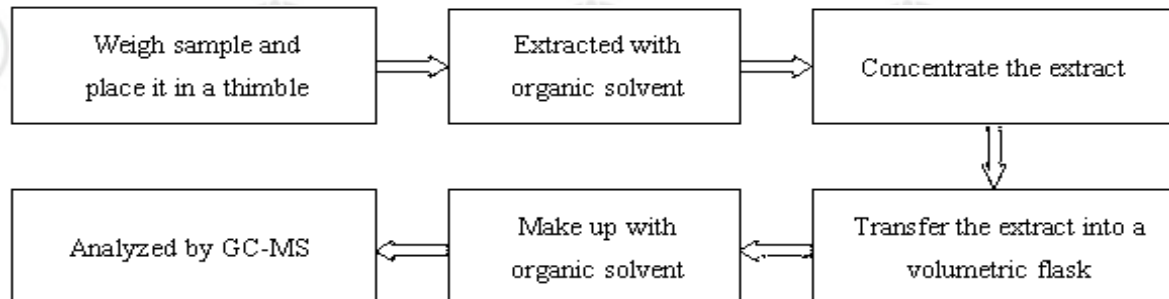
2. Mercury (Hg)



3. Hexavalent Chromium(Cr(VI))



4. Polybrominated Biphenyls(PBBs) , Polybrominated Diphenyl Ethers(PBDEs)

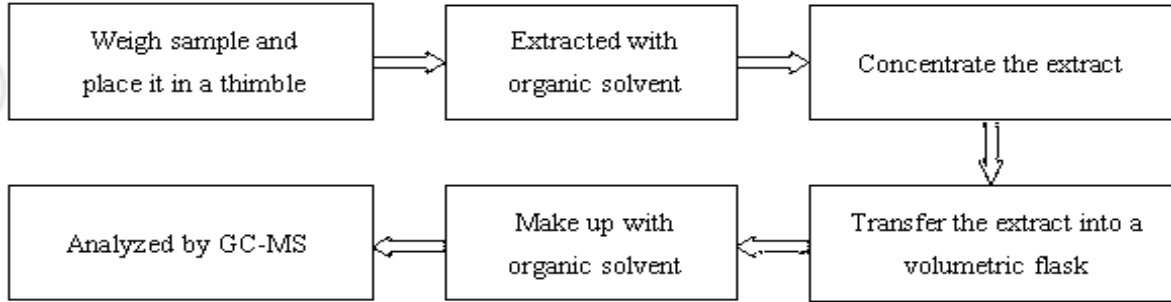


Test Report

Report No. SCL011020344001

Page 6 of 7

5. Phthalates(DBP, BBP, DEHP, DIBP)

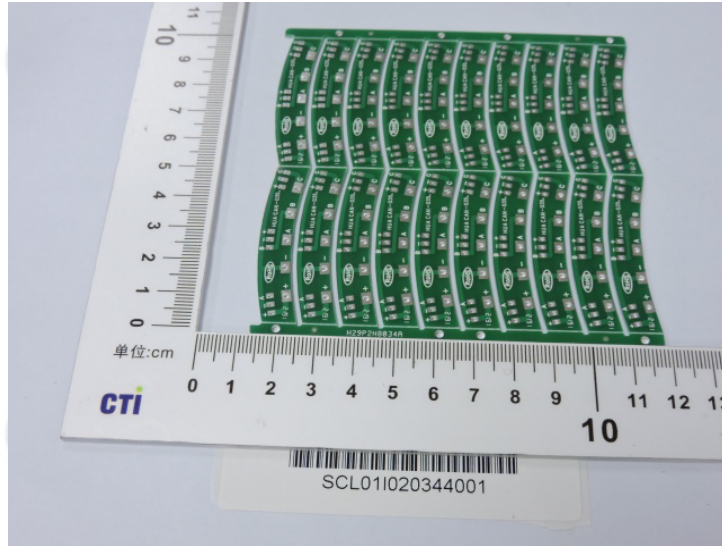


Test Report

Report No. SCL011020344001

Page 7 of 7

Photo(s) of the sample(s)



*** End of report ***

The test report is effective only with both signature and specialized stamp. The result(s) shown in this report refer only to the sample(s) tested. Without written approval of CTI, this report can't be reproduced except in full.