

承認書

SPECIFICATION FOR APPROVAL

● 客戶名称

● Customer

● 客戶品號

● Customer Part No.

● 产品品號

HC-S3210ISR20TP-F1

● Brightek Part No.

● 产品規格描述

1204 侧发红光

● Specification

● 製錶人

王清

● Prepared By

● 審 核

李东平

● Checkedy

● 客 戶 回 簽

● Customer

● 送样日期:

● Deliver date:

說明：一、謹致執事者：茲提供敝公司产品之有關詳細規格及圖面資料，敬請給予辦理測試認定手續。同時敬請送返一份附有貴公司簽認之測試認定後之樣品認定書。

We are sending you our specification and drawings for your approval. Please return to us one copy "For Approval" with your approved signatures.

二、客戶意見欄 Customer' S Proposal

☐ Approve 承認 (請於認可欄中簽名)

☐ Disagree 不同意

Reason 原因:

广东光宇集团

广东光宇实业有限公司

工厂地址：东莞市寮步镇松湖智谷 A2 栋 3 楼

弘呈光电（香 港）有限公司

Hong Cheng Photoelectric (HK) Limited

东莞市弘呈光电有限公司

DongGuan Hong cheng Optoelectronics Co., Ltd.

工厂地址：广东省东莞市樟木头镇莞樟路樟木头段 15 号 15 栋 2108 号

ADD: Room 2108, No. 1 building, Wanhui Garden, East Guanzhang Road, Zhangmutou, Dongguan, Guangdong, China

TEL: 0769-87797616 87182291 Fax: 0769-82337396 www.hc-led168.com

业务联系人：李顺阳 13925714318 (微信同号) 销售总监

版本/版次	修改日期	修改内容
A01		

Features

3.2mm x 1.0mm SMT LED, 1.5mm thickness

Low power consumption

Wide view angle

Package: 3000pcs/reel

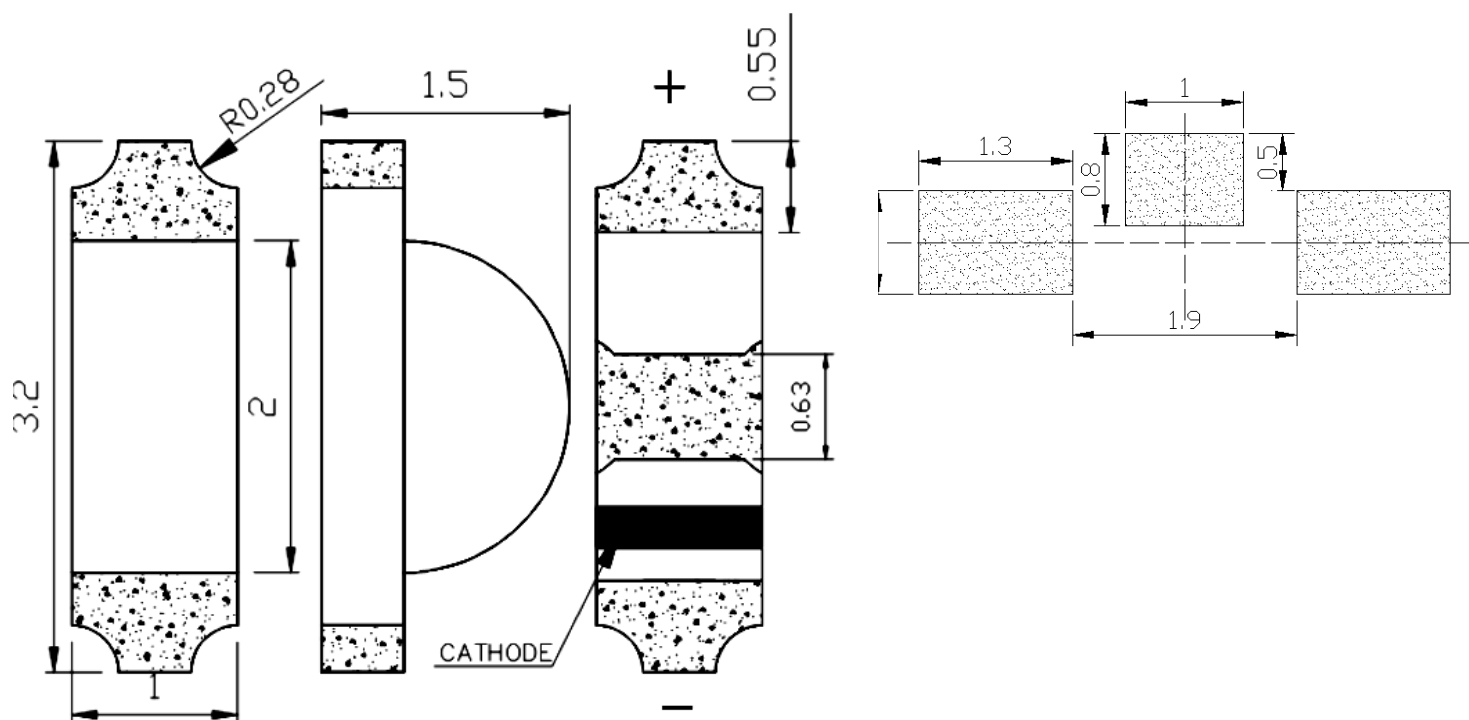
RoHS Compliant

Applications

Ideal for back light and indicator

Various colors and lens types available

Package outlines



Part No.	Emitted color	Dice	Lens color
HC-S3210ISR20TP-F1	Red	AlGaInP	Water transparent

Notes:

1. All dimensions are in millimeters (inches),⁹
2. Tolerances are $\pm 0.1\text{mm}$ (0.004inch) unless otherwise noted.

Absolute maximum ratings (TA=25℃)

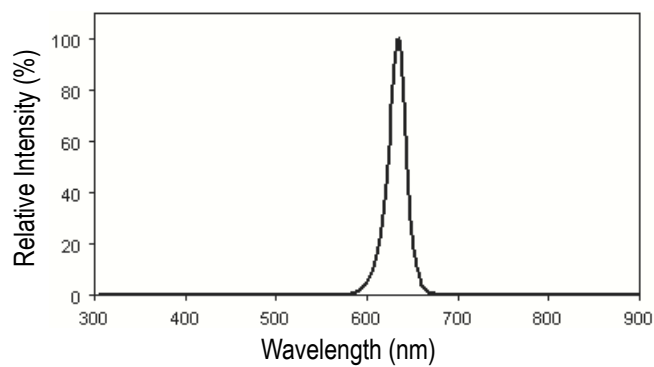
Parameter	Symbol	Value	Unit
Forward current	If	25	mA
Reverse voltage	Vr	5	V
Power dissipation	Pd	52	mW
Operating temperature	Top	-40 ~+80	℃
Storage temperature	Tstg	-40 ~+85	℃
Peak pulsing current	Ifp	100	mA

Electro-optical characteristics (TA=25℃)

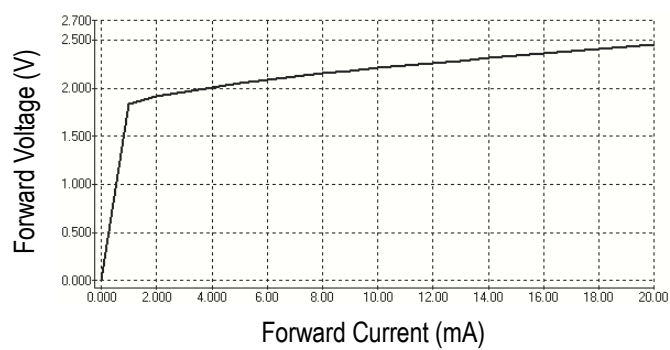
Parameter	Test Condition	Symbol	Value			Unit
			Min	Typ	Max	
Wavelength at peak emission	If=10mA	λ_p	--	635	--	nm
Spectral half bandwidth	If=10mA	$\Delta \lambda$	--	20	--	nm
Dominant wavelength	If=10mA	λ_d	617	--	627	nm
Forward voltage	If=10mA	Vf	1.8	--	2.4	V
Luminous intensity	If=10mA	Iv	50	80	150	mcd
Viewing angle at 50% Iv	If=10mA	2 θ 1/2	--	120	--	Deg
Reverse current	Vr=5V	Ir	--	--	10	μ A

Optical characteristic curves

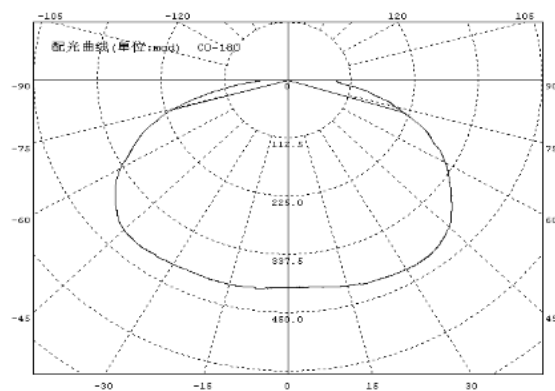
Relative Intensity vs. Wavelength



Forward Current vs. Forward Voltage

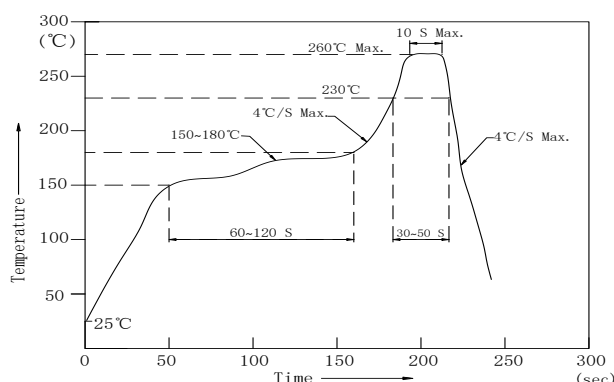


Directive Characteristics



Reflow Profile

■ Reflow Temp/Time



Notes:

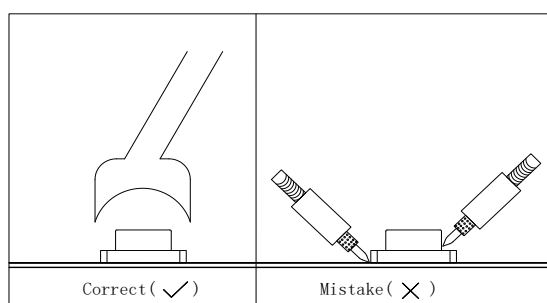
- 1.We recommend the reflow temperature 245°C (±5°C).the maximum soldering temperature should be limited to 260°C .
- 2.Don't cause stress to the epoxy resin while it is exposed to high temperature.
- 3.Number of reflow process shall be 1 times or less.

■Soldering iron

Basic spec is $\leq 5\text{sec}$ when 260°C . If temperature is higher, time should be shorter (+10°C \rightarrow -1sec).Power dissipation of iron should be smaller than 20W, and temperatures should be controllable .Surface temperature of the device should be under 230°C .

■Rework

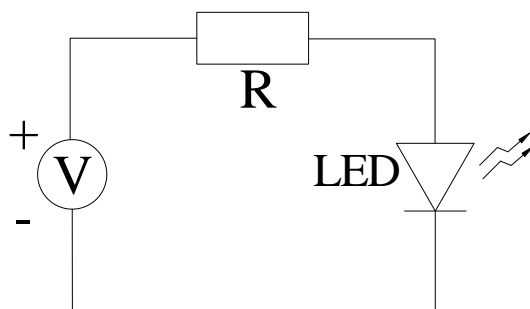
- 1.Customer must finish rework within 5 sec under 260°C .
- 2.The head of iron can not touch copper foil
- 3.Twin-head type is preferred.



- Avoid rubbing or scraping the resin by any object, during high temperature, for example reflow solder etc.

Test circuit and handling precautions

■ Test circuit



■ Handling precautions

1. Over-current-proof

Customer must apply resistors for protection; otherwise slight voltage shift will cause big current change (Burn out will happen).

2. Storage

2.1 It is recommended to store the products in the following conditions:

Humidity: 60% R.H. Max.

Temperature : $5^{\circ}\text{C} \sim 30^{\circ}\text{C}$ ($41^{\circ}\text{F} \sim 86^{\circ}\text{F}$)

2.2 Shelf life in sealed bag: 12 month at $<5^{\circ}\text{C} \sim 30^{\circ}\text{C}$ and $<30\%$ R.H. after

the package is Opened, the products should be used within a week or they should be keeping to stored at ≤ 20 R.H. with zip-lock sealed.

3. Baking

It is recommended to baking before soldering when the pack is unsealed after 72hrs. The Conditions are as followings:

3.1 $60 \pm 3^{\circ}\text{C}$ x(12~24hrs) and $<5\%$ RH, taped reel type

3.2 $100 \pm 3^{\circ}\text{C}$ x(45min~1hr), bulk type

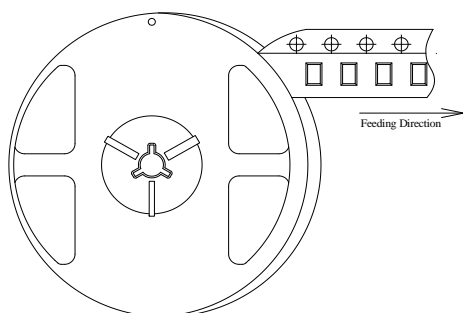
3.3 $130 \pm 3^{\circ}\text{C}$ x(15~30min), bulk type

Test items and results of reliability

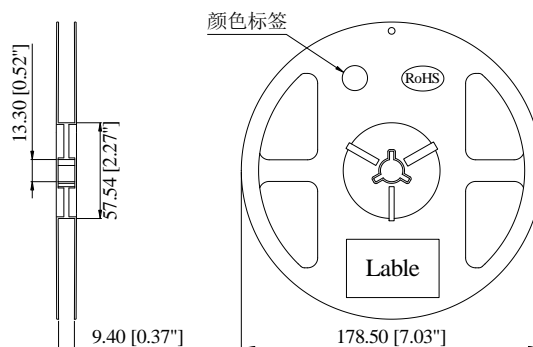
Type	Test Item	Test Conditions	Note	Number of Damaged
Environmental Sequence	Temperature Cycle	-20℃ 30min ↑ ↓ 80℃ 30min	100 cycle	0/22
	Thermal Shock	-20℃ 15min ↑ ↓ 80℃ 15min	100 cycle	0/22
	High Humidity Heat Cycle	30℃ ⇄ 65℃ 90%RH 24hrs/1cycle	10 cycle	0/22
	High Temperature Storage	Ta=80℃	1000 hrs	0/22
	Humidity Heat Storage	Ta=60℃ RH=90%	1000 hrs	0/22
	Low Temperature Storage	Ta=-30℃	1000 hrs	0/22
Operation Sequence	Life Test	Ta=25℃ IF=20mA	1000 hrs	0/22
	High Humidity Heat Life Test	60℃ RH=90% IF=10mA	500 hrs	0/22
	Low Temperature Life Test	Ta=-20℃ IF=20mA	1000 hrs	0/22

3210 Series SMD Chip LED Lamps Packaging Specifications

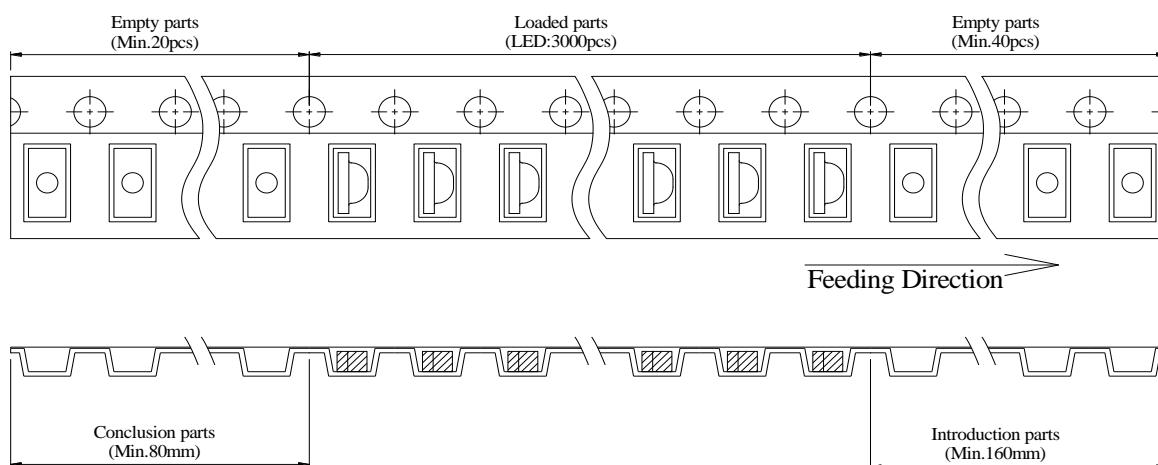
● Feeding Direction



● Dimensions of Reel (Unit: mm)



● Dimensions of Tape (Unit: mm)

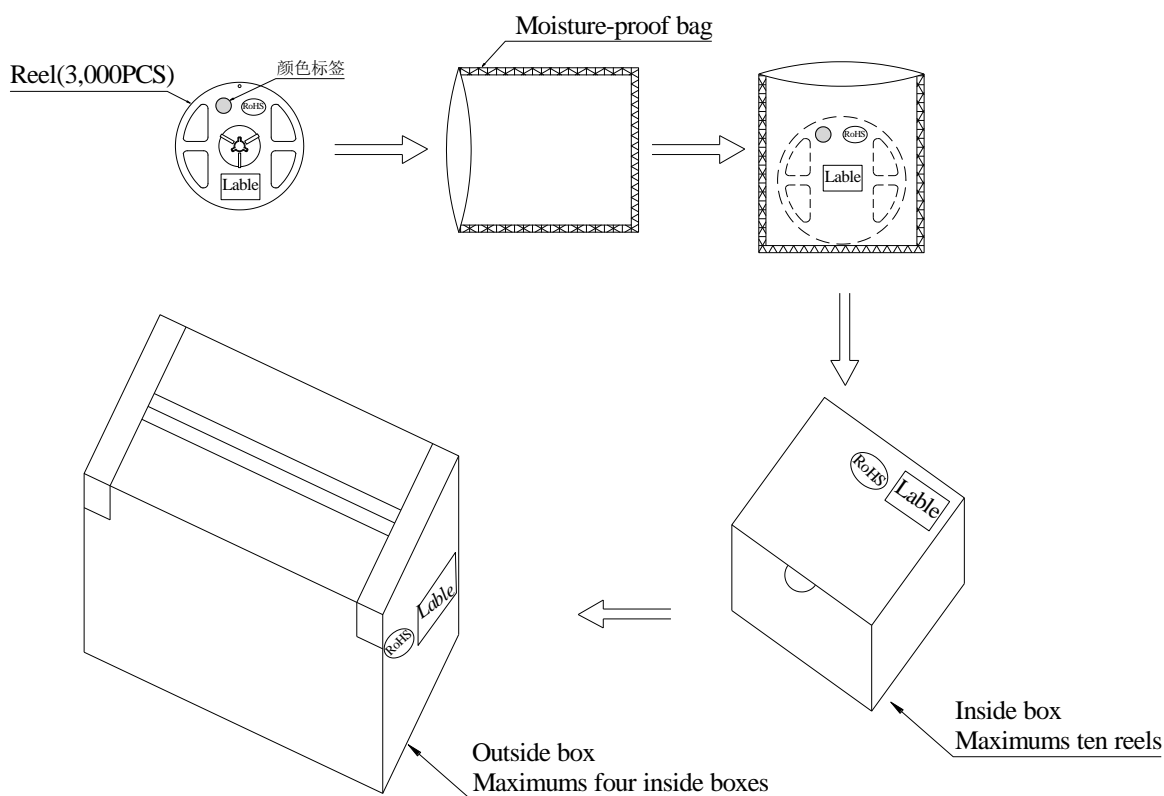


Notes:

1. Empty component pockets are sealed with top cover tape;
2. The maximum number of missing lamps is two;
3. The cathode is oriented towards the tape sprocket hole in accordance with ANSI/EIA RS-481 specifications.
4. 3,000 pcs/Reel.

3210 Series SMD Chip LED Lamps Packaging Specifications

- Packaging specifications



Notes:

Reeled products (numbers of products are 3,000pcs) packed in a seal off moisture-proof bag along with a desiccant one by one, ten moisture-proof bag of maximums (total maximum number of products are 30,000pcs) packed in an inside box (about size: 240x 220x 120mm) and four inside boxes of maximums are put in the outside box (about size: 460mm x 246mm x 250mm) Together with buffer material, and it is packed. (Part No., Lot No., quantity should appear on the label on the moisture-proof bag, part No. and quantity should appear on the label on the cardboard box.) The number of the loading steps of outside box (cardboard box) has it to three steps.