



YC10

整机重量 : 1000 kg

Working weight: 1000 kg

斗容 : 0.02 m³

Bucket capacity: 0.02 m³

[产品介绍](#)
Product introduction

洋马发动机 YANMAR Excavator

国际品牌高性能发动机，为挖掘机提供充足的动力。

The high-performance engine of International brand provides sufficient power for excavator.

全先导操纵 Full Pilot Control

先导操纵带来舒适的驾驶体验，整机操控协调顺畅。

The pilot control brings a comfortable driving experience, and the whole machine controls smoothly.

舒适性提高 Comfort Improvement

高靠背座椅，提升驾驶舒适性。

The high back seat improves driving comfort.



YC10

最小的先导操纵机型 Smallest pilot control type

YC10延续YC08-9的经典设计，主要提升了整机的操控性能，使用国际品牌发动机，双泵定量节流系统等优质配件。

YC10 continues the classic design of YC08-9, mainly improving the control performance of the whole machine, using international brand engine, double pump quantitative throttling system and other high-quality accessories.

玉柴小挖 YUCHAI Mini Excavator. 响彻世界的挖掘机品牌

The world's most famous excavator brand

玉柴重工成立于1989年，是中国最早生产微挖并销往全球的挖掘机企业，是中国国内最大的小型挖掘机生产、出口基地，国家级高新技术企业。
三十多年创新发展，给客户高品质保证！

YUCHAI Heavy Industry Co. Ltd., founded in 1989, is the first enterprise of excavators in China to produce mini-excavators and sell them to the world. As China's largest state-level high-tech enterprise, it is also a producing and exporting base of small excavators.

More than 30 years of innovation and development to ensure high-quality customers!



- 国际品牌发动机
- International Brand Engine

- 功率/转速 (kW/rpm) : 7.3kW/2400rpm
- 自然吸气发动机
- 最大扭矩/转速 (Nm/rpm) : 31.6 ~ 34.4Nm/1800±rpm
- 铝制，油散、水散并联式散热器
- Power/speed (kW/rpm): 7.3 kW/2400 rpm
- Naturally aspirated engine
- Maximum torque/speed (nm/rpm): 31.6 ~ 34.4 nm/1800 rpm
- Aluminum, oil dispersion and water dispersion parallel radiator

- 伸缩底盘
- Adjustable Chassis

- 底盘最窄可收缩至800mm，伸展可达930mm，可通过狭窄通道。
- The chassis can shrink to 800mm at the narrowest, stretch up to 930mm, and can pass through narrow passages.



全先导操纵 Full Pilot Control

驾驶体验更舒适，挖掘机动作更流畅
The driving experience is more comfortable
and the excavator action is more smooth



动臂可左右偏转
The boom can be deflected
left and right

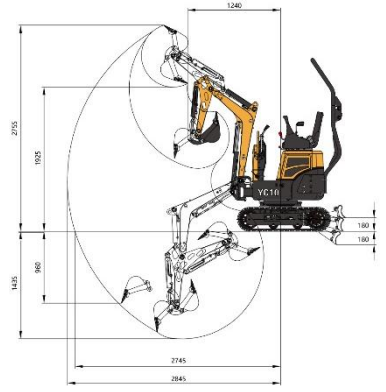
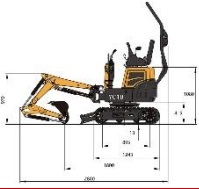


可扩宽的推土板，升级的耐磨铝合金脚踏板，可配备快换装置，底盘履带可伸缩
Expandable push plate, upgraded wear-resistant aluminum alloy pedal, quick-change
device and retractable chassis track.

丰富属具 Rich in Attachments

十多类属具
液压锤、铲斗、快换装置、抓木器、简易
抓钳、清沟斗、贝型斗、钻具、割草机等。
应用四十多种重点工况，工况范围广
More than ten genera of fittings
Hydraulic hammer, bucket, quick change
device, wood grabber, simple grasping
pliers, ditching bucket, shell bucket,
drilling tools, lawn mower, etc. It is
applied in more than 40 key working
conditions.





技术规格 Technical specifications	参数 Parameter	单位 Unit
基本参数 Basic parameter		
整机重量 Machine weight	1000	kg
标准斗容 Bucket capacity	0.02	m ³
性能参数 Performance parameter		
发动机 Engine model	洋马 Yanmar	
发动机额定功率 Engine power	7.3/2400	kW/rpm
爬坡能力 Max. Gradeability	26.6	°
斗杆最大挖掘力 Max. digging force of arm	5.45	kN
铲斗最大挖掘力 Max. digging force of bucket	8.38	kN
行驶速度 Traveling speed	2.6±0.2/1.6±0.2	km/h
平台回转速度 Slewing speed of platform	9~11	rpm
作业参数 Operating parameter		
最大挖掘高度 Max. digging height	2755	mm
最大挖掘深度 Max. digging depth	1435	mm
最大挖掘半径 Max. digging radius	2845	mm
最大地面挖掘半径 Max. digging radius on ground level	2745	mm
最大卸载高度 Max. dumping height	1925	mm
最小回转半径 Min. slewing radius	1240	mm
最大垂直挖深 Max. vertical digging depth	960	mm
运输尺寸 Transportation dimension		
总长（运输状态） Overall length	2800	mm
总宽（运输状态） Overall width	800	mm
总高（运输状态） Overall height	2300	mm
其他参数 Other Parameter		
履带宽度 Width of undercarriage	800/930	mm
履带长度 Length of track	1243	mm
最小离地间隙 Height between undercarriage and ground	155	mm
平衡重离地高度 Height between platform and ground	415	mm
尾部回转半径 Platform tail turning radius	870	mm
燃油箱容量 Fuel tank capacity	7.5	L
液压油箱容量 Hydraulic oil tank capacity	9	L