



## YC60-9

整机重量: 5750 kg

Working weight: 5750 kg

斗容: 0.21 m<sup>3</sup>

Bucket capacity: 0.21 m<sup>3</sup>

产品介绍  
Product introduction

## 国际品牌发动机

### International Brand Engine

搭载原装进口久保田V2403 (30.7kW/2200rpm);  
省油、低噪、动力足，低排放，符合排放法规。

Equipped with imported Kubota V2403(30.7KW /2200rpm);

Fuel saving, low noise, full power, low emission, compliance with emission regulations.

## 液压系统升级

### Hydraulic System Upgrade

YC60-9采用三泵系统，日本原装进口，有斗杆再生功能，系统操作平稳、柔和、协调，高可靠性。

YC60-9 adopts three pump system, imported from Japan, with bucket rod regeneration function. The operation is smooth, soft, coordinated and high-reliable.

## 充足的牵引力

### Sufficient Traction

YC60-9配原装进口行走马达，整机牵引力强劲，爬坡能力达35度；系统压力24Mpa，铲斗挖掘力达3.6吨，能合适多种复杂工况。

YC60-9 with the original imported walking motor, the machine has strong traction, climbing ability up to 35 degrees;

The system pressure is 24Mpa, the bucket excavation strength is 3.6 tons, can be suitable for a variety of complex working conditions.



# YC60-9

## 玉柴重工6 ton小挖

### Yuchai Heavy Industry 6 Ton Small Excavator

专家团队创新设计，提升动作协调性，标准操作可轻松完成平土距离超1500mm，新手轻松掌握，降低劳动强度。在同等条件下更具优势。

The innovative design of expert team improves the coordination of movement. The standard operation can easily level land over 1500mm, which is easy for novices to master and reduce the labor intensity. More advantages under the same conditions.



# 玉柴小挖 YUCHAI Small Excavator. 响彻世界的挖掘机品牌 The world's most famous excavator brand

玉柴重工成立于1989年，是中国最早生产微挖并销往全球的挖掘机企业，是中国国内最大的小型挖掘机生产、出口基地，国家级高新技术企业。三十多年创新发展，给客户高品质保证！

YUCHAI Heavy Industry Co. Ltd., founded in 1989, is the first enterprise of excavators in China to produce mini-excavators and sell them to the world. As China's largest state-level high-tech enterprise, it is also a producing and exporting base of small excavators.

More than 30 years of innovation and development to ensure high-quality customers!



## 行业内同吨位最大的驾驶室 The Largest Cab of the Same Tonnage in the Industry

全新减震航空座椅，可实现50-130kg之间无级调节。与控制台为一体的扶手，采用双级滑梯结构，与座椅前后可进行自由调节。座椅打开角度 > 135°。

The new shock-absorbing aviation seat can realize step-less adjustment between 50-130kg. The handrail, integrated with the console, adopts a two-stage sliding structure, and seats can adjust back and forth. The opening angle of the chair is > 135°.



- **合理的布局 Reasonable Layout**
- 三滤集中布置、多路阀前置、超大燃油箱
- 大容量燃油箱能满足机器持续16小时以上工作，减轻加油负担
- Three centralized filter arrangements, the multi-way valve in front, a large fuel tank.
- The large-capacity fuel tank can satisfy the machine's working for more than 16 hours, thus reducing the refueling burden.

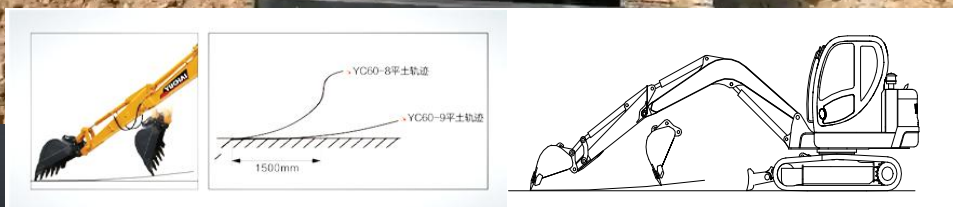
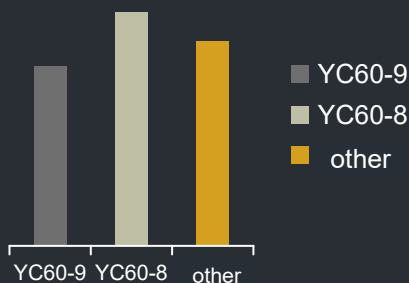


## 更低的油耗

### Lower Fuel Consumption

柴油机和液压系统的功率匹配深度优化，相比YC60-8，YC60-9节省油耗最大可达30%，燃油经济性在同行中优势明显。

Compared with YC60-8, YC60-9 can save fuel consumption up to 30%, and the fuel economy has apparent advantages over peers.



## 性能提升，高效平土

### Improve Performance and Level Soil with High Efficiency.

YC60-9提升动作协调性，标准操作可轻松完成平土距离超1500mm，新手轻松掌握，降低劳动强度，同等条件下竞品平土距离不到800mm，在同行中优势显著。

YC60-9 improves the coordination of movements, and the standard operation can easily level land over 1500mm, which is easy for novices to master and reduce the labor intensity. Under the same conditions, the leveling distance of YC60-8 is less than 800mm, which has a significant advantage over peers.

## 丰富属具 Rich in Attachments

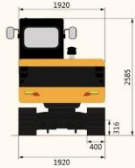
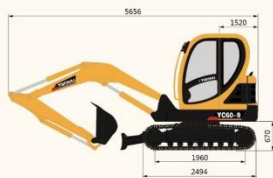
十多样属具

液压锤、铲斗、快换装置、抓木器、简易抓钳、清沟斗、贝型斗、钻具、割草机等。应用于四十多种重点工况，工况范围广。

More than ten genera of fittings

Hydraulic hammer, bucket, quick change device, wood grabber, simple grasping pliers, ditching bucket, shell bucket, drilling tools, lawn mower, etc. It is applied to a wide range of key working conditions, up to 40.





技术规格 Technical specifications	参数 Parameter	单位 Unit
<b>基本参数</b> Basic parameter		
整机重量 Machine weight	5750	kg
标准斗容 Bucket capacity	0.21	m <sup>3</sup>
<b>性能参数</b> Performance parameter		
发动机 Engine model	久保田 kubota	
发动机额定功率 Engine power	30.7/2200	kW/rpm
爬坡能力 Max. Gradeability	35	°
斗杆最大挖掘力 Max. digging force of arm	27.5	kN
铲斗最大挖掘力 Max. digging force of bucket	36.6	kN
行驶速度 Traveling speed	2.2/3.6	km/h
平台回转速度 Slewing speed of platform	9~11	rpm
<b>作业参数</b> Operating parameter		
最大挖掘高度 Max. digging height	5740	mm
最大挖掘深度 Max. digging depth	3720	mm
最大挖掘半径 Max. digging radius	6065	mm
最大地面挖掘半径 Max. digging radius on ground level	5945	mm
最大卸载高度 Max. dumping height	4040	mm
最小回转半径 Min. slewing radius	2175	mm
最大垂直挖深 Max. vertical digging depth	2750	mm
<b>运输尺寸</b> Transportation dimension		
总长 (运输状态) Overall length	5656	mm
总宽 (运输状态) Overall width	1920	mm
总高 (运输状态) Overall height	2585	mm
<b>其他参数</b> Other Parameter		
履带宽度 Width of undercarriage	1920	mm
履带长度 Length of track	2494	mm
最小离地间隙 Height between undercarriage and ground	316	mm
平衡重离地高度 Height between platform and ground	670	mm
尾部回转半径 Platform tail turning radius	1520	mm
燃油箱容量 Fuel tank capacity	103	L
液压油箱容量 Hydraulic oil tank capacity	74	L