



## YC18SR PRO

**整机重量 : 1800 kg**

**Working weight: 1800 kg**

**斗容 : 0.05 m<sup>3</sup>**

**Bucket capacity: 0.05 m<sup>3</sup>**

[产品介绍](#)  
Product introduction

## 超强适应性

### Super Adaptability

上置臂、偏转、无尾、履带切  
换、十多种属具、二&四柱&驾  
驶室互换

Upper arm, deflection, tailless,  
track change, more than ten  
kinds of attachments, two &  
four columns & cab exchange

## 稳定性提升

### Stability Improvement

内置管路、铸钢件端头、伸缩  
底盘

Built-in pipeline, steel casting  
end, telescopic chassis

## 舒适性提高

### Comfort Improvement

高靠背座椅、操纵系统提升

High back seat, improvement  
of control system



# YC18SR PRO

## 细节提升80多项

Improve more than 80 details

推土铲大保护板、管路布局保护、底盘胶管保护、伸缩油缸加液压锁、操纵箱仪  
表、开关、LED灯、超柔先导管等

Large protection plate of pushing shovel, pipeline layout protection, chassis hose protection, telescopic  
cylinder with hydraulic lock, control box instrument, switch, LED lights, super flexible pilot pipe, etc.

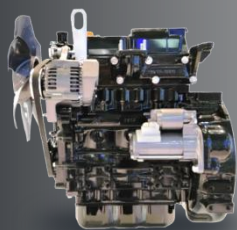
# 玉柴小挖 YUCHAI Mini Excavator. 响彻世界的挖掘机品牌

The world's most famous excavator brand

玉柴重工成立于1989年，是中国最早生产微挖并销往全球的挖掘机企业，是中国国内最大的小型挖掘机生产、出口基地，国家级高新技术企业。  
三十多年创新发展，给客户高品质保证！

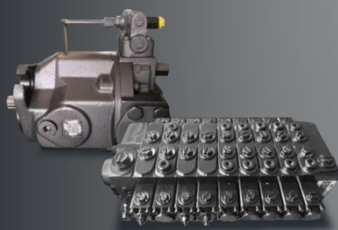
YUCHAI Heavy Industry Co. Ltd., founded in 1989, is the first enterprise of excavators in China to produce mini-excavators and sell them to the world. As China's largest state-level high-tech enterprise, it is also a producing and exporting base of small excavators.

More than 30 years of innovation and development to ensure high-quality customers!



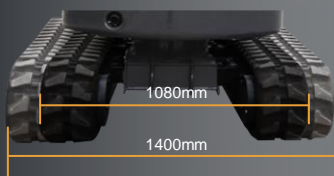
## • 洋马发动机 YANMAR Engine

- 发动机功率储备大30%
- 无需增压即可面对高原工况
- 功率/转速14.5/2400 ( kW/rpm )
- 最大扭矩/转速62.7~68.4Nm/1800rpm
- 铝制、油散、水散并联式散热器
- Engine power reserve is 30% larger
- No pressurization is required to face altitude conditions
- Power/Speed 14.5/2400 (kW/ RPM)
- Maximum torque/speed 62.7~68.4Nm/1800rpm
- Aluminum, oil and water parallel radiator



## • 负载敏感系统 Load Sensitive System

- 动作轻盈、迅捷、有力、协调、高效
- 负载敏感控制系统的功率损耗较低，效率远高于常规液压系统
- 高效率、功率损失小意味着燃料的节省以及液压系统较低的发热量
- The movement is light, swift, powerful, coordinated and efficient.
- The load-sensitive control system has lower power loss and higher efficiency than conventional hydraulic system.
- High efficiency and low power loss mean fuel savings and lower heat production from hydraulic systems.



## • 伸缩底盘 Adjustable Chassis

- 底盘最窄可收缩至1080mm，伸展可达1400mm，可通过狭窄通道
- The chassis can shrink to 1080mm at the narrowest, stretch up to 1400mm, and can pass through narrow passages.



## • 可更换履带 Replaceable Tracks

- 默认使用橡胶履带、可更换钢履带，无需更换支重轮即可更换
- Rubber tracks and replaceable steel tracks are used by default, which can be replaced without replacing the support wheel.

## 全先导操纵 Full Pilot Control

驾驶体验更舒适，挖掘机动作更流畅  
The driving experience is more comfortable  
and the excavator action is more smooth



## 动臂可左右偏转

The Boom Can Be Deflected  
Left and Right

动臂最大左偏转角度70°

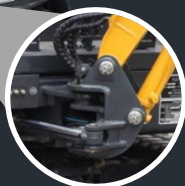
动臂最大右偏转角度60°

为提高挖掘机挖斗的灵活性，减小其工作所需的范围，使挖斗能在机身和动臂保持不动的情况下发生转动

Maximum left deflection angle of boom is 70°.

Maximum right deflection angle of boom is 60°.

We improve the flexibility of the excavator bucket, reduce the space range required for its work, so that the bucket can rotate in the case of the fuselage and boom remain stationary.



## 超强互换 Super Swap

二柱棚→四柱棚，实现驾驶棚与驾驶室安装互换

Two columns → four columns shed.  
The cab switch is simple.



## 丰富属具 Rich in Attachments

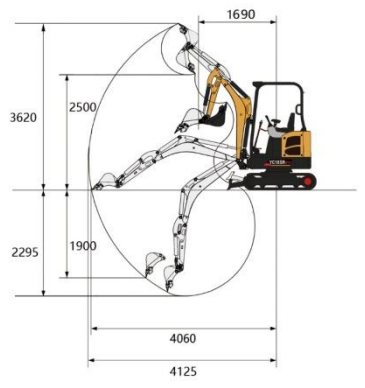
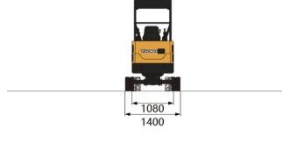
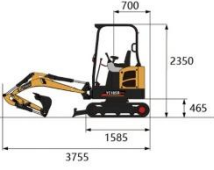
十多类属具

液压锤、铲斗、快换装置、抓木器、简易抓钳、清沟斗、贝型斗、钻具、割草机等。应用于四十多种重点工况，工况范围广。

More than ten genera of fittings

Hydraulic hammer, bucket, quick change device, wood grabber, simple grasping pliers, ditching bucket, shell bucket, drilling tools, lawn mower, etc. It is applied in more than 40 key working conditions.





技术规格 Technical specifications	参数 Parameter	单位 Unit
<b>基本参数</b> Basic parameter		
整机重量 Machine weight	1800	kg
标准斗容 Bucket capacity	0.05	m <sup>3</sup>
<b>性能参数</b> Performance parameter		
发动机 Engine model	Yanmar 3TNV76-PYU /Yanmar 3TNV80F	
发动机额定功率 Engine power	14.5/2400	kW/rpm
爬坡能力 Max. Gradeability	30	°
斗杆最大挖掘力 Max. digging force of arm	8.5	kN
铲斗最大挖掘力 Max. digging force of bucket	15.5	kN
行驶速度 Traveling speed	4/2	km/h
平台回转速度 Slewing speed of platform	8.5-10.5	rpm
<b>作业参数</b> Operating parameter		
最大挖掘高度 Max. digging height	3615	mm
最大挖掘深度 Max. digging depth	2300	mm
最大挖掘半径 Max. digging radius	4125	mm
最大地面挖掘半径 Max. digging radius on ground level	4060	mm
最大卸载高度 Max. dumping height	2500	mm
最小回转半径 Min. slewing radius	1690	mm
最大垂直挖深 Max. vertical digging depth	1905	mm
<b>运输尺寸</b> Transportation dimension		
总长 (运输状态) Overall length	3750	mm
总宽 (运输状态) Overall width	1080/1400	mm
总高 (运输状态) Overall height	2350	mm
<b>其他参数</b> Other Parameter		
履带宽度 Width of undercarriage	1080/1400	mm
履带长度 Length of track	1585	mm
最小离地间隙 Height between undercarriage and ground	145	mm
平衡重离地高度 Height between platform and ground	465	mm
尾部回转半径 Platform tail turning radius	700	mm
燃油箱容量 Fuel tank capacity	23	L
液压油箱容量 Hydraulic oil tank capacity	20	L