



YC35SR PRO

整机重量 : 3860 kg

Working weight: 3860 kg

斗容 : 0.12 m³

Bucket capacity: 0.12 m³

[产品介绍](#)
Product introduction

无尾挖掘机 Tailless Excavator

独特的无尾回转，相比大吨位的挖掘机，YC35SR pro机身更小巧，运输过程速度快更灵活。

Compared with other large tonnage excavators, YC35SR Pro, with unique tailless rotation, is smaller, faster and more flexible in transportation.

实用且优美 Practical and Elegant

3.8t的重量相比微挖具有优势，一台YC35SR pro相当于20名工人的劳动力，还可以搭配30多种属具，同时具有左右偏转装置，备受各国消费者的喜爱。

Compared with other mini excavators, 3.8 ton excavator has advantages. A YC35SR Pro is equivalent to the labor force of 20 workers and can also match more than 30 kinds of attachments. At the same time, the left and right deflection device is favored by consumers worldwide.

舒适的驾驶体验 Comfortable Driving Experience

优美的外观、高强度、大空间、人性化的驾驶室设计，带来舒适的驾驶体验；各部件采用高强度钢材，安全可靠。

The beautiful appearance and humanized design of the cab bring a comfortable driving experience; With high-strength steel adapted to all parts, it is safe and reliable.



YC35SR PRO

玉柴重工3.8 ton无尾挖掘机

Yuchai Heavy Industry 3.8 ton tailless excavator

独特的无尾回转，相比大吨位的挖掘机，YC35SR pro机身更小巧，运输过程速度快更灵活。

Compared with other large tonnage excavators, YC35SR Pro, with unique tailless rotation, is smaller, faster and more flexible in transportation.



玉柴小挖 YUCHAI Mini Excavator. 响彻世界的挖掘机品牌

The world's most famous excavator brand

玉柴重工成立于1989年，是中国最早生产微挖并销往全球的挖掘机企业，是中国国内最大的小型挖掘机生产、出口基地，国家级高新技术企业。三十多年创新发展，给客户高品质保证！

YUCHAI Heavy Industry Co. Ltd., founded in 1989, is the first enterprise of excavators in China to produce mini-excavators and sell them to the world. As China's largest state-level high-tech enterprise, it is also a producing and exporting base of small excavators.

More than 30 years of innovation and development to ensure high-quality customers!



全新升级的驾驶室 New and Upgraded Cab

可翻转驾驶室，可拆围板，维修更便利。平台各液压件及维修点。一览无余。

There are reversible cab, detachable enclosure boards, and more convenient maintenance. The platform's hydraulic components and maintenance points are taken in at a glance.



合理的布局 Reasonable Layout

- 搭载YANMAR发动机功率/转速 14.5/2400(kW/rpm)，最大扭矩/转速62.7~68.4Nm/1800rpm；
- 三滤集中布置，采用负载敏感系统，全智能控制，全程精确匹配，更高的作业效率
- The YANMAR engine is equipped with a power/speed of 14.5/2400(kW/rpm) and a maximum torque/speed of 62.7 ~ 68.4 nm/1800 rpm;
- There are three-filter centralized arrangements, a load-sensitive system, complete intelligent control, accurate matching in the process, and higher working efficiency.

全先导操纵 Full Pilot Control

驾驶体验更舒适，挖掘机动作更流畅

The driving experience is more comfortable and the excavator action is more smooth



贴墙仍可完成回转作业

It can rotate even though it is next to the wall.

YC35SR pro满足狭窄场地作业。当挖掘机与墙体平行时，可以保持机身静止的情况下，使用左右偏转装置进行工作。无尾挖掘机的设计，确保尾部回转的时候小于底盘宽度，方便在狭小的工况下完成工作

YC35SR Pro can operate on a narrow field. When the excavator is parallel to the wall, the machine works with a left & right deflection device while keeping the fuselage stationary. The design of the tailless excavator ensures that the tail is less than the width of the chassis in the rotation, which is convenient for completing the work in narrow working conditions.

动臂可左右偏转

The Boom Can be Deflected Left and Right

动臂最大左偏转角度66.7°

动臂最大右偏转角度53.7°

为提高挖掘机挖斗的灵活性，减小其工作所需的范围，使挖斗能在机身和动臂保持不动的情况下发生转动

Maximum left deflection angle of boom is 66.7°.

We improve the flexibility of the excavator bucket, reduce the space range required for its work so that the bucket can rotate in the case of the fuselage and boom remain stationary.

丰富属具 Rich in Attachments

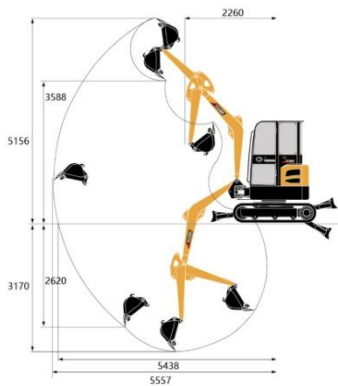
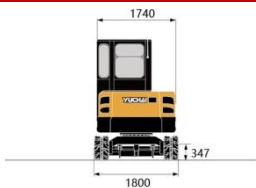
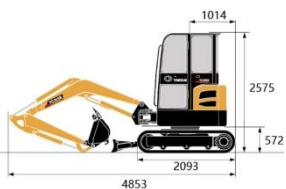
十多种属具

液压锤、铲斗、快换装置、抓木器、简易抓钳、清沟斗、贝型斗、钻具、割草机等。应用于四十多种重点工况，工况范围广。

More than ten genera of fittings

Hydraulic hammer, bucket, quick change device, wood grabber, simple grasping pliers, ditching bucket, shell bucket, drilling tools, lawn mower, etc. It is applied in more than 40 key working conditions.





技术规格 Technical specifications	参数 Parameter	单位 Unit
基本参数 Basic parameter		
整机重量 Machine weight	3860	kg
标准斗容 Bucket capacity	0.12	m ³
性能参数 Performance parameter		
发动机 Engine model	YANMAR	
发动机额定功率 Engine power	18.2/2200	kW/rpm
爬坡能力 Max. Gradeability	35	°
斗杆最大挖掘力 Max. digging force of arm	25.8	kN
铲斗最大挖掘力 Max. digging force of bucket	32.7	kN
行驶速度 Traveling speed	3.1/4.8	km/h
平台回转速度 Slewing speed of platform	11~13	rpm
作业参数 Operating parameter		
最大挖掘高度 Max. digging height	5156	mm
最大挖掘深度 Max. digging depth	3170	mm
最大挖掘半径 Max. digging radius	5557	mm
最大地面挖掘半径 Max. digging radius on ground level	5438	mm
最大卸载高度 Max. dumping height	3588	mm
最小回转半径 Min. slewing radius	2260	mm
最大垂直挖深 Max. vertical digging depth	2620	mm
运输尺寸 Transportation dimension		
总长 (运输状态) Overall length	4853	mm
总宽 (运输状态) Overall width	1800	mm
总高 (运输状态) Overall height	2575	mm
其他参数 Other Parameter		
履带宽度 Width of undercarriage	1800	mm
履带长度 Length of track	2093	mm
最小离地间隙 Height between undercarriage and ground	347	mm
平衡重离地高度 Height between platform and ground	572	mm
尾部回转半径 Platform tail turning radius	1014	mm
燃油箱容量 Fuel tank capacity	52	L
液压油箱容量 Hydraulic oil tank capacity	40	L