



# YC135-9

**整机重量: 13800 kg**

**Working weight: 13800 kg**

**斗容: 0.52 m<sup>3</sup>**

**Bucket capacity: 0.52 m<sup>3</sup>**

[产品介绍](#)  
Product introduction

## 强劲的玉柴发动机 Powerful Yuchai Engine

YC135-9搭载玉柴自主研发的发动机，扭矩强劲，动力储备充足，油耗低，响应快，更优的燃油效率。

YC135-9 is equipped with an engine independently developed by Yuchai, which has strong torque, sufficient power reserve, low fuel consumption, fast response and better fuel efficiency.

## 国际品牌液压系统 International Brand Hydraulic System

复合动作的调性顺畅；  
液压阀稳定高效，可靠性高  
The tonality of compound movements is smooth;  
The hydraulic valve is stable, efficient and reliable.

## 舒适的驾驶体验 Comfortable Driving Experience

YC135-9具有宽敞的驾驶室，驾驶视野开阔，搭配悬浮减震座椅。空调制冷效率同比提升18%，整体操作舒适。  
YC135-9 has a spacious cab, broad driving vision, and suspension shock-absorbing seats. The air-conditioning efficiency refrigeration has increased by 18% yearly, and the overall operation is comfortable.



# YC135-9

## 玉柴重工13 ton中型挖掘机

Yuchai Heavy Industry 13 ton Medium Excavator

YC135-9是玉柴重工公司升级换代的新一代挖掘机产品。它能够适应多种工况。其突出的挖掘性能适用于土石挖掘、破碎等高强度工况，吨位适中。也适用于城市建设、高原寒冷的环境、农村改造等灵活作业。

YC135-9 is a new generation excavator product upgraded by the Yuchai Heavy Industry Co., Ltd. It has a wide range of working conditions. Its outstanding excavation performance is suitable for high-strength conditions such as soil and rock excavation and crushing with moderate tonnage. It is also suitable for flexible operations such as urban construction, cold plateau environment and rural reconstruction.



# 玉柴小挖 YUCHAI Small Excavator 响彻世界的挖掘机品牌

The world's most famous excavator brand

玉柴重工成立于1989年，是中国最早生产微挖并销往全球的挖掘机企业，是中国国内最大的小型挖掘机生产、出口基地，国家级高新技术企业。三十多年创新发展，给客户高品质保证！

YUCHAI Heavy Industry Co. Ltd., founded in 1989, is the first enterprise of excavators in China to produce mini-excavators and sell them to the world. As China's largest state-level high-tech enterprise, it is also a producing and exporting base of small excavators.

More than 30 years of innovation and development to ensure high-quality customers!



## 不惧严酷环境 Not Afraid of Harsh Environment

玉柴挖掘机YC135-9表现优秀，稳定的液压系统，装配玉柴发动机，让玉柴挖掘机可以应对各种工况，包括一系列高温高湿、高原高强度、低温严寒环境的考验

Yuchai excavator YC135-9 has excellent performance, a stable hydraulic system and a Yuchai engine to cope with various working conditions, including a series of conditions of high temperature and high humidity, high strength in the plateau, and severe cold environment.



## 全新驾驶室 Brand New Cab

YC135-9具有宽敞的驾驶室，驾驶视野开阔；全彩色大屏，分辨率更高，色彩饱和度更好，屏幕更大，识别更轻松。搭配悬浮减震座椅，适合不同身材或坐姿有效减轻疲劳。

YC135-9 has a spacious cab and a broad driving vision; Full-color large screen has higher resolution, better color saturation and easier recognition. Suspension shock-absorbing seat is suitable for different figures or sitting postures to relieve fatigue effectively.

## 全先导操纵 Full Pilot Control

驾驶体验更舒适，挖掘机动作更流畅

The driving experience is more comfortable and the excavator action is more smooth



## 销量冠军机型—广受客户好评的挖掘机

**Sales Champion Model—Excavator Widely Praised by Customers.**

YC135-9为玉柴重工全新升级的新一代挖掘机产品，具有广泛的工况适应性，突出的挖掘性能适用于土岩挖掘、破碎等高强度工况，同时适中的吨位也适用于城市建设、农村改造等灵活作业，为同级别机型的“全能王”。  
YC135-9 is a new-generation excavator product newly upgraded by Yuchai Heavy Industry with a wide range of working conditions. Its great digging performance suits high-strength working conditions such as digging and crushing soil and rocks. Its moderate tonnage suits flexible operations such as urban construction and rural reconstruction. It is the "king of all-around" of the same class.

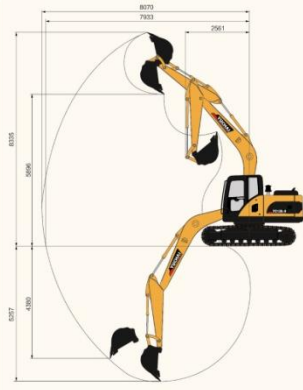
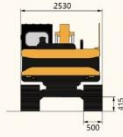
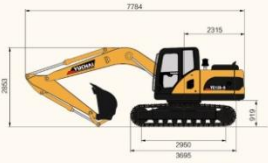


## 维护保养便利 Easy Maintenance

保留整体机罩的同时，增加了两扇可开启的侧门，三滤集中，触手可及，所有维护、检测点触手可及。

所有主液压胶管布置正对工作装置方向，提高了检测、维修的便利性  
While the whole hood is kept, two openable side doors are added, and the three filters are centralized so that all maintenance and inspection points are within reach.

All the main hydraulic hoses are arranged in the direction of the working device, which improves the convenience of detection and maintenance.



技术规格 Technical specifications	参数 Parameter	单位 Unit
<b>基本参数</b> Basic parameter		
整机重量 Machine weight	13800	kg
标准斗容 Bucket capacity	0.52	m <sup>3</sup>
<b>性能参数</b> Performance parameter		
发动机 Engine model	玉柴 YUCHAI	
发动机额定功率 Engine power	86.4/2200	kW/rpm
爬坡能力 Max. Gradeability	35	°
斗杆最大挖掘力 Max. digging force of arm	75.8	kN
铲斗最大挖掘力 Max. digging force of bucket	106	kN
行驶速度 Traveling speed	3.1/5.0	km/h
平台回转速度 Slewing speed of platform	11~13	rpm
<b>作业参数</b> Operating parameter		
最大挖掘高度 Max. digging height	8335	mm
最大挖掘深度 Max. digging depth	5257	mm
最大挖掘半径 Max. digging radius	8070	mm
最大地面挖掘半径 Max. digging radius on ground level	7933	mm
最大卸载高度 Max. dumping height	5896	mm
最小回转半径 Min. slewing radius	2561	mm
最大垂直挖深 Max. vertical digging depth	4380	mm
<b>运输尺寸</b> Transportation dimension		
总长 (运输状态) Overall length	7784	mm
总宽 (运输状态) Overall width	2530	mm
总高 (运输状态) Overall height	2853	mm
<b>其他参数</b> Other Parameter		
履带宽度 Width of undercarriage	2500	mm
履带长度 Length of track	3695	mm
最小离地间隙 Height between undercarriage and ground	415	mm
平衡重离地高度 Height between platform and ground	919	mm
尾部回转半径 Platform tail turning radius	2315	mm
燃油箱容量 Fuel tank capacity	270	L
液压油箱容量 Hydraulic oil tank capacity	105	L