



YC80-9E

整机重量: 7800 kg

Working weight: 7800 kg

斗容: 0.26 m³

Bucket capacity: 0.26 m³

产品介绍
Product introduction

国际品牌发动机 International Brand Engine

搭载洋马98自然吸气发动机，排放标准符合法规。
It is equipped with YANMAR 98 naturally aspirated engine, with an approved power of 44.4kW/2100rpm;
Fuel-saving, low noise, sufficient power, low emission, and compliance with emission regulations.

同级别最大的挖掘力 Maximum Digging Force at the Same Level.

YC80-9E最大牵引力68kN，铲斗挖掘力：56kN，斗杆挖掘力：38kN，确保强劲挖掘力的有效发挥，挖掘、吊装更平稳。
The maximum traction force of YC80-9E is 68kN, the digging force of bucket is 56kN, and the digging force of arm is 38kN, which ensures the strong digging force and makes the digging and hoisting more stable.

更高的能效比 Higher Energy Efficiency

更优的燃油效率：在常用转速范围，YC80-9平均效率比行业标杆机型高约19%。
Better fuel efficiency: In the common speed range, the average efficiency of YC80-9 is about 19% higher than the industry benchmark model.



YC80-9E

玉柴重工8 ton小挖

Yuchai Heavy Industry 8 ton Tailless Excavator

YC80-9E对功率匹配、作业范围、整机重量等进行一系列优化。机器仍延续YC85-9主要造型、节能、舒适、可靠、便于维护和智能化等特点，符合排放要求，整机质量为7800kg，斗容0.26m³

YC80-9E makes a series of optimization on power matching, working range, weight of the whole machine, etc. The machine continues the characteristics of YC85-9, such as main styling, energy saving, comfort, reliability, easy maintenance and intelligence, etc., and meets the emission requirements. The whole machine has a mass of 7800kg and a bucket capacity of 0.26m³.

玉柴小挖 YUCHAI Small Excavator. 响彻世界的挖掘机品牌 The world's most famous excavator brand

玉柴重工成立于1989年，是中国最早生产微挖并销往全球的挖掘机企业，是中国国内最大的小型挖掘机生产、出口基地，国家级高新技术企业。三十多年创新发展，给客户高品质保证！

YUCHAI Heavy Industry Co. Ltd., founded in 1989, is the first enterprise of excavators in China to produce mini-excavators and sell them to the world. As China's largest state-level high-tech enterprise, it is also a producing and exporting base of small excavators.

More than 30 years of innovation and development to ensure high-quality customers!



丰富属具 Rich in Attachments

三十多类属具

液压锤、铲斗、快换装置、抓木器、简易抓钳、清沟斗、贝型斗、钻具、割草机等，应用四十多种重点工况，工况范围广

More than ten genera of fittings

Hydraulic hammer, bucket, quick change device, wood grabber, simple grasping pliers, ditching bucket, shell bucket, drilling tools, lawn mower, etc. It is applied in more than 40 key working conditions.



维护保养便利 Easy Maintenance

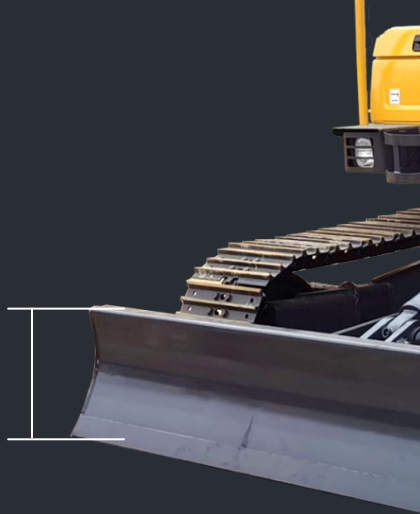
- 保留整体机罩的同时，增加了两扇可开启的侧门，三滤集中，触手可及，所有维护、检测点触手可及。
- 所有主液压胶管布置正对工作装置方向，提高了检测、维修的便利性
- While the whole hood is kept, two openable side doors are added, and the three filters are centralized, so that all maintenance and inspection points are within reach.
- All the main hydraulic hoses are arranged in the direction of the working device, which improves the convenience of detection and maintenance.

推土板增高10%

Push Soil Plate Increase 10%

优化铲刀形状，推土作业更高效，独特设计的形状，泥土不会从铲板上部漏到推土铲后方，大大提高了填土、整平等作业效率。

Optimize the shape of the blade, make the bulldozing more efficient. With the unique design shape, the soil will not leak from the upper part of the blade to the rear of the bulldozing blade, which greatly improves the efficiency of filling and leveling.



性能提升，高效平土

Improve performance and level soil with high efficiency.

YC60-9提升动作协调性，标准操作可轻松完成平土距离超1500mm，新手轻松掌握，降低劳动强度。同等条件下906D\XE60D竞品平土距离不到800mm，在同行中优势显著。

YC60-9 improves the coordination of actions, and the standard operation can easily level over 1500mm, which is easy for novices to master and reduce the labor intensity. Under the same conditions, the leveling distance of 906D\XE60D competing products is less than 800mm. It has obvious advantages among peers.

双向滑动式座椅

Two-way Sliding Seat

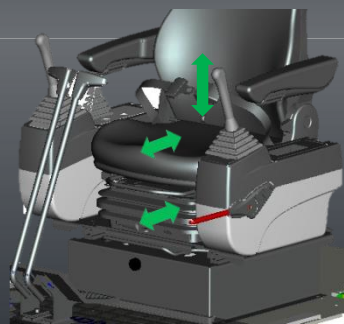
内饰经专业人体工学设计，手柄、开关布置合理，操作自然舒适，可有效减轻疲劳。

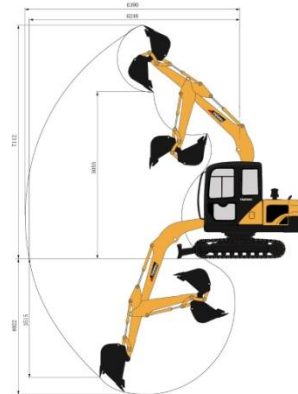
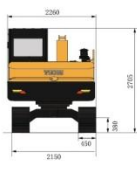
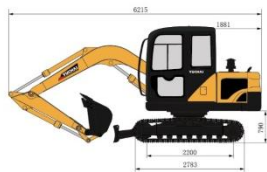
行业内名牌座椅，采用悬浮减震，可根据体重调节减震阻尼，可放倒超过135°。座椅、操纵箱位置可分别独立调节，可适应不同身材或坐姿。

The interior is designed by professional ergonomics, the handles and switches are arranged reasonably, and the operation is natural and comfortable, which can effectively reduce fatigue.

The famous seat in the industry, with suspension damping, can adjust damping according to body weight, and be laid down over 135°.

The position of the seat and the control box can be adjusted independently, which can adapt to different figures or sitting postures.





技术规格 Technical specifications	参数 Parameter	单位 Unit
基本参数 Basic parameter		
整机重量 Machine weight	7800	kg
标准斗容 Bucket capacity	0.26	m ³
性能参数 Performance parameter		
发动机 Engine model	洋马 YANMAR	
发动机额定功率 Engine power	44.4/2100	kW/rpm
爬坡能力 Max. Gradeability	35	°
斗杆最大挖掘力 Max. digging force of arm	38	kN
铲斗最大挖掘力 Max. digging force of bucket	56	kN
行驶速度 Traveling speed	2.6/3.9	km/h
平台回转速度 Slewing speed of platform	9~13	rpm
作业参数 Operating parameter		
最大挖掘高度 Max. digging height	7112	mm
最大挖掘深度 Max. digging depth	4022	mm
最大挖掘半径 Max. digging radius	6390	mm
最大地面挖掘半径 Max. digging radius on ground level	6248	mm
最大卸载高度 Max. dumping height	5055	mm
最小回转半径 Min. slewing radius	1881	mm
最大垂直挖深 Max. vertical digging depth	3515	mm
运输尺寸 Transportation dimension		
总长 (运输状态) Overall length	6215	mm
总宽 (运输状态) Overall width	2260	mm
总高 (运输状态) Overall height	2705	mm
其他参数 Other Parameter		
履带宽度 Width of undercarriage	2150	mm
履带长度 Length of track	2783	mm
最小离地间隙 Height between undercarriage and ground	380	mm
平衡重离地高度 Height between platform and ground	790	mm
尾部回转半径 Platform tail turning radius	1881	mm
燃油箱容量 Fuel tank capacity	151	L
液压油箱容量 Hydraulic oil tank capacity	125	L