



YC215-9

整机重量: 22300 kg

斗容: 0.9~1.1 m³

Working weight: 22300 kg

Bucket capacity: 0.9~1.1 m³

产品介绍
Product introduction

强劲的玉柴发动机 Powerful Yuchai Engine

YC215-9搭载玉柴自主研发的发动机，扭矩强劲，动力储备充足，油耗低，响应快，更优的燃油效率。

YC215-9 is equipped with an engine independently developed by Yuchai, which has strong torque, sufficient power reserve, low fuel consumption, fast response and better fuel efficiency.

国际品牌液压系统 International Brand Hydraulic System

复合动作的调性顺畅
液压阀稳定高效，可靠性高
The tonality of compound movements is smooth.
The hydraulic valve is stable, efficient and reliable.

The tonality of compound movements is smooth.
The hydraulic valve is stable, efficient and reliable.

高强度驾驶室 High Strength Cab

驾驶室结构梁加粗、加大，驾驶室强度大大提升，可靠防止落物、侧倾伤害，驾驶员更安全。
The structural beam of the cab is thickened and enlarged, which greatly improves the strength of the cab, reliably prevents falling objects and rolling injuries, and makes the driver safer.



YC215-9

玉柴重工22 ton中型挖掘机

Yuchai Heavy Industry 22 ton Medium Excavator

YC215为玉柴重工新一代中型液压挖掘机，整机吨位适中，专利智能控制系统轻松应对多种工况；专有玉柴动力完美匹配，低油耗高效率；新配置的驾驶室提供了舒适的操作体验。

YC215 is a new generation medium-sized hydraulic excavator of Yuchai Heavy Industry, with moderate tonnage, and its patented intelligent control system can easily cope with various working conditions. Proprietary Yuchai power perfectly matches, with low fuel consumption and high efficiency; The new cab provides a comfortable operating experience.



玉柴小挖 YUCHAI Mini Excavator. 响彻世界的挖掘机品牌 The world's most famous excavator brand

玉柴重工成立于1989年，是中国最早生产微挖并销往全球的挖掘机企业，是中国国内最大的小型挖掘机生产、出口基地，国家级高新技术企业。三十多年创新发展，给客户高品质保证！

YUCHAI Heavy Industry Co. Ltd., founded in 1989, is the first enterprise of excavators in China to produce mini-excavators and sell them to the world. As China's largest state-level high-tech enterprise, it is also a producing and exporting base of small excavators.

More than 30 years of innovation and development to ensure high-quality customers!



同级别最强挖掘力

The strongest excavation force at the same level

YC215-9最大牵引力195kN，具备优秀的吊装能力，能够轻松吊起重物，铲斗最大挖掘力150kN，铲斗斗容0.9m³，挖土工作非常高效

YC215-9 has a maximum traction force of 195kN, excellent hoisting capacity, and easily lift heavy objects. The maximum digging force of the bucket is 150kN, and the bucket capacity is 0.9 m³. The digging work is very efficiency.



全新驾驶室内饰 Brand New Cab Interior

内饰符合人体工程学设计，手柄、开关布置合理，操作自然舒适，可有效减轻疲劳。

行业内名牌座椅，采用悬浮减震，可根据体重调节减震阻尼，可放倒超过135°。

The interior is ergonomically designed, the handles and switches are arranged reasonably, and the operation is natural and comfortable, which can effectively reduce fatigue.

The famous seat in the industry, with suspension damping, can adjust damping according to body weight, and can be laid down over 135°.

全先导操纵 Full pilot control

驾驶体验更舒适，挖掘机动作更流畅

The driving experience is more comfortable and the excavator action is more smooth



搭配1.1m³铲斗，挖掘迅速，平土效率高

With 1.1m³ bucket, it can dig quickly and level the soil with high efficiency.

YC215-9的操纵性能良好，先导装置能够让驾驶员轻松完成复杂的动作，减少长时间工作的疲惫，可选配0.9~1.1m³的铲斗，挖土效率高，同时也具有很好的平土效率。

YC215-9 has good handling performance. The pilot device can make the driver easily complete complex actions and reduce the fatigue of long-term work. A bucket of 0.9~1.1m³ can be selected, which has high digging efficiency and good leveling efficiency.



维护保养便利 Easy maintenance

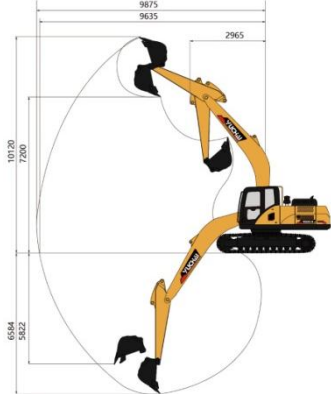
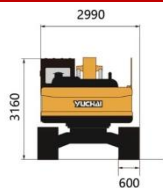
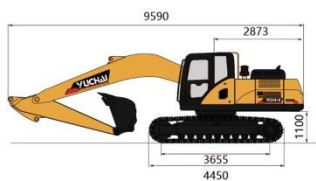
保留整体机罩的同时，增加了两扇可开启的侧门，三滤集中，触手可及，所有维护、检测点触手可及。

所有主液压胶管布置正对工作装置方向，提高了检测、维修的便利性

While the whole hood is kept, two openable side doors are added, and the three filters are centralized, so that all maintenance and inspection points are within reach.

All the main hydraulic hoses are arranged in the direction of the working device, which improves the convenience of detection and maintenance.





技术规格 Technical specifications	参数 Parameter	单位 Unit
基本参数 Basic parameter		
整机重量 Machine weight	22300	kg
标准斗容 Bucket capacity	0.9~1.1	m ³
性能参数 Performance parameter		
发动机 Engine model	玉柴 YUCHAI	
发动机额定功率 Engine power	140/2200	kW/rpm
爬坡能力 Max. Gradeability	35	°
斗杆最大挖掘力 Max. digging force of arm	109	kN
铲斗最大挖掘力 Max. digging force of bucket	150	kN
行驶速度 Traveling speed	3.2/5.0	km/h
平台回转速度 Slewing speed of platform	11~13	rpm
作业参数 Operating parameter		
最大挖掘高度 Max. digging height	10120	mm
最大挖掘深度 Max. digging depth	6584	mm
最大挖掘半径 Max. digging radius	9875	mm
最大地面挖掘半径 Max. digging radius on ground level	9635	mm
最大卸载高度 Max. dumping height	7200	mm
最小回转半径 Min. slewing radius	2965	mm
最大垂直挖深 Max. vertical digging depth	5822	mm
运输尺寸 Transportation dimension		
总长 (运输状态) Overall length	9590	mm
总宽 (运输状态) Overall width	2990	mm
总高 (运输状态) Overall height	3160	mm
其他参数 Other Parameter		
履带宽度 Width of undercarriage	2990	mm
履带长度 Length of track	4550	mm
最小离地间隙 Height between undercarriage and ground	470	mm
平衡重离地高度 Height between platform and ground	1100	mm
尾部回转半径 Platform tail turning radius	2873	mm
燃油箱容量 Fuel tank capacity	430	L
液压油箱容量 Hydraulic oil tank capacity	150	L