

# PCB High Speed Pin Insertion Machine

Professional Provider of Manufacturing Solutions



## Suzhou, China

ADD: No.32, Tingtao Road, SIP, Suzhou, Jiangsu Province  
Tel: +86-400-0909-665

## Fankfurt,Germany

ADD: Paul-Ehrlich- Strasse 1b 63225 Langen (Hessen) Germany  
Tel: +49 6103 988 2462

## Tangier, Morocco

ADD: Zone franche d' exportation de tanger lot 81 A7, Tangier, Morocco  
Tel: +212 663649938

## Leon, Mexico

ADD: Calle Benjui #179 Col.Soberna, en esta Ciudad de Leon, Guanajuato, Mexico  
Tel: +52 5513771917

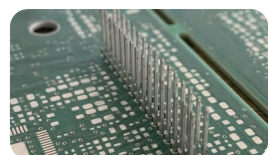


Suzhou Harmontronics  
Automation Technology Co., Ltd.

Suzhou Harmontronics Automation Technology Co., Ltd.

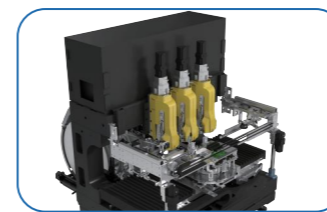
Stock Code: 688022

# PA350 Pin Insertion Machine



High speed, built for high-volume production;

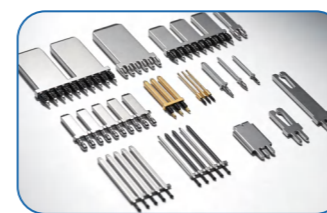
High compatibility, capable of inserting various pins.



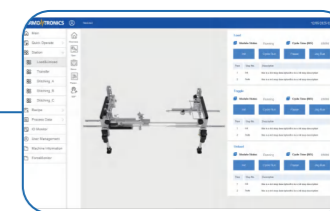
**01 Marble Base**  
Reduce vibration interference and ensures machine stability.



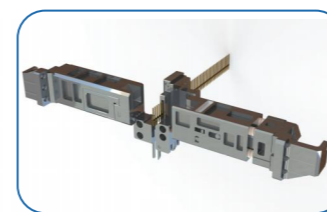
**02 High Insertion Speed**  
Improve overall production efficiency of the machine, 6 strokes/s.



**03 High Compatibility**  
Capable of inserting different types of terminals, such as bridges, forks, and L-shaped pins.



**04 Efficient and User-Friendly Human-Machine Interface**  
Reduce learning, training, and operational costs.



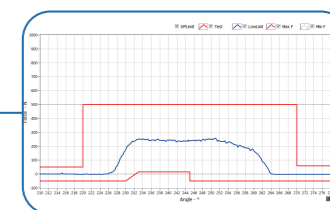
**05 Quick Changeover**  
Quick changeover to enhance production efficiency.



**06 High Flexibility**  
Support equipment upgrades, providing convenience for reasonable investment.



**07 High Precision**  
Camera-guided calculation of insertion positions.



**08 Force Monitoring**  
Force monitoring to ensure insertion quality(Pallet method).

# PA400 Pin Insertion Machine



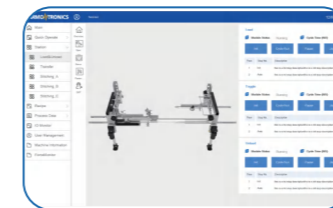
Cost-effective, meet the most production scenarios requirement.



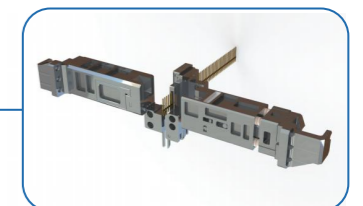
**01 High Insertion Speed**  
Operates at >180 strokes per minute with the capacity of inserting 3 pins per stroke.



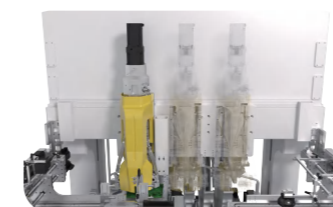
**02 High Compatibility**  
Capable of inserting different types of terminals, such as bridges, forks, and L-shaped pins.



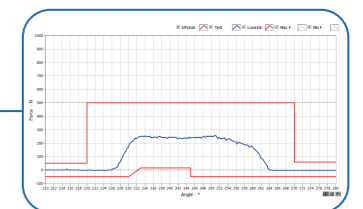
**03 Efficient and User-Friendly Human-Machine Interface**  
Reduce learning, training, and operational costs.



**04 Quick Changeover**  
Quick changeover to enhance production efficiency.



**05 High Flexibility**  
Support equipment upgrades, providing convenience for reasonable investment.



**06 Force Monitoring**  
Force monitoring to ensure insertion quality (Anvil method).

# Specification



PCB size	PA350	PA400
X*Y	80mm*80mm—400mm*350mm	80mm*80mm—400mm*350mm
Thickness	≤4mm	≤4mm
Machine size	PA350	PA400
Length	1800mm	1800mm
Width	2800mm	2800mm
Height	2100mm	1850mm
Machine base	PA350	PA400
Base material	Marble Base	Steel Base
Machine weight	PA350	PA400
Weight	3500kg	1600kg
Basic parameters	PA350	PA400
Max insertion area	340mm*390mm	340mm*390mm
Conveyor height	900±30mm	900±30mm
Conveyor direction	From left to right	From left to right
Max different family terminals	3	3
Voltage	3x380V+N+PE	3x380V+N+PE
Pressure	4~6Bar	4~6Bar
Frequency	50Hz	50Hz

Operating temperature	10°C~30°C	10°C~30°C
Noise	<75dB	<78dB
Stitching head	1, 2 or 3	1, 2 or 3
PCB supporting method	Pallet	Anvil
Insertion stroke	45mm or 60mm	45mm or 60mm
Reel feeder diameter	500mm—800mm	500mm—800mm
Reel feeder number(Each head)	1 or 2	1 or 2
Functional parameters	PA350	PA400
Insertion angle	0~360°	0°, 90°, 180°, 270°
PCB thickness measurement	Yes	Yes
Insertion mode	1, 2 or 3	1, 2 or 3
Insertion rate	6 strokes/s	3 strokes/s
Force monitoring	Optional	Optional
PCB QR code scan	Optional	Optional
Pin lost and repair mode	Optional	Optional
Conveyor width adjustment	Automatic	Automatic
PCB position check	Optional	Optional
Terminal raw material check	Optional	Optional
SMEMA protocol, MES function	Yes	Yes