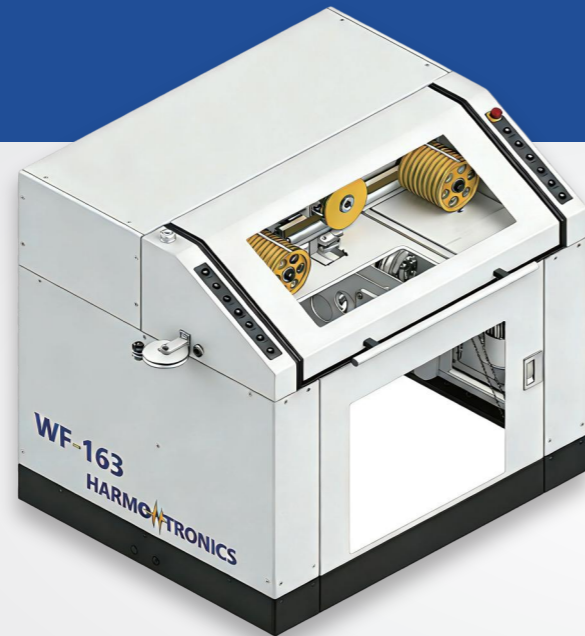


WF-163

Automatic Wire Pre-feeding Machine



- The WF-163 can handle reels weighing up to 400 kg and wires with a diameter of 1-6 mm. With a maximum wire feeding speed of 3 m/s, its design allows for easy adaptation to reels of different sizes.

CS-001 SERIES

Coaxial Cable Stripper



- CS-001 Coaxial Cable Stripper can strip coaxial cables with diameters ranging from 1 to 8 mm without the need to replace blades or fixtures. It not only supports customized solution for cable requirements but also offers customized model to adapt to large-scale automation equipment.

Equipment Parameters

Reel Diameter	400 - 800 mm	Wire Diameter	1-6 mm
Reel Width	≤660 mm	Dimensions (L × W × H)	1,440 x 1,190 x 1,420 mm
Maximum Reel Weight	400 kg	Power Source	220 V/AC 50/60 HZ
Wire Outlet Height	1069 mm	Air Pressure	0.5-0.7Mpa
Maximum Wire Feeding Speed	3m/s	Weight	750 kg

Equipment Parameters

Wire Diameter	1-8 mm	Dimensions (L × W × H)	130 x 520x 420 mm
Maximum Stripping Length	≤40 mm	Power Source	220 V/AC 50/60 HZ
Stripping Accuracy	0.1mm	Air Pressure	0.5-0.7Mpa
Noise	<65dB	Weight	15 kg

CM-2 SERIES

Crimping Machine

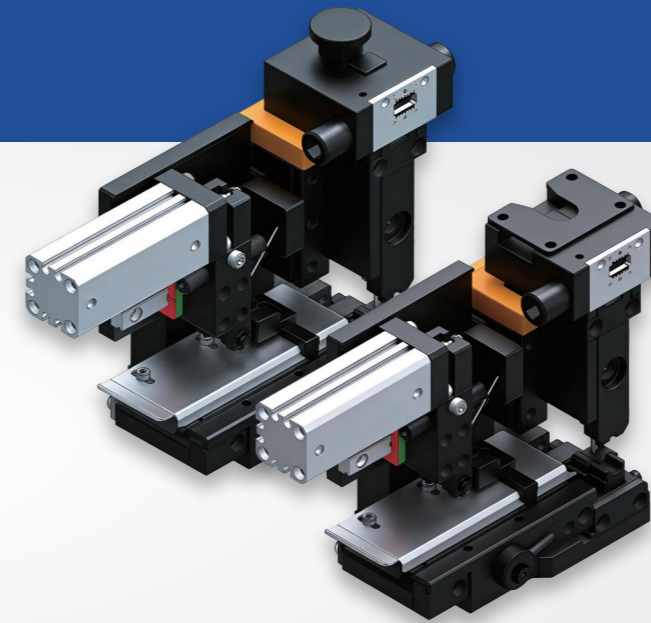
- The CM-2 Series delivers a crimping force of 20 KN (2 T). The full series offers crimping machines with different driving methods and die heights, compatible with common mechanical or pneumatic crimping tools, and equipped with interfaces for various pressure monitoring systems.



CA SERIES

Crimping Applicator

- The CA series are horizontal pneumatic feeding crimping applicators for crimping dies, perfectly compatible with standard wire harness crimping machines. Customized tools can be easily installed to crimp different types of products.



Equipment Parameters

Model	CM-240E	CM-240SE	CM-230J	CM-230SJ
Dimension (LxWxH)	205 x 452 x 560 mm			
Maximum Crimping Force	20 KN			
Stroke	40 mm		30 mm	
Shut Height	135.78mm		119.7mm	
Drive Type	AC Motor	Servo Motor	AC Motor	Servo Motor
Power	220 V/AC 50/60 HZ			
Noise	<65dB			
Weight	100 kg			

Equipment Parameters

Model	CA-40AE	CA-30AJ
Dimension (LxW)	205 x 103 mm	
Shut Height	135.78mm	119.7mm
Feeding Method	Horizontal Pneumatic Feeding	
Feeding Distance	Max. 40 mm	
Adjustable Height	0.2-20mm	
Weight	5 kg	