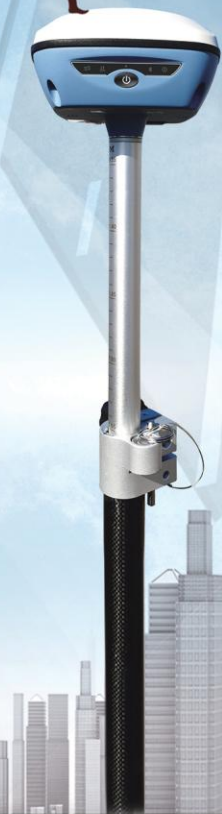
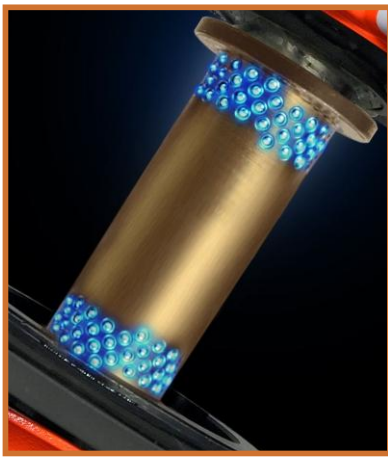


GINTEC

Surpad 4.2





Bead type vertical shaft system

The vertical shaft adopts 180 rolling steel balls without clearance, which ensures the accuracy of horizontal Angle, reduces shaft failure rate and maintenance cost.



Precision microstructure

The 0.25mm pitch micromotion system can easily lock the target in the range of 1", ensuring the aiming accuracy.



New five-axis ranging light path

New type of internal and external light path switching device, five-axis ranging light path, sufficient isolation is the emission and reflection, avoid mutual interference signal, improve the ranging accuracy.



Integrated horizontal shafting

Integrated horizontal axis system improves geometric accuracy and ensure vertical Angle accuracy.

$2'' \pm 2 \text{ppm}$



Angle measurement: Single code coding four probe sampling

Single code coding four probe sampling Angle measuring technology, reduce dial eccentricity and marking error, accurate Angle data acquisition.

No initialization is

required when booting, and health information is automatically maintained after unexpected power outages.

Liquid reflex biaxial electronic compensator

Adopts the reflecting type of liquid biaxial electronic compensator, over the old silicon photocell compensator, the compensation accuracy is higher, stronger circumferential stability.

Not affected by temperature, can resist extremely hot or severely cold.



SPECIFICATIONS

• Angle Measurement

Measurement Method	Absolute Encoding
Circle Diameter	79mm
Minimum Readout	0.1"/1"/5"/10"
Accuracy ^{*1}	2"

• Telescope

Magnification	30X
Image	Erect
Tube Length	154mm
Effective Aperture	45mm (EDM:50MM)
Field of View	1°30'
Minimum Focus Distance	1.4m
Resolving Power	3'

• Dual-axis Compensator

Working Range	±3'
Accuracy	1"

• Distance Measurement (Good Conditions)^{*2}

Measurement Range	Single Prism	5000m
	Reflective Sheet	800m
	Reflectorless ^{*3}	800m
Accuracy	Single Prism	2mm+2ppm
	Reflective Sheet	2mm+2ppm
	Reflectorless ^{*3}	Fine(< 200m): 3mm+2ppm
		Fine(> 200m): 5mm+2ppm
		Tracking: 10mm+2ppm
Measuring Time	Single Prism	< 0.3s
	Reflective Sheet	< 0.3s
	Reflectorless ^{*3}	Typ. 0.3-3s max. 10s

• Communication

Internal Data Memory	Approx. 120000Points/SD Card(max.8G)
Serial I/F port	USB Port/Bluetooth/SD Card

• Plummet

Laser plummet ^{*4}	±1.5mm at 1.5m
Optical Plummet (Optional)	Erect Image
Magnification	3X
Focusing Range	0.5m~∞
Field of View	5°

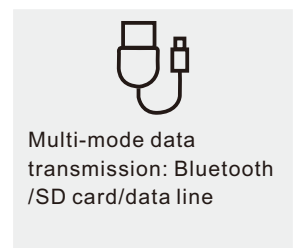
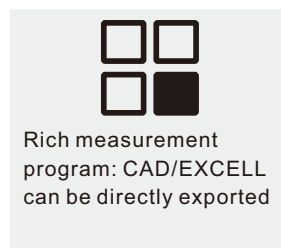
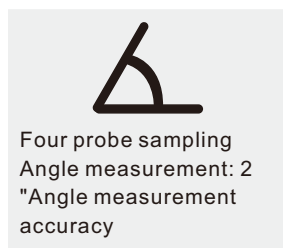
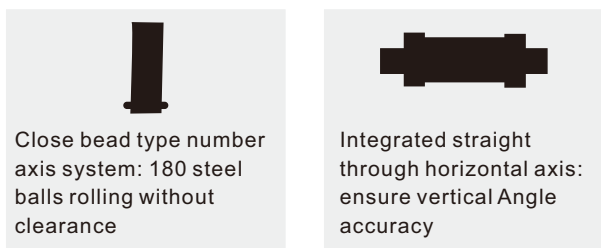
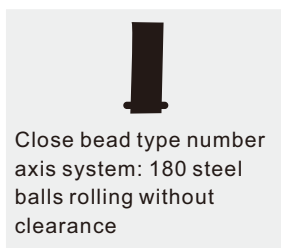
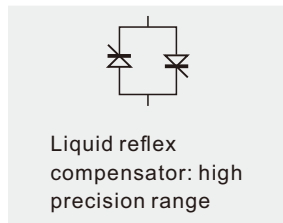
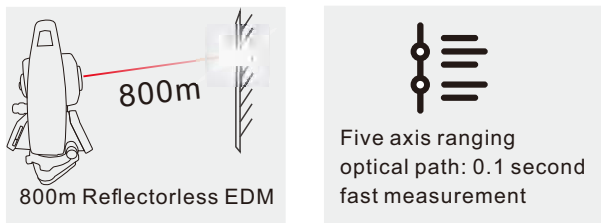
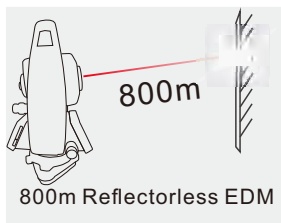
• Power

Battery Type	Rechargeable Lithium battery
Voltage/Capacity	7.4V(DC)/ 3100mAh
Operating Time	8 Hours ^{*5}

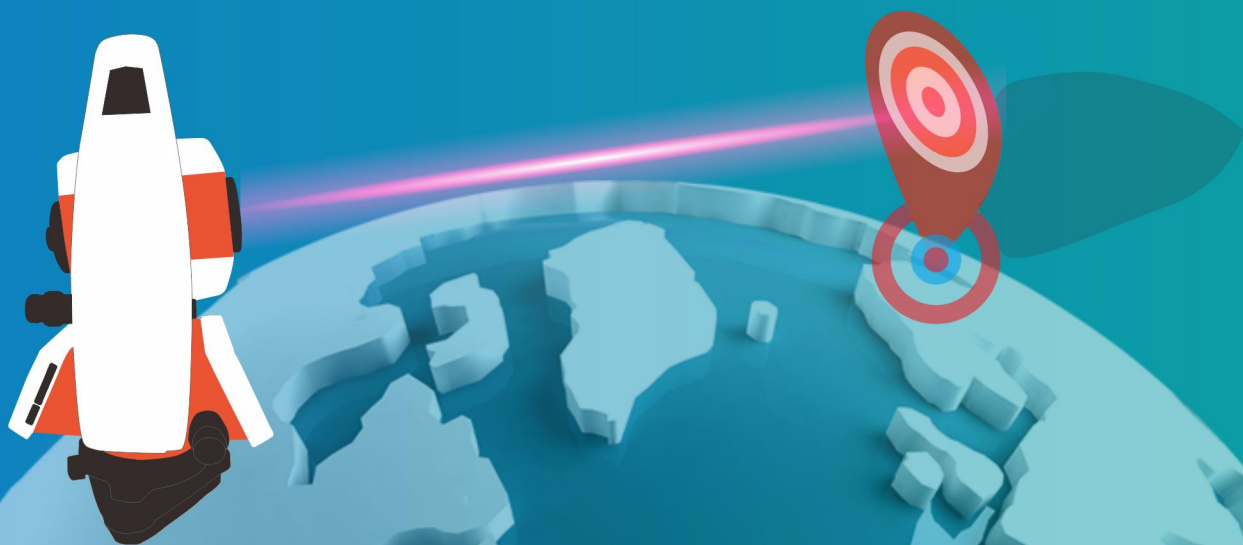
• Others

Hours	IP65(IEC60529 Standard)
Display	Dual side, LCD 6 Lines
Keyboard	Dual sides Alphanumeric Keyboard
Operating Temperature	-20°C~+50°C
Weight (including battery)	5.2kg
Dimensions (W*D*H)	160*150*330mm

- ◆ 1. Standard deviation based on ISO17123-3.
- ◆ 2. Good conditions: no haze, visibility about 40 km, no heat shimmer, breeze.
- ◆ 3. Reflector: White side of Kodak Gray Card with 90% reflective.
- ◆ 4. Laser plummet mounted on the bottom of the vertical axis.
- ◆ 5. Battery life specification at 25°C. It might be shorter in low temperature or if the battery is old



GINTEC



GUANGZHOU GEOSURV INFORMATION TECHNOLOGY CO., LTD.

ADD: 1101E, F Building B, NO.9 CaiPin Road, Science City, HuangPu District, GuangZhou

TEL: 8620-82514956

FAX: 8620-82274707

Website: www.gintec.cn

Email: overseas@gintec.cn